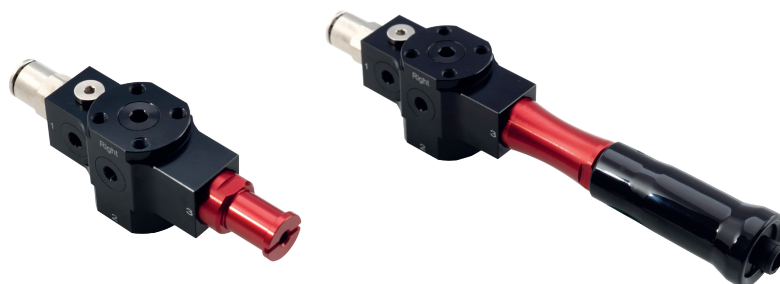




# Vacuum generation | Inline ejectors

FGS – Heavy-duty Inline vacuum ejectors

## FGS – Heavy-duty Inline vacuum ejectors



### Product notes

- > Direct mounting for vacuum cups with G3/8 fitting
- > Lightweight and robust aluminum body
- > Operated by switching the compressed air supply on/off
- > Choose from different options depending on supply pressure, vacuum level, vacuum flow and efficiency required
- > Options with and without silencer available
- > Includes 6 mm push-in fitting and screws

### Technical data

Item no.	Silencer	Optimal operating pressure [bar (psi)]	Optimal suction power [NI/min]	Optimal air consumption [NI/min]	Operating pressure [bar (psi)]	Max. suction power [NI/min]	Max. air consumption [NI/min]	Final vacuum [%]	Weight [g]
FGS-N-S08-2	not included	5 (72.5)	46	23	4 - 6 (58 - 87)	46	27	75	61
FGS-N-S08-2-S	included	5 (72.5)	46	23	4 - 6 (58 - 87)	46	27	75	70
FGS-N-S08-3	not included	5 (72.5)	66	23	4 - 6 (58 - 87)	68	27	75	65
FGS-N-S08-3-S	included	5 (72.5)	66	23	4 - 6 (58 - 87)	68	27	75	74
FGS-N-P12-2	not included	3.1 (45)	42	29	1.7 - 4 (24.7 - 58)	42	35	90	61
FGS-N-P12-2-S	included	3.1 (45)	42	29	1.7 - 4 (24.7 - 58)	42	35	90	70
FGS-N-P12-3	not included	3.1 (45)	62	29	1.7 - 4 (24.7 - 58)	68	35	90	65
FGS-N-P12-3-S	included	3.1 (45)	62	29	1.7 - 4 (24.7 - 58)	68	35	90	74

### Model selection

#### Ordering example:

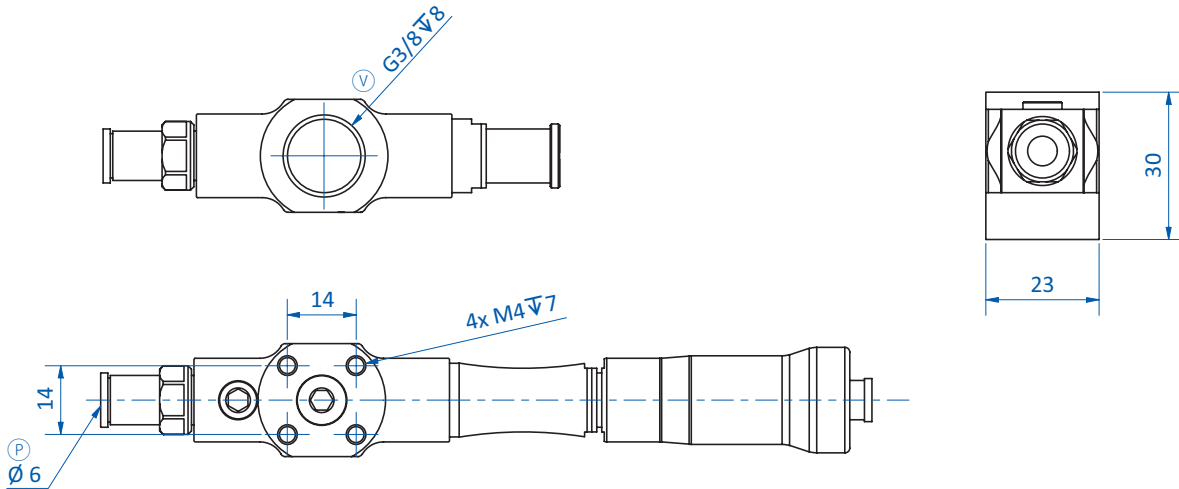
FGS-N-S08-2 = 46 NI/min, low air consumption, without silencer

FGS-N-P12-3-S = 68 NI/min, low operating pressure, with silencer

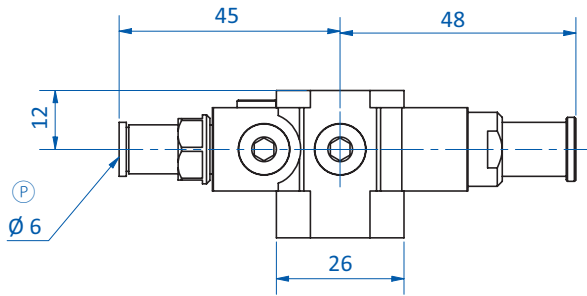
Series	Design	Silencer
FGS-N	S08-2 = 46 [NI/min] low air consumption	-S (with) <i>blank</i> (without)
	S08-3 = 68 [NI/min] low air consumption	
	P12-2 = 42 [NI/min] low operating pressure	
	P12-3 = 68 [NI/min] low operating pressure	



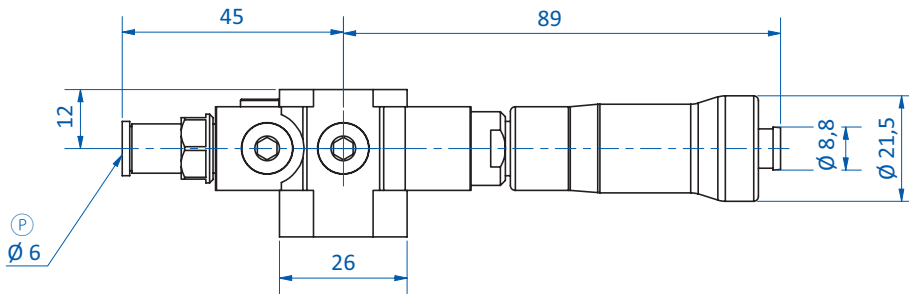
### Dimensions



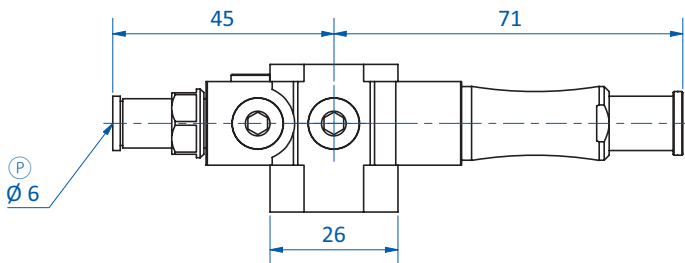
FGS-N-S08-2 | FGS-N-S08-2-S | FGS-N-S08-3 | FGS-N-S08-3-S | FGS-N-P12-2 | FGS-N-P12-2-S | FGS-N-P12-3 | FGS-N-P12-3-S



FGS-N-S08-2 | FGS-N-P12-2



FGS-N-S08-2-S | FGS-N-P12-2-S



FGS-N-S08-3 | FGS-N-P12-3

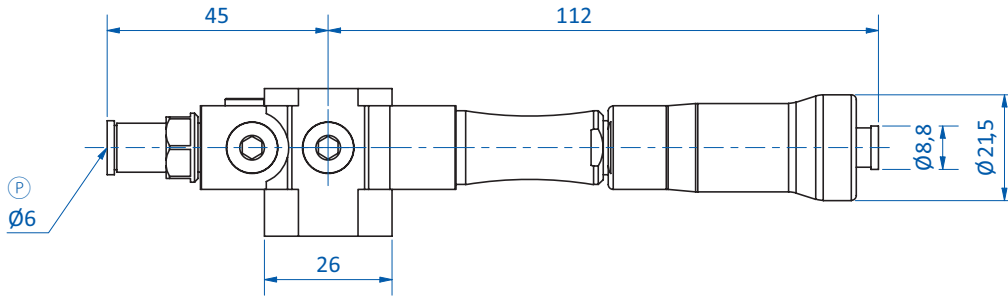
Ⓟ = Compressed air connection    Ⓥ = Vacuum connection



# Vacuum generation | Inline ejectors

FGS – Heavy-duty Inline vacuum ejectors

## Dimensions

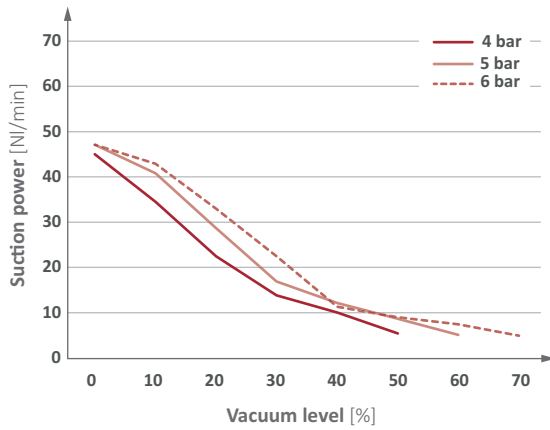


FGS-N-S08-3-S | FGS-N-P12-3-S

Ⓟ = Compressed air connection    Ⓥ = Vacuum connection

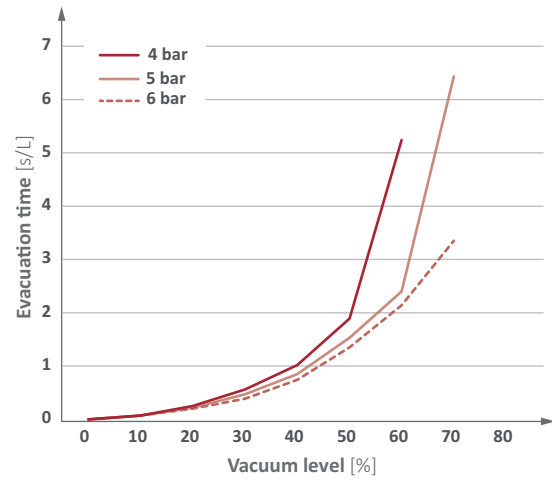
## Diagrams

> Suction power against vacuum level [NI/min]



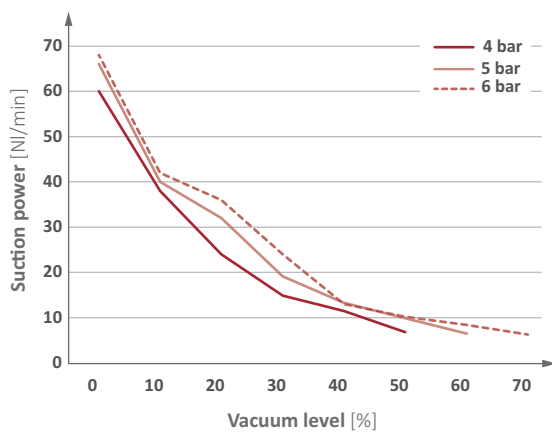
FGS-N-S08-2 | FGS-N-S08-2-S

> Evacuation time against vacuum level [s/L]



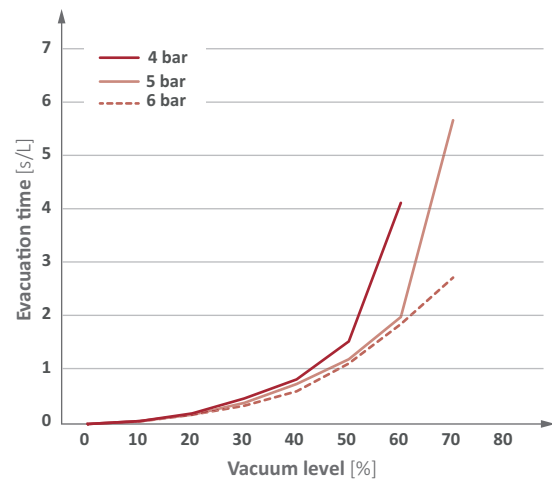
FGS-N-S08-2 | FGS-N-S08-2-S

> Suction power against vacuum level [NI/min]



FGS-N-S08-3 | FGS-N-S08-3-S

> Evacuation time against vacuum level [s/L]

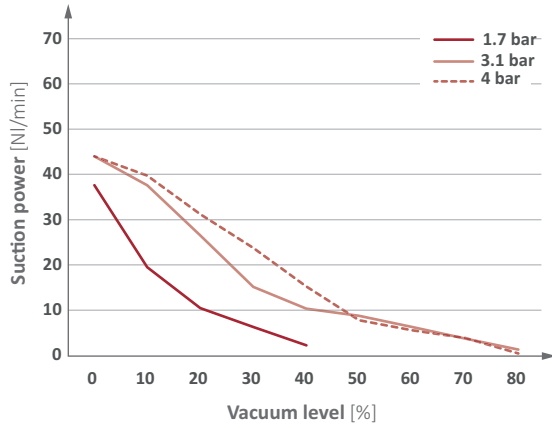


FGS-N-S08-3 | FGS-N-S08-3-S



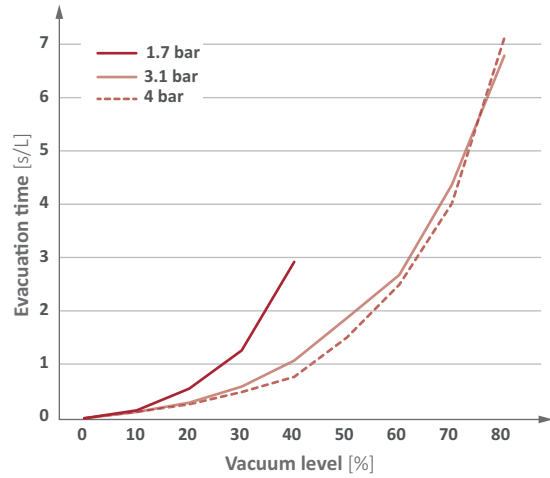
### Diagrams

> Suction power against vacuum level [NI/min]



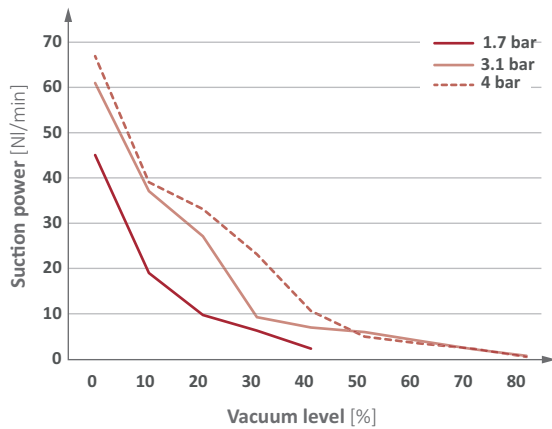
FGS-N-P12-2 | FGS-N-P12-2-S

> Evacuation time against vacuum level [s/L]



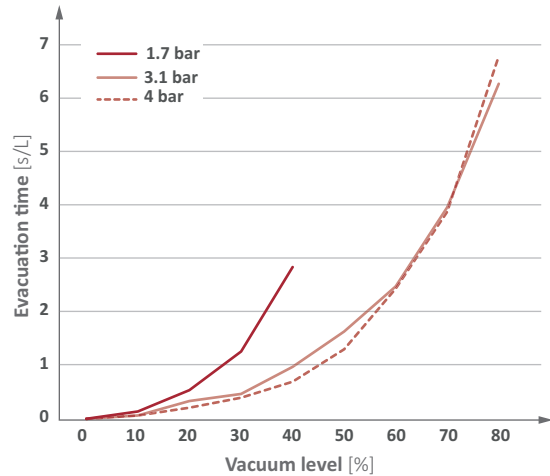
FGS-N-P12-2 | FGS-N-P12-2-S

> Suction power against vacuum level [NI/min]



FGS-N-P12-3 | FGS-N-P12-3-S

> Evacuation time against vacuum level [s/L]



FGS-N-P12-3 | FGS-N-P12-3-S