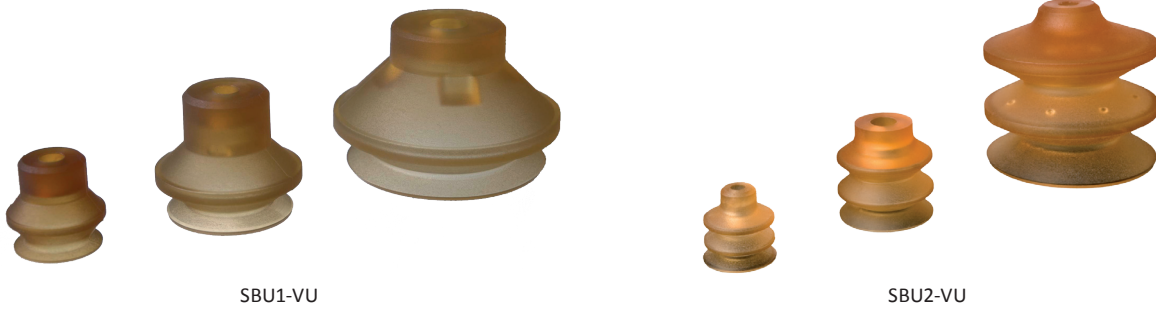




Vulkollan® bellows cups, universal, 1.5 to 2.5 folds – SBU-VU



SBU1-VU

SBU2-VU




Product notes

Extremely robust universal bellows vacuum cups, material made from Vulkollan®

Advantage

- > Minimal abrasion
- > Very long life cycle
- > Very good resetting, enabling fast cycle times
- > Bellows compensate differences in height and enable good adaptation to curved or uneven product surfaces
- > Cost-effective replacement of worn seals

Technical data

Item no.	Model / Lip dimensions		Number of folds	Material / Color
	Bellows vacuum cups, 1.5 folds – SBU1-VU			
23.020.169.11	SBU1-VU-20	7	1.5	Vulkollan® (br)
23.030.170.11	SBU1-VU-30	8	1.5	Vulkollan® (br)
23.050.171.11	SBU1-VU-50	10	1.5	Vulkollan® (br)
	Bellows vacuum cups, 2.5 folds – SBU2-VU			
21.009.106.11	SBU2-VU-9	2	2.5	Vulkollan® (br)
21.020.090.11	SBU2-VU-20	8	2.5	Vulkollan® (br)
21.032.091.11	SBU2-VU-30	16	2.5	Vulkollan® (br)
21.030.076.11	SBU2-VU-31	14	2.5	Vulkollan® (br)
21.051.097.11	SBU2-VU-50	18	2.5	Vulkollan® (br)
21.062.092.11	SBU2-VU-60	25	2.5	Vulkollan® (br)



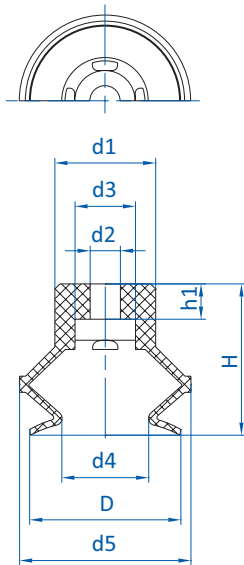
Series | Bellows vacuum cups SB

Vulkollan® bellows cups, universal, 1.5 to 2.5 folds – SBU-VU

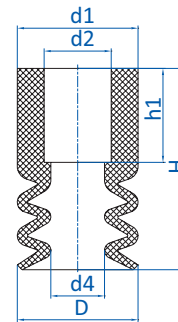
Accessories

Item no.	Suitable fittings							
	M5-male	M5-female	M6-male	M8-male	G1/8-male	G1/8-female	G1/4-male	G1/4-female
Bellows vacuum cups, 1.5 folds – SBU1-VU								
23.020.169.11	--	--	270.312/19	--	270.482	270.481	270.483	270.484
23.030.170.11	--	--	270.312/19	--	270.482	270.481	270.483	270.484
23.050.171.11	--	--	270.314	--	270.490	270.489	270.491	270.492
Bellows vacuum cups, 2.5 folds – SBU2-VU								
21.009.106.11	270.013	270.005	270.103	--	270.003	270.015	--	--
21.020.090.11	270.024	--	270.104	--	270.033	270.478	--	--
21.032.091.11	--	--	270.315	--	270.132	270.114	270.190, 270.540	270.192, 270.539
21.030.076.11	--	--	--	270.255	270.486	270.485	270.487	270.488
21.051.097.11	--	--	--	--	270.132	270.114	270.204	270.324
21.062.092.11	--	--	270.315	--	--	--	270.540	270.539

Dimensions



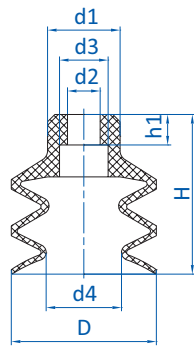
Drawing A



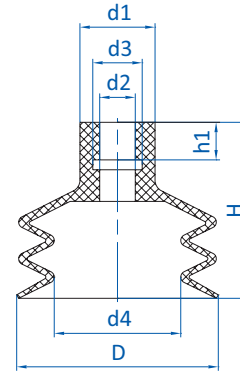
Drawing B



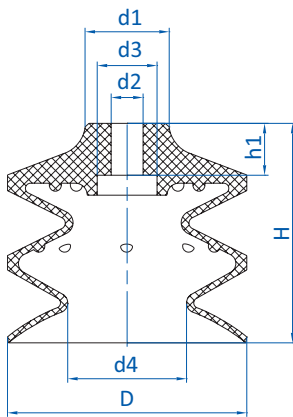
Dimensions



Drawing C



Drawing D



Drawing E

Item no.	Drawing	Ø D [mm]	Ø d1 [mm]	Ø d2 [mm]	Ø d3 [mm]	Ø d4 [mm]	Ø d5 [mm]	H [mm]	h1 [mm]
Bellows vacuum cups, 1.5 folds – SBU1-VU									
23.020.169.11	A	20	15	6	12	12.5	22	22	7
23.030.170.11	A	30	20	6	12	17	34	30	7
23.050.171.11	A	50	29	9	20	31	56	37	7
Bellows vacuum cups, 2.5 folds – SBU2-VU									
21.009.106.11	B	9	9	5.5	--	4	--	15	7
21.020.090.11	C	20	10	4.5	6.5	10.5	--	22	4.2
21.032.091.11	C	30	18	8	15	17	--	38	13
21.030.076.11	C	31	18.5	8	15	19.5	--	29	7
21.051.097.11	D	51	19	9	12.5	32	--	45	9.5
21.062.092.11	E	60	21	8	15	30	--	55	13