



Closed silencers for ejectors



Product notes

- > Closed diffusor/silencer specially designed for dust-free environments
- > Suitable for heavy-duty ejectors

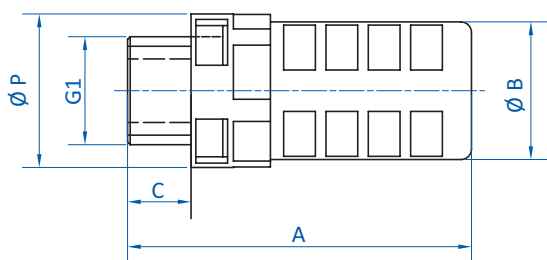
Technical data

Item no.	Weight [g]
72.000	2
72.001	3.5
72.002	12
72.003	15
72.007	5.5
72.008	3
72.009	6.5

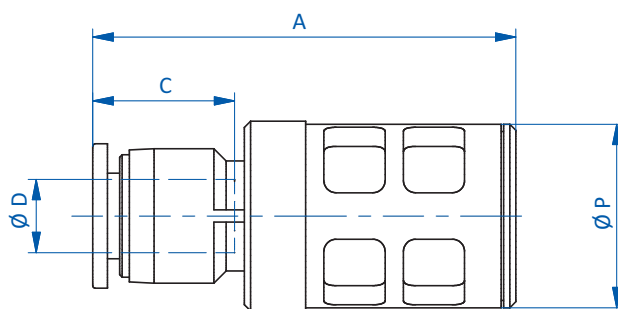
Dimensions

G1	Ø D [mm]	A [mm]	Ø B [mm]	C [mm]	Ø P [mm]
G1/8	--	28	15.5	6	15.5
G1/4	--	38	17.5	8	17.5
G3/8	--	58	26	10	26.5
G1/2	--	66	29	12	29
--	4	30	--	11	10.5
--	6	34.5	--	11.5	15.5
--	8	48.5	--	17.5	17.5

Dimensions



72.000 | 72.001 | 72.002 | 72.003



72.007 | 72.008 | 72.009