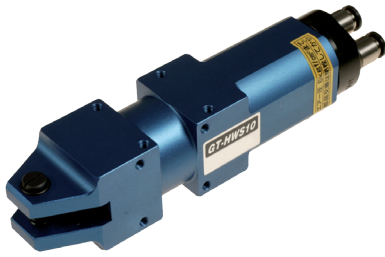




Air shears – round/square, double-acting



FOR FAST CYCLE TIMES

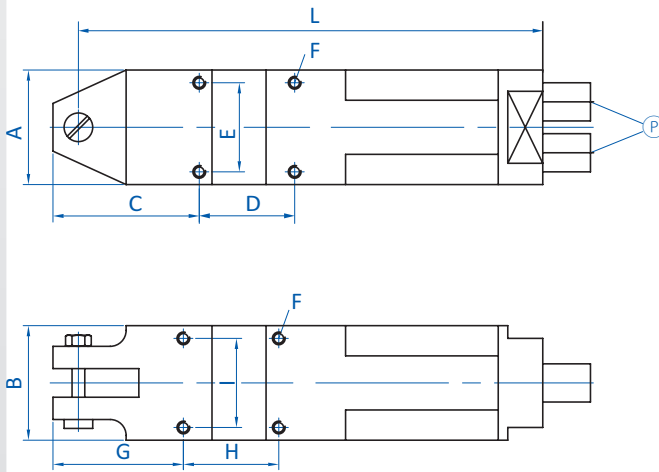
Product notes

- > Pneumatic shears for robots, cutting stations or manual operation
- > Cutting of paper, film, steel or copper wire, etc.
- > Double-acting, separate control of opening and closing to enable short duty cycles
- > Continuous cutting process as no return spring required
- > Blades are not included in the scope of delivery. Please order separately.

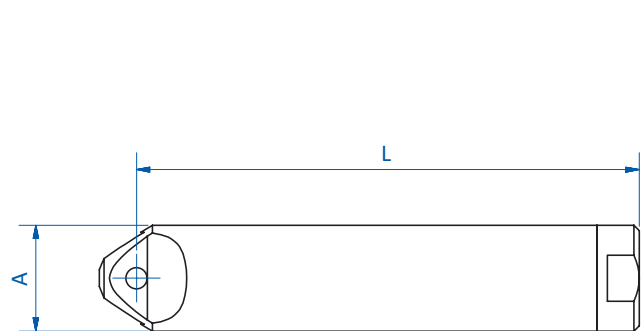
Technical data

Item no.	Housing	Max. cutting force [N]	Air consumption [cm ³ /stroke]	Operating pressure [bar (psi)]	Pipe connection [mm]	Weight [g]
GT-HWS1	Square	294	45	4 - 5 (58 - 72.5)	4	116
GT-HWR1	Round	294	45	4 - 5 (58 - 72.5)	4	84
GT-HWS10	Square	588	116	4 - 5 (58 - 72.5)	6	356
GT-HWR10	Round	588	116	4 - 5 (58 - 72.5)	6	295

Dimensions



GT-HWS1 | GT-HWS10



GT-HWR1 | GT-HWR10

Ⓟ = Compressed air connection

Item no.	A [mm]	B [mm]	C [mm]	D [mm]	E [mm]	F	G [mm]	H [mm]	I [mm]	L [mm]
GT-HWS1	20	23	--	--	--	M3	24	40	16	95
GT-HWR1	20	--	--	--	--	--	--	--	--	95
GT-HWS10	36	36	45.5	30	28	M4	41	30	28	146
GT-HWR10	36	--	--	--	--	--	--	--	--	146



Nipper technology | Air shears

Blades for double-acting air shears

Blades for double-acting air shears



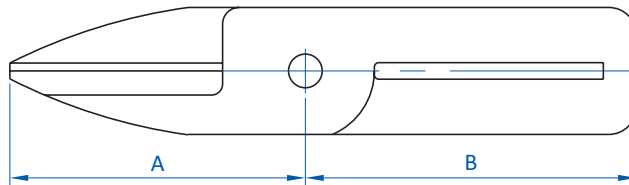
Product notes

- > Blades for double-acting air shears
- > Suitable for cutting copper or steel wire

Technical data

Item no.	Max. opening for cutting [mm]	Effective cutting length [mm]	Max. cutting thickness [mm]		Weight [g]	Air nippers
			Copper wire	Steel wire		
HW1J	3	17	1	0.5	116	GT-HWR1 GT-HWS1
HW10J	5	28	1.8	1.2	84	GT-HWR10 GT-HWS10

Dimensions



Item no.	A [mm]	B [mm]
HW1J	25	30
HW10J	40	55