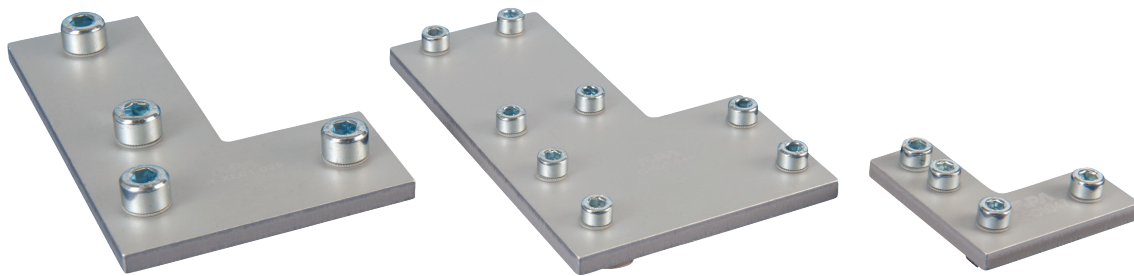




Flat connectors – L-form



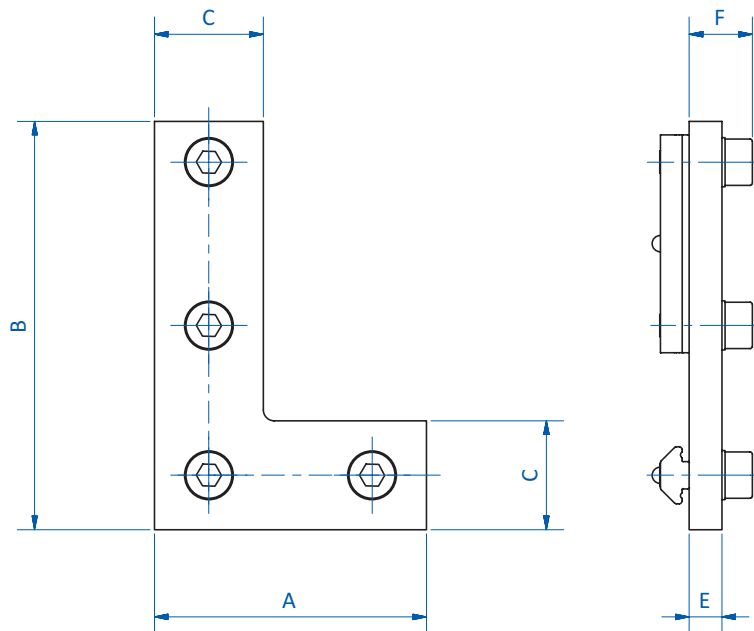
Product notes

> For rigid connection of two profiles at 90°

Technical data

Item no.	Suitable for extrusion system	Width profile 1 [mm]	Width profile 2 [mm]	Material	Weight [g]
GR01.046	SLine, MLine	20 - 25	20 - 25	Aluminum	66
GR01.047	SLine, MLine	20 - 25	20 - 25	Aluminum	53
GR01.048	MLine	50	50	Aluminum	213
GR01.214	JLine	40	40	Steel	199
GR-XL01.029	XLine	40	40	Aluminum	260

Dimensions



Item no.	A [mm]	B [mm]	C [mm]	E [mm]	F [mm]
GR01.046	50	75	20	3	9
GR01.047	50	50	20	3	9
GR01.048	70	120	50	3	9
GR01.214	75	115	40	3	9.7
GR-XL01.029	80	120	40	3	12