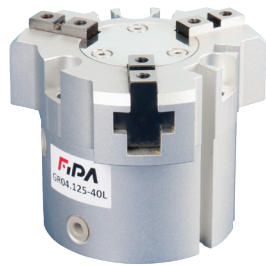




3-finger grippers for large strokes



Product notes

- > Grippers with stroke more than double of GR04.125 at same gripping force
- > Compact and flat design
- > Double-acting for inside/outside gripping and short duty cycles
- > Body made of high-strength aluminum alloy, jaws are steel
- > Sensors for monitoring gripper action via piston position optionally available
- > Medium: filtered and oiled/unoiled air
- > PNP and NPN sensors:
 - C-slot (straight) GR04.125-16L, GR04.125-25L: for sensors GR04.198, GR04.198/NPN
 - C-slot (90° angle) GR04.125-16L, GR04.125-25L: for sensors GR04.202P, GR04.202N
 - C-slot (straight, short design) GR04.125-16L, GR04.125-25L: for sensors: GR04.280P, GR04.280N
 - T-slot (straight) GR04.125-32L, GR04.125-40L, GR04.125-50L: for sensors: GR04.199, GR04.199NPN

Calculation of the inner gripping diameter:

- > Min.: dimensions W closed x 2
- > Max.: dimensions W opened x 2

Technical data

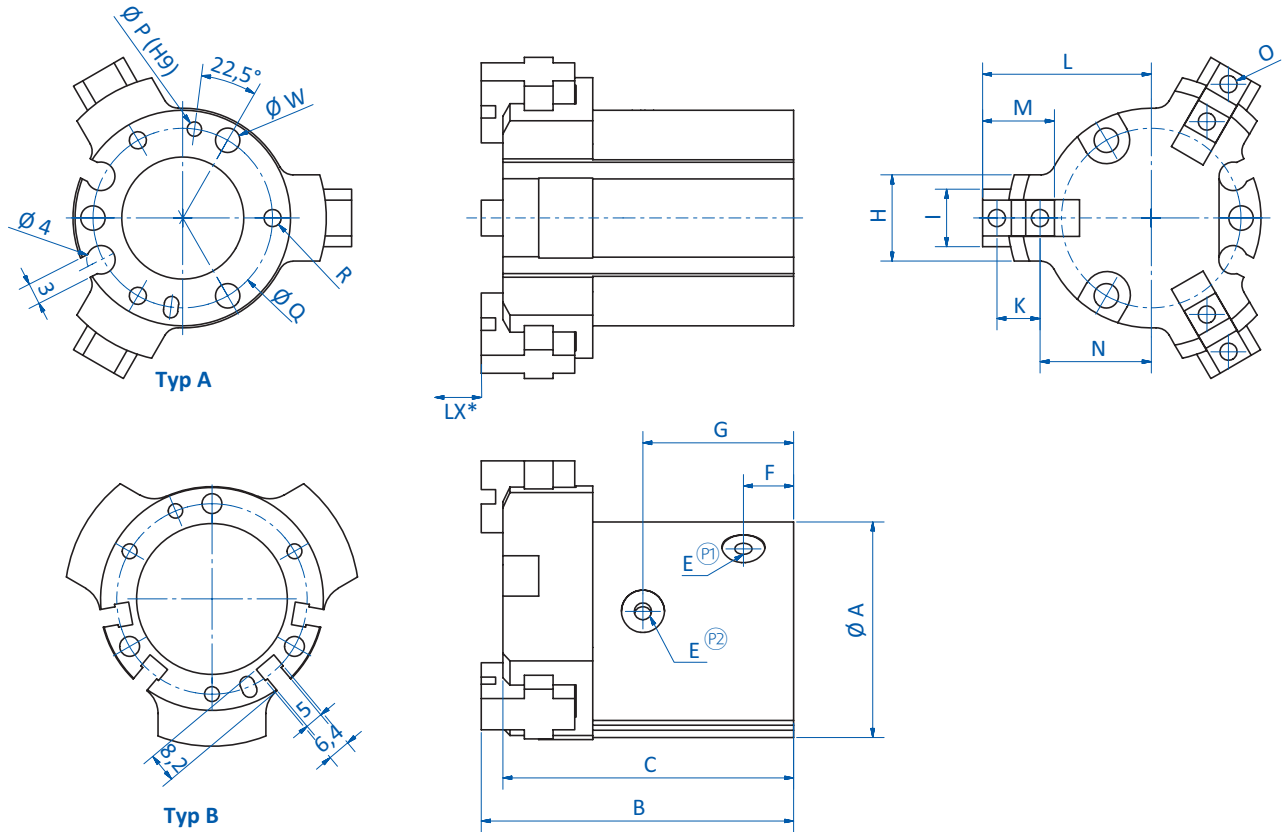
Item no.	GR04.125-16L	GR04.125-25L	GR04.125-32L	GR04.125-40L	GR04.125-50L
Operating pressure [bar (psi)]	2 - 6 (29 - 87)	2 - 6 (29 - 87)	1 - 6 (14.5 - 87)	1 - 6 (14.5 - 87)	1 - 6 (14.5 - 87)
Piston diameter [mm]	16	25	32	40	50
Stroke per gripper jaw [mm]	5	6	8	10	14
Closing force at 5 bar (72,5 psi) [N]	14	42	74	118	187
Opening force at 5 bar (72.5 psi) [N]	16	47	82	130	204
Operating frequency [Hz]	120	120	60	60	60
Operating temperature [°C (°F)]	-10 - 60 (14 - 140)	-10 - 60 (14 - 140)	-10 - 60 (14 - 140)	-10 - 60 (14 - 140)	-10 - 60 (14 - 140)
Weight [g]	100	190	373	600	930
Accessories	Sensor: GR04.198 Sensor: GR04.198/NPN Sensor: GR04.202P Sensor: GR04.202N Sensor: GR04.280P Sensor: GR04.280N Mounting bracket: GR06.125-16	Sensor: GR04.198 Sensor: GR04.198/NPN Sensor: GR04.202P Sensor: GR04.202N Sensor: GR04.280P Sensor: GR04.280N Mounting bracket: GR06.125-25	Sensor: GR04.199 Sensor: GR04.199/NPN Mounting bracket: GR06.125-32	Sensor: GR04.199 Sensor: GR04.199/NPN Mounting bracket: GR06.125-40	Sensor: GR04.199 Sensor: GR04.199/NPN Mounting bracket: GR06.125-50



Grippers | Parallel grippers

3-finger grippers for large strokes

Dimensions



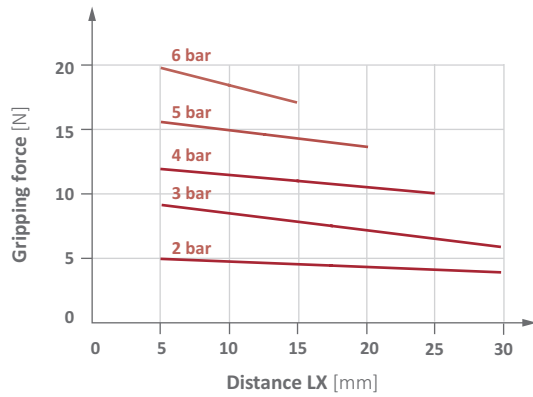
* = LX: Distance between the gripper jaw and the gripper (see gripper force diagrams) [Ⓟ] = Compressed air supply (open) [Ⓠ] = Compressed air supply (close)

Item no.	GR04.125-16L	GR04.125-25L	GR04.125-32L	GR04.125-40L	GR04.125-50L
Ø A [mm]	30	42	52	62	70
B [mm]	43.5	49	58	64	77.5
C [mm]	40.5	46	55	61	74.5
E	M3	M5	M5	M5	M5
F [mm]	7	7	8	9	9
G [mm]	21	23.5	28	31	38
H [mm]	12	19	24	30	32
I [mm]	8	13	16	18	20
K [mm]	6	8	11	12	14
L open [mm]	23.5	30	42	47.5	60
L closed [mm]	18.5	24	34	37.5	46
M [mm]	10	14	20	21	24
N open [mm]	15.5	19	26.5	31	41
N closed [mm]	10.5	13	18.5	21	27
O	M3/5deep	M3/6deep	M4/8deep	M4/8deep	M5/10deep
Ø P	2x2	3x3	3x3	4x4	4x4
Ø Q [mm]	25	34	44	53	62
R	M3x0.5x1.5	M4x0.7x1.5	M4x0.7x6	M5x0.8x10	M5x0.8x10
Ø W [mm]	3.4	4.5	4.5	5.5	5.5
Model	A	A	B	B	B

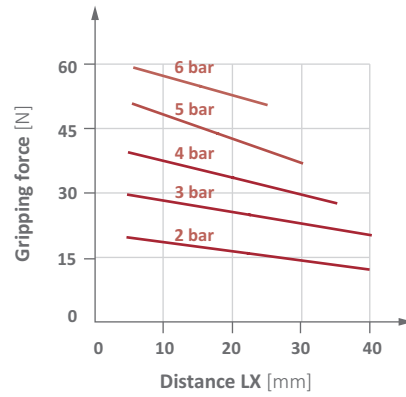


Diagrams

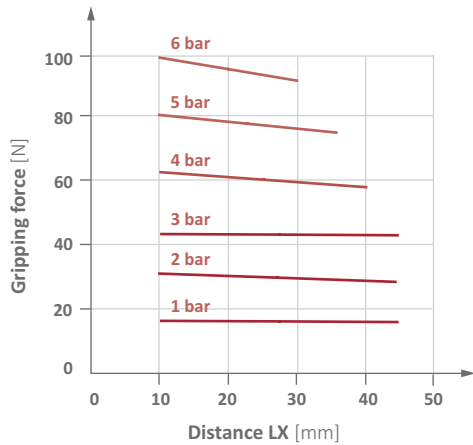
> Gripping force piston diameter 16 mm



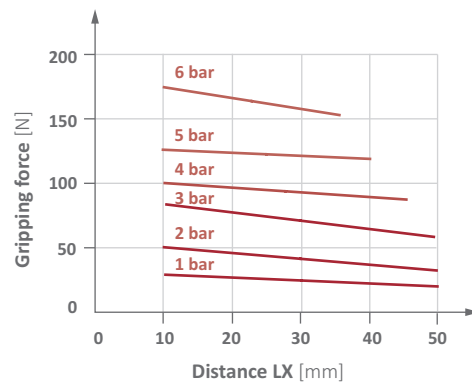
> Gripping force piston diameter 25 mm



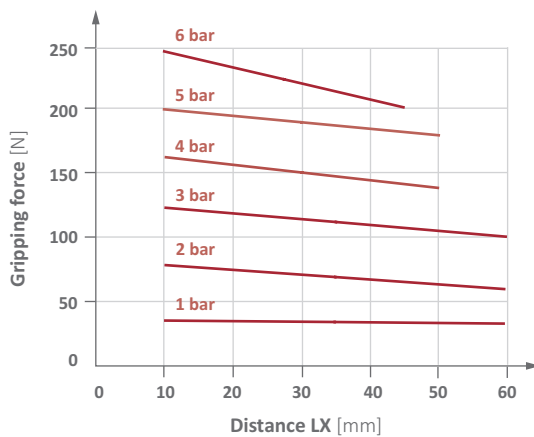
> Gripping force piston diameter 32 mm



> Gripping force piston diameter 40 mm



> Gripping force piston diameter 50 mm



* = LX distance to gripping point