



Rotary feedthroughs for vacuum

Rotary feedthroughs for revolving machine parts



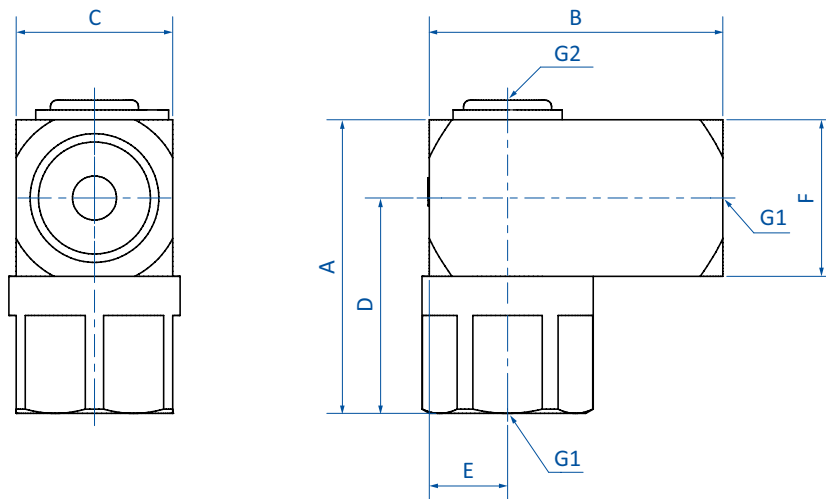
Product notes

- > Vacuum inlet for revolving machine parts
- > Suitable for fast moving machinery or gripping systems
- > Only suitable for vacuum, not for compressed air
- > Construction: Housing of brass, nickel-plated, NBR seals, guide pins, flange screws and retaining ring: Steel galvanized

Technical data

Item no.	Nominal width [mm]	Flow rate solenoid valve [Nl/min]	U max. [1/min]	Operating temperature [°C (°F)]	Weight [g]
30.816	5	425	500	-10 - 85 (14 - 185)	69
30.817	5	465	550	-10 - 85 (14 - 185)	58
30.818	8	1,350	300	-10 - 85 (14 - 185)	150

Dimensions



Item no.	G1	G2	A [mm]	B [mm]	C [mm]	D [mm]	E [mm]	F [mm]
30.816	G1/8	--	32	30	16	22	8	16
30.817	G1/4	--	32	30	16	22	8	16
30.818	G3/8	G1/8	39	40	25	26	12.5	20