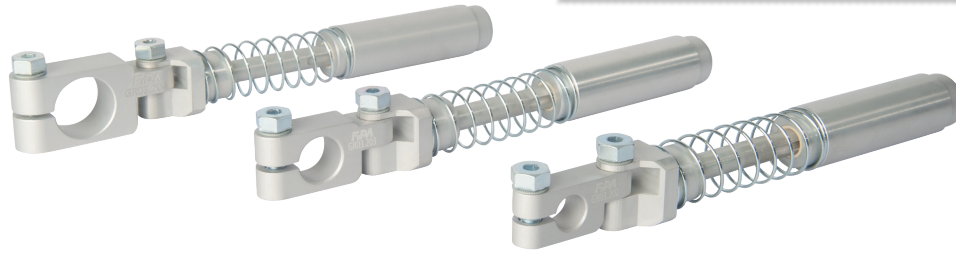




## Elbow arms with sliding bush – spring compensated, adjustable and non-rotating

PRECISE FUNCTIONING EVEN UNDER HIGH LOAD



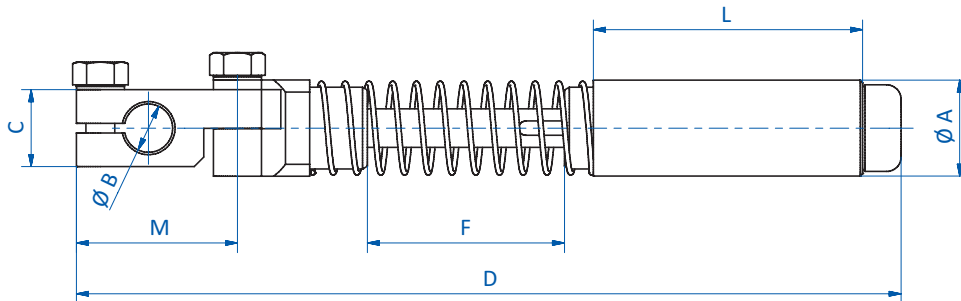
### Product notes

- > Elements for connecting grippers
- > Guiding through sliding bushes for high precision by absorbing lateral forces and moments
- > Spring compensates for variation in ejection stroke

### Technical data

Item no.	Suitable for grippers with clamping $\varnothing$ [mm]	Stroke [mm]	Weight [g]
GR03.202	10	40	104
GR03.203	14	40	111
GR03.204	20	40	122

### Dimensions



Item no.	$\varnothing A$ [mm]	$\varnothing B$ [mm]	C [mm]	D [mm]	F [mm]	L [mm]	M [mm]
GR03.202	20	10	16	171.5	40	55.5	33.5
GR03.203	20	14	20	177.5	40	55.5	39.5
GR03.204	20	20	25	185.5	40	55.5	47.5