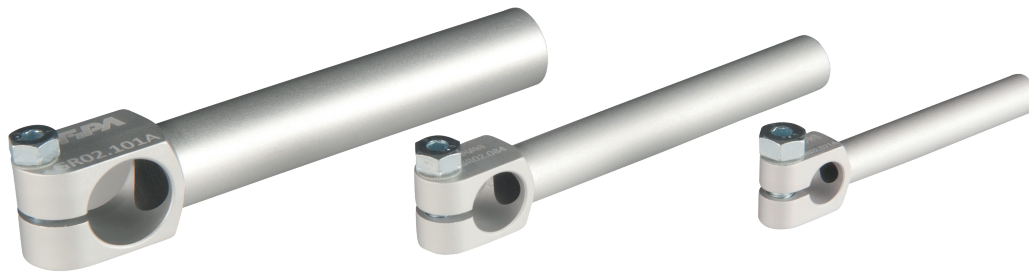




### Angle arms – rigid



#### Product notes

> Components for mounting grippers, gripper fingers or gripper arms

Technical data		Dimensions							
Item no.	Weight [g]	Ø A [mm]	B [mm]	C [mm]	D [mm]	G [mm]	H [mm]	Ø J [mm]	L [mm]
GR02.070A	20	10	16	51	16	7	21.7	10	30
GR02.071A	24	10	16	81	10	7	21.7	10	60
GR02.072A	28	10	16	111	16	7	21.7	10	90
GR02.083	36	14	18	70.5	20	9.5	23.7	14	45
GR02.084	45	14	18	115.5	20	9.5	23.7	14	90
GR02.085	52	14	18	155.5	20	9.5	23.7	14	130
GR02.100A	61	20	24	84	25	13	29.7	20	50
GR02.101A	80	20	24	134	25	13	29.7	20	100
GR02.102A	95	20	24	184	25	13	29.7	20	150
GR02.104	137	30	36	98	30	21	42.3	30	50
GR02.105	171	30	36	148	30	21	42.3	30	100
GR02.106	205	30	36	198	30	21	42.3	30	150
GR02.107	239	30	36	248	30	21	42.3	30	200
GR02.108	12	10	16	36	10	7	21.7	10	15
GR02.109	17.8	14	18	45.5	14	9.5	23.7	14	20
GR02.120	32.7	20	24	59	20	13	29.6	20	25
GR02.121	97.2	30	36	73	30	21	42.3	20	25



# Gripper arms | Angle arms

Angle arms – rigid

## Dimensions

