

# Linear technology | Lifting cylinders

## Lifting cylinders – vacuum-operated

### Lifting cylinders – vacuum-operated

Torsionally rigid



55.000 | 55.001 | 55.004



55.002

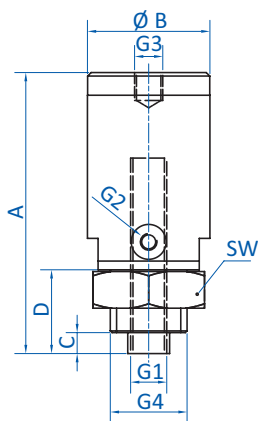
#### Product notes

- > Picking-up and stacking flat and sensitive objects such as e.g. signs, cards, paper, veneers
- > Suitable for short cycle times
- > Application e.g. for workpiece positioning in cutting stations
- > Robust aluminum housing, Hartcoat® treated
- > Non-rotating piston rod
- > Low-noise version
- > 55.002: stacking and lifting of metal sheet and heavy parts
- > Not suitable for workpieces permeable to air
- > Customized sizes on request

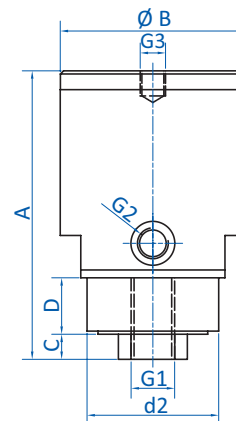
#### Technical data

| Item no. | Stroke [mm] | Volume flow at 80 % vacuum [NI/min] | Lifting force at 80 % vacuum [N] | Cycle time (extend-suction-lift) [s] | Operating temperature [°C (°F)] | Weight [g] |
|----------|-------------|-------------------------------------|----------------------------------|--------------------------------------|---------------------------------|------------|
| 55.000   | 17          | 15                                  | 3                                | 0.3                                  | 5 - 80 (41 - 176)               | 39         |
| 55.001   | 25          | 35                                  | 7                                | 0.4                                  | 5 - 80 (41 - 176)               | 111        |
| 55.002   | 30          | 35                                  | 50                               | 1.4                                  | 5 - 80 (41 - 176)               | 331        |
| 55.004   | 40          | 35                                  | 7                                | 0.8                                  | 5 - 80 (41 - 176)               | 138        |

#### Dimensions

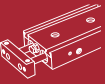


55.000 | 55.001 | 55.004



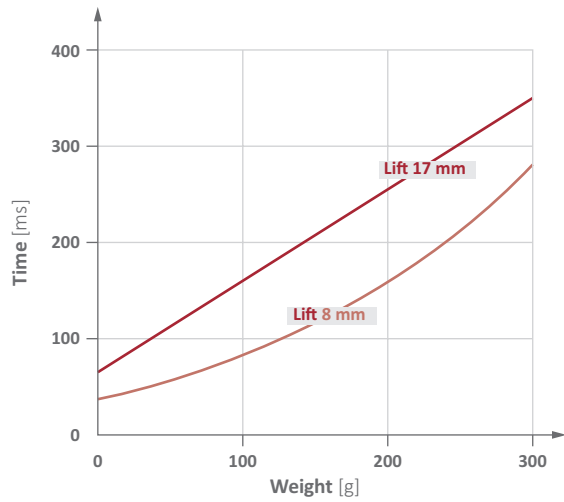
55.002

| Item no. | G1   | G2   | G3  | G4      | A [mm] | Ø B [mm] | C [mm] | D [mm] | d2 [mm] | SW |
|----------|------|------|-----|---------|--------|----------|--------|--------|---------|----|
| 55.000   | M5   | M5   | M6  | M16x1.5 | 55.5   | 24       | 4      | 16     | --      | 19 |
| 55.001   | G1/8 | M5   | M8  | M22x1.5 | 78     | 35       | 6      | 22     | --      | 27 |
| 55.002   | G1/4 | G1/4 | M10 | --      | 92     | 59       | 8      | 18     | 42      | -- |
| 55.004   | G1/8 | G1/8 | M8  | M22x1.5 | 99     | 35       | 9      | 24     | --      | 27 |



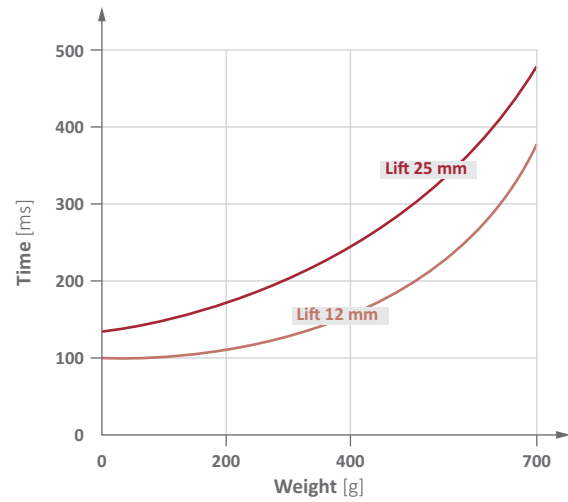
### Diagrams

> Double stroke lifting time against weight



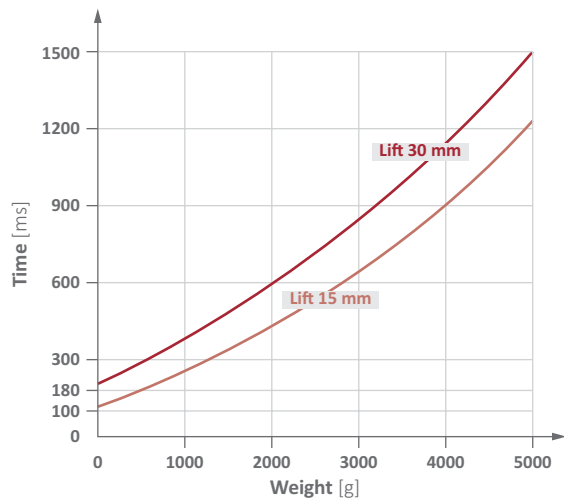
55.000

> Double stroke lifting time against weight



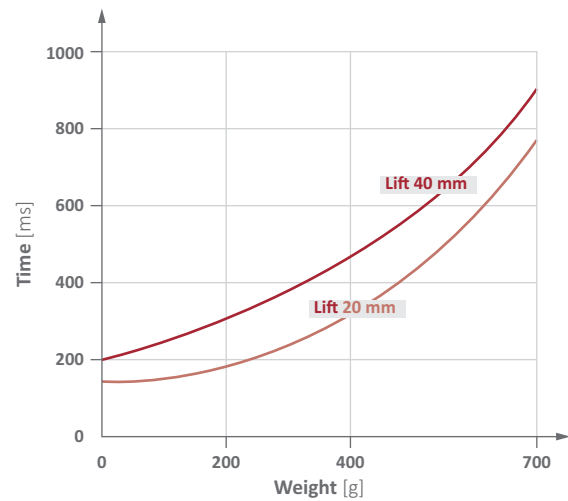
55.001

> Double stroke lifting time against weight



55.002

> Double stroke lifting time against weight



55.004