

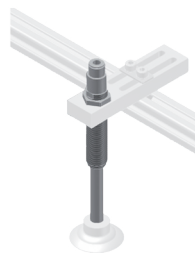


Fastening elements vacuum cups | Lifting cylinders

Vacuum lifting cylinders, for flat suction picking – operated by compressed air

Vacuum lifting cylinders, for flat suction picking – operated by compressed air

For flat suction picking, e.g. for suction cup series SFU-F Ø 4 - 15 mm



Product notes

- > Stacking and destacking of workpieces
- > Vacuum generation by compressed air using an integrated ejector
- > Lifting cylinder extended during idle state
- > Cycle time independent of stroke and weight

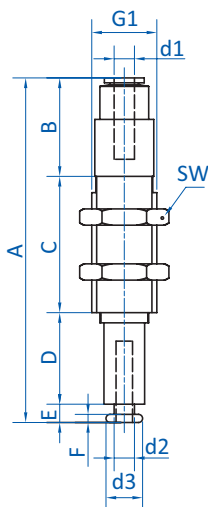
Ordering notes

- > Suitable vacuum cups can be found in chapter vacuum cups series, flat vacuum cups SFU-F Ø 4 - 15 mm and bellows vacuum cups SBF-B Ø 6 - 15 mm

Technical data

Item no.	Stroke [mm]	Lifting force [N]	Operating pressure [bar (psi)]	Vacuum level [mbar (inHg)]	Cycles [1/min]	Weight [g]	Suitable mounting bracket
55.100	5	3.5 - 5	3.5 - 4.5 (50.8 - 65.3)	-700 (-20.7)	50	33	GR02.231
55.102	10	3.5 - 5	3.5 - 4.5 (50.8 - 65.3)	-700 (-20.7)	50	36	GR02.231
55.104	20	3.5 - 5	3.5 - 4.5 (50.8 - 65.3)	-700 (-20.7)	50	41	GR02.231
55.106	30	3.5 - 5	3.5 - 4.5 (50.8 - 65.3)	-700 (-20.7)	50	45	GR02.231
55.108	5	3.5 - 5	3.5 - 4.5 (50.8 - 65.3)	-700 (-20.7)	50	32	GR02.231
55.110	10	3.5 - 5	3.5 - 4.5 (50.8 - 65.3)	-700 (-20.7)	50	45	GR02.231
55.112	20	3.5 - 5	3.5 - 4.5 (50.8 - 65.3)	-700 (-20.7)	50	52	GR02.231
55.114	30	3.5 - 5	3.5 - 4.5 (50.8 - 65.3)	-700 (-20.7)	50	45	GR02.231

Dimensions



Fastening elements vacuum cups | Lifting cylinders

Vacuum lifting cylinders, for flat suction picking – operated by compressed air



Item no.	A [mm]	B [mm]	C [mm]	D [mm]	d1 [mm]	d2 [mm]	d3 [mm]	E [mm]	F [mm]	G1	SW
55.100	54.2	23.5	22	5	4	5.2	8.7	4.5	2	M16x1	19
55.102	64.2	23.5	27	10	4	5.2	8.7	4.5	2	M16x1	19
55.104	85	23.5	37	20	4	5.2	8.7	4.5	2	M16x1	19
55.106	105	23.5	47	30	4	5.2	8.7	4.5	2	M16x1	19
55.108	56.5	25	22	5	6	5.2	8.7	4.5	2	M16x1	19
55.110	63.5	25	27	10	6	5.2	8.7	4.5	2	M16x1	19
55.112	85	25	37	20	6	5.2	8.7	4.5	2	M16x1	19
55.114	106.5	25	47	30	6	5.2	8.7	4.5	2	M16x1	19