



### "Inline" throttle valves



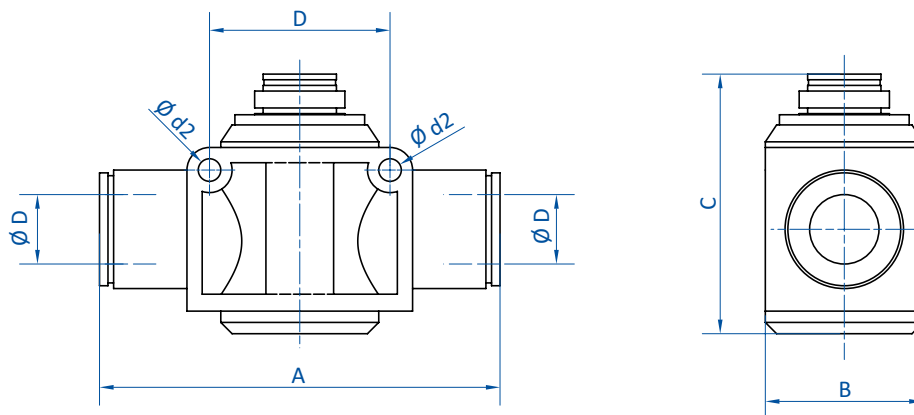
#### Product notes

- > Limitation of suction flow at a constant vacuum level
- > Reducing leakage at unoccupied vacuum cups maintains an adequate vacuum level for vacuum cups covered by products and thus prevents products from being dropped
- > Manual adjustment using knurled screw
- > Simple installation in the line tubing

#### Technical data

Item no.	Operating pressure [bar (psi)]	Operating temperature [°C (°F)]	Weight [g]
32.540	-1 - 9 (-14.5 - 130.5)	0 - 60 (32 - 140)	12
32.541	-1 - 9 (-14.5 - 130.5)	0 - 60 (32 - 140)	33
32.542	-1 - 9 (-14.5 - 130.5)	0 - 60 (32 - 140)	44
32.543	-1 - 9 (-14.5 - 130.5)	0 - 60 (32 - 140)	77
32.544	-1 - 9 (-14.5 - 130.5)	0 - 60 (32 - 140)	127

#### Dimensions



Item no.	Ø D [mm]	A [mm]	B [mm]	C [mm]	D [mm]	d2 [mm]
32.540	4	37.5	11	29.5	14	3.2
32.541	6	46	15	44	20	4.3
32.542	8	51.5	18	48	22	4.3
32.543	10	59.5	21	53.5	26	4.3
32.544	12	72	28	58	32	4.3