



Valve technology | Flow control valves

Flow control valves without leakage loss

Flow control valves without leakage loss



Product notes

- > Sealing of unused suction openings to maintain the system vacuum
- > No leakage loss, which means it is particularly well suited for dense workpieces
- > Closed valves are reset by switching off the vacuum
- > Vertical mounting

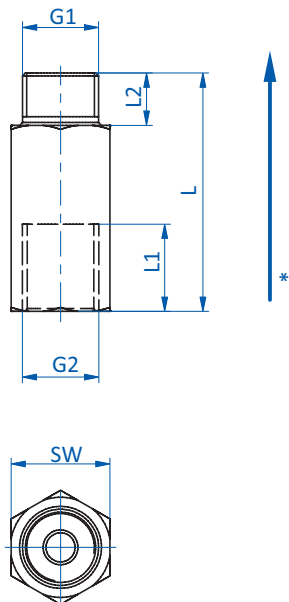
Notes

- > These valves work only if the vacuum is switched on after the vacuum cup has been set in position

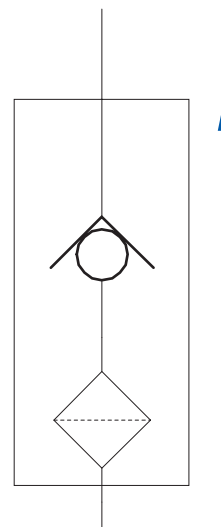
Technical data

Item no.	Suction power [NI/min]	Min. vacuum level required [mbar (inHg)]	Weight [g]
63.017	28.3	-250 (-7.4)	13
63.018	28.3	-250 (-7.4)	16

Dimensions



Wiring diagram



* = Flow direction

Item no.	G1	G2	L [mm]	L1 [mm]	L2 [mm]	SW
63.017	G1/8	G1/4	41	10	9	17
63.018	G1/4	G1/4	41	10	9	17