



Magnetic sensors, 3-pole M8 plug



Product notes

- > C- and T-slot sensors for active gripping elements, linear units, compact cylinders
- > PNP or NPN switching functions
- > With control LED
- > PNP-Sensors: connect supply voltage +Vs (mainly 24 V) with digital input signal
- > NPN-Sensors: connect digital input signal with ground signal 0 V
- > Cable and M8 3-pole plug included in scope of delivery
- > Connector cable for sensors:
 - 20.503: 3-pole M8, cable straight, length 2,500 mm, open wire
 - 20.507: 3-pole M8, cable 90°, length 2,000 mm, open wire
 - 20.570: 3-pole M8, length 1,500 mm, end with plug 3-pole M8

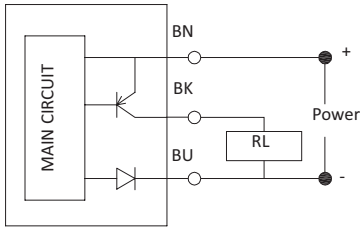
Technical data

Item no.	Nut-Model	Electric connection	Plug design	Operating voltage [VDC]	Max. switching current [mA]	Max. power consumption [W]	Protection class	Cable length [mm]	Operating temperature [°C (°F)]	Weight [g]	Suitable connector cable
GR04.198	C	PNP	Straight	6 - 30	200	6	IP67	300	-10 - 70 (14 - 158)	18	20.503 20.507 20.570
GR04.198/NPN	C	NPN	Straight	6 - 30	200	6	IP67	300	-10 - 70 (14 - 158)	18	20.503 20.507 20.570
GR04.202P	C	PNP	90° elbow	5 - 30	50	1.5	IP67	150	-10 - 70 (14 - 158)	25	20.503 20.507 20.570
GR04.202N	C	NPN	90° elbow	5 - 30	50	1.5	IP67	150	-10 - 70 (14 - 158)	25	20.503 20.507 20.570
GR04.280P	C	PNP	Straight, short	4.5 - 28	50	1.5	IP67	150	-10 - 70 (14 - 158)	21	20.503 20.507 20.570
GR04.280N	C	NPN	Straight, short	4.5 - 28	50	1.5	IP67	150	-10 - 70 (14 - 158)	21	20.503 20.507 20.570
GR04.199	T	PNP	Straight	10 - 30	100	3	IP67	150	-10 - 70 (14 - 158)	25	20.503 20.507 20.570
GR04.199/NPN	T	NPN	Straight	10 - 30	100	3	IP67	150	-10 - 70 (14 - 158)	25	20.503 20.507 20.570
GR04.203P	T	PNP	Straight, short	5 - 30	200	6	IP67	150	-10 - 70 (14 - 158)	27	20.503 20.507 20.570
GR04.203N	T	NPN	Straight, short	5 - 30	200	6	IP67	150	-10 - 70 (14 - 158)	27	20.503 20.507 20.570

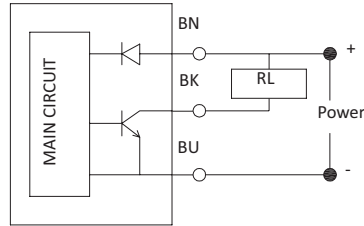


Wiring diagrams

PNP

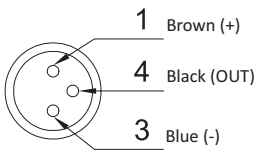


NPN

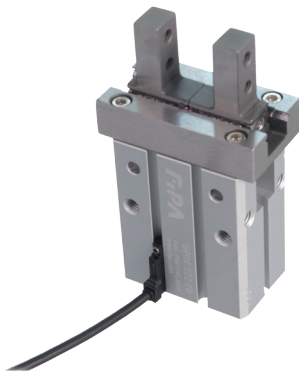


BN = Brown, BK = Black, BU = Blue

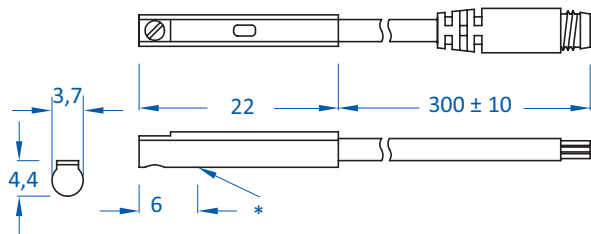
Plug assignment



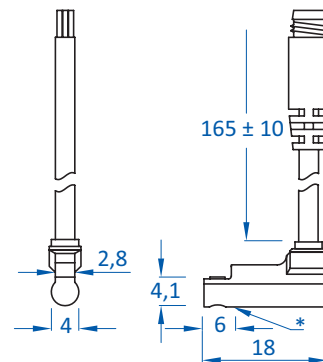
Application example



Dimensions



GR04.198 | GR04.198/NPN

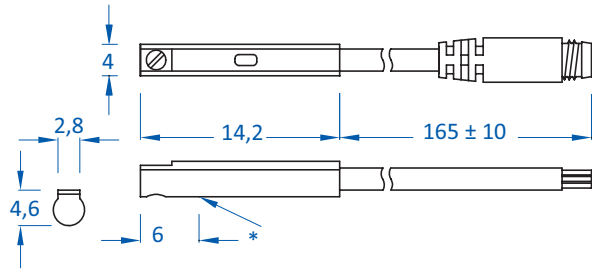


GR04.202P | GR04.202N

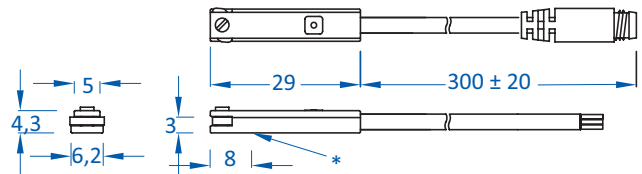
* = Sensing point



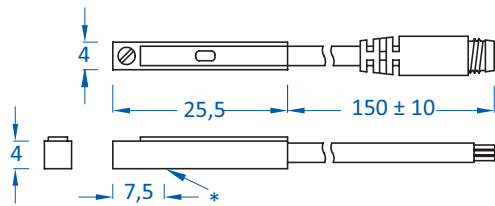
Dimensions



GR04.280P | GR04.280N



GR04.199 | GR04.199/NPN

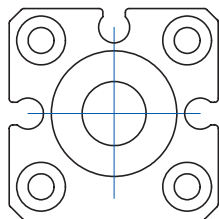
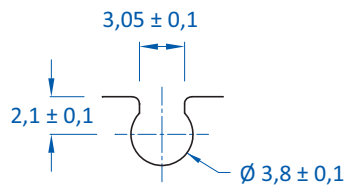


GR04.203P | GR04.203N

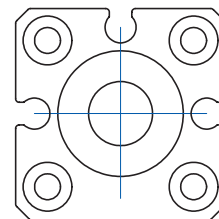
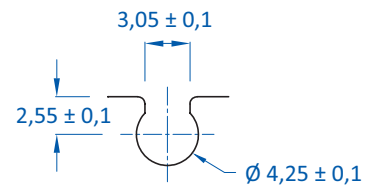
* = Sensing point

Matching nut dimensions

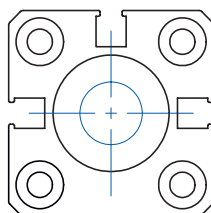
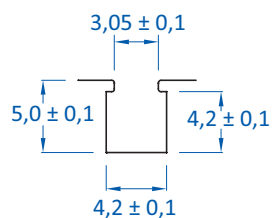
> GR04.198



> GR04.202 | GR04.280



> GR04.203



> GR04.199

