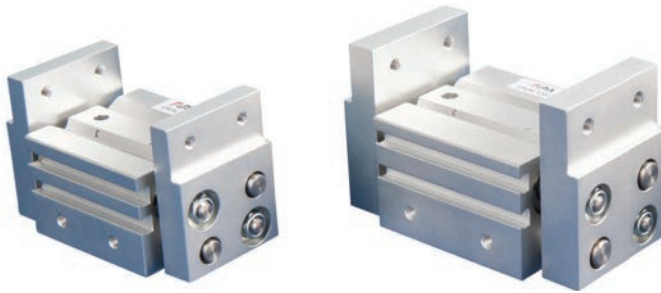




Parallel grippers for large strokes – piston diameter 10 - 20 mm



Product notes

- > Gripper for large strokes for handling large parts
- > Double-acting for inside/outside gripping and short duty cycles
- > Body and jaws made of high-strength aluminum alloy
- > Sensors for monitoring gripper action via piston position optionally available
- > Medium: filtered and oiled/unoiled air
- > PNP and NPN sensors:
 - C-slot (straight) for sensors: GR04.198, GR04.198/NPN
 - C-slot (90° angle) for sensors: GR04.202P, GR04.202N
 - C-slot (straight, short design) for sensors: GR04.280P, GR04.280N

Technical data

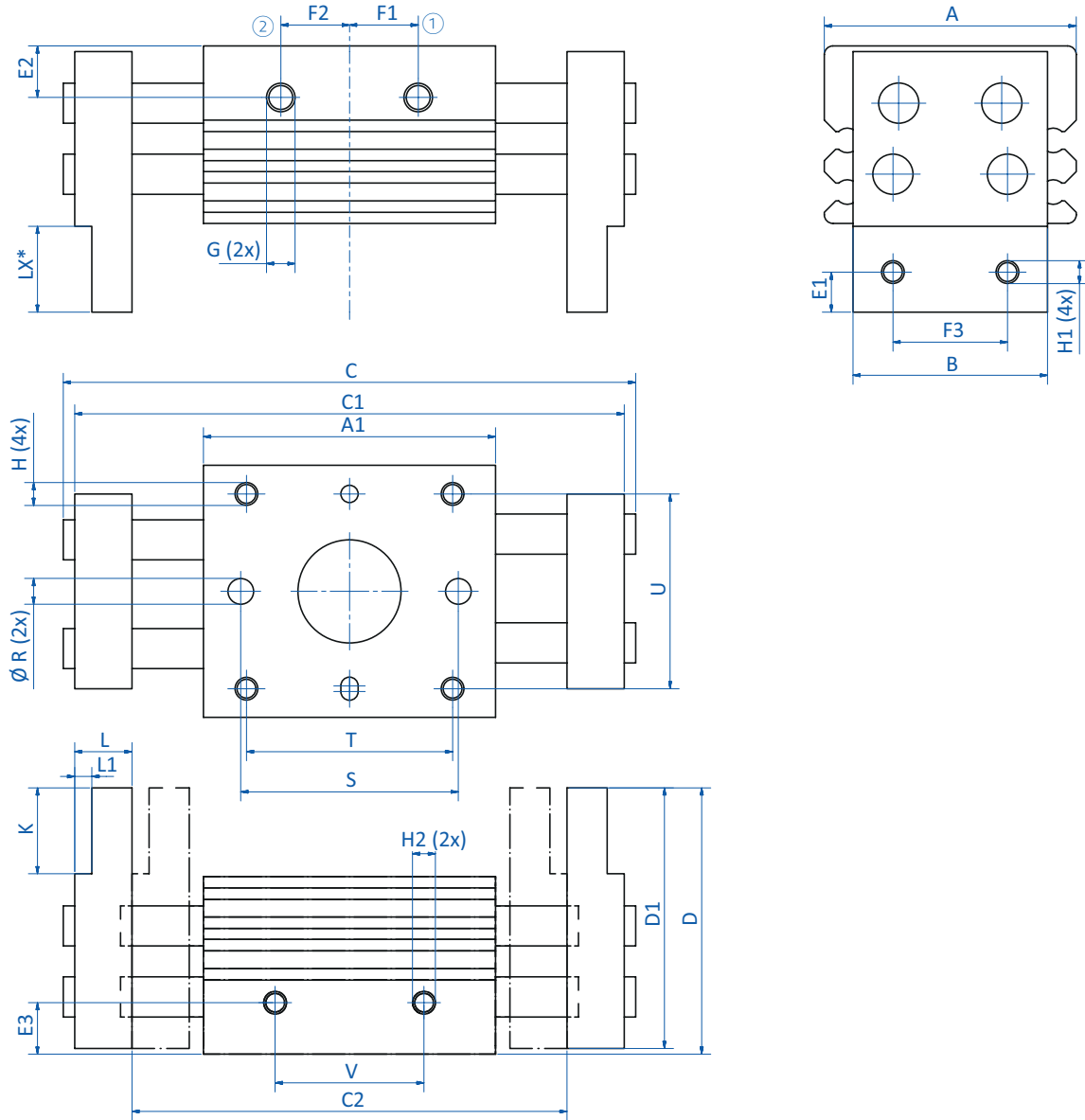
Item no.	GR04.510	GR04.510-1	GR04.510-2	GR04.516	GR04.516-1	GR04.516-2	GR04.520	GR04.520-1	GR04.520-2
Operating pressure [bar (psi)]	1.5 - 6 (21.8 - 87)	1.5 - 6 (21.8 - 87)	1.5 - 6 (21.8 - 87)	1 - 6 (14.5 - 87)	1 - 6 (14.5 - 87)	1 - 6 (14.5 - 87)	1 - 6 (14.5 - 87)	1 - 6 (14.5 - 87)	1 - 6 (14.5 - 87)
Piston diameter [mm]	10	10	10	16	16	16	20	20	20
Stroke per gripper jaw [mm]	10	20	30	15	30	40	20	40	50
Closing force at 6 bar (87 psi) [N]	22	22	22	60	60	60	100	100	100
Operating temperature [°C (°F)]	-5 - 70 (23 - 158)	-5 - 70 (23 - 158)	-5 - 70 (23 - 158)	-5 - 70 (23 - 158)	-5 - 70 (23 - 158)	-5 - 70 (23 - 158)	-5 - 70 (23 - 158)	-5 - 70 (23 - 158)	-5 - 70 (23 - 158)
Weight [g]	280	350	430	600	800	950	1,000	1,500	1,700
Suitable sensors	GR04.198 GR04.198/NPN GR04.202P GR04.202N GR04.280P GR04.280N			GR04.198 GR04.198/NPN GR04.202P GR04.202N GR04.280P GR04.280N			GR04.198 GR04.198/NPN GR04.202P GR04.202N GR04.280P GR04.280N		



Grippers | Parallel grippers

Parallel grippers for large strokes – piston diameter 10 - 20 mm

Dimensions



* = LX: Distance gripper jaws – workpiece ① = Compressed air supply (open) ② = Compressed air supply (close)

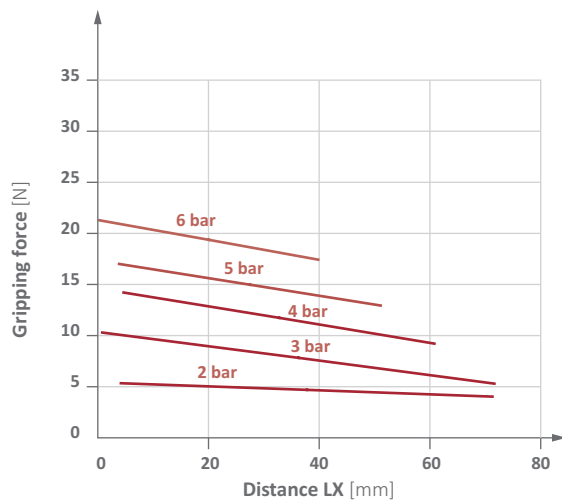
Item no.	GR04.510	GR04.510-1	GR04.510-2	GR04.516	GR04.516-1	GR04.516-2	GR04.520	GR04.520-1	GR04.520-2
A [mm]	44	44	44	55	55	55	65	65	65
A1 [mm]	51	67	85	60	90	110	71	113	133
B [mm]	34	34	34	43	43	43	54	54	54
C [mm]	100	142	180	128	200	240	160	260	300
C1 [mm]	96	138	176	124	196	236	156	256	296
C2 [mm]	76	98	116	94	136	156	116	176	196
D [mm]	46	46	46	58	58	58	70	70	70
D1 [mm]	45.5	45.5	45.5	57.5	57.5	57.5	69	69	69
E1 [mm]	7	7	7	8	8	8	10	10	10
E2 [mm]	9	9	9	10	10	10	11	11	11
E3 [mm]	9	9	9	10	10	10	11	11	11
F1 [mm]	11.5	19.5	28.5	13	25	35	16	34	44



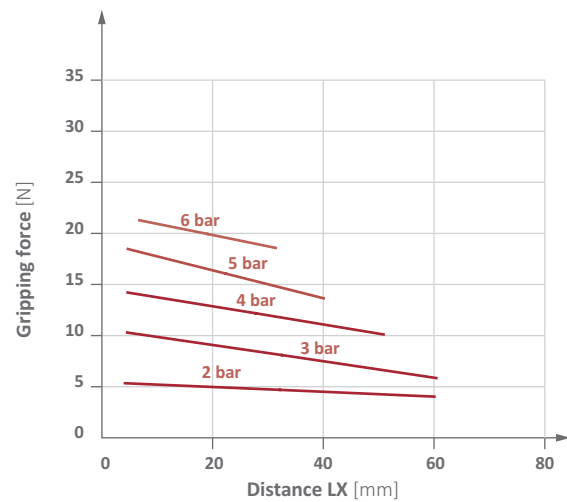
Item no.	GR04.510	GR04.510-1	GR04.510-2	GR04.516	GR04.516-1	GR04.516-2	GR04.520	GR04.520-1	GR04.520-2
F2 [mm]	11.5	19.5	28.5	13	25	35	16	34	44
F3 [mm]	20	20	20	25	25	25	30	30	30
G	M5	M5	M5	M5	M5	M5	M5	M5	M5
H	M4	M4	M4	M5	M5	M5	M6	M6	M6
H1	M4	M4	M4	M5	M5	M5	M6	M6	M6
H2	M4	M4	M4	M5	M5	M5	M6	M6	M6
K [mm]	15	15	15	19	19	19	24	24	24
L [mm]	10	10	10	13	13	13	17	17	17
L1 [mm]	3	3	3	4	4	4	4.5	4.5	4.5
Ø R [mm]	4.5	4.5	4.5	5.5	5.5	5.5	6.6	6.6	6.6
S [mm]	38	54	72	40	70	90	54	96	116
T [mm]	36	52	70	45	75	95	58	100	120
U [mm]	34	34	34	42	42	42	52	52	52
V [mm]	26	42	60	28	58	78	38	80	100

Diagrams

> Gripping force piston diameter 10 mm – standard version



> Gripping force piston diameter 10 mm – versions 1 & 2



* = LX distance to gripping point

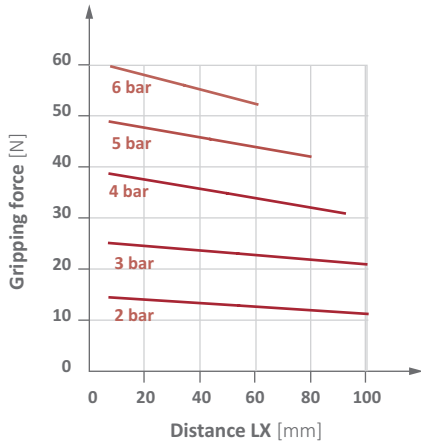


Grippers | Parallel grippers

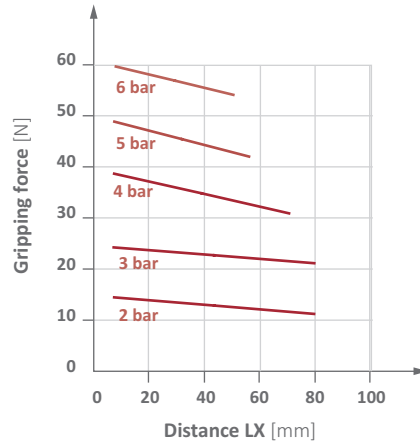
Parallel grippers for large strokes – piston diameter 10 - 20 mm

Diagrams

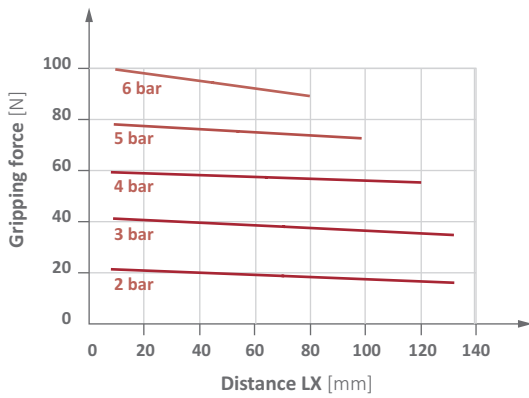
> Gripping force piston diameter 16 mm – standard version



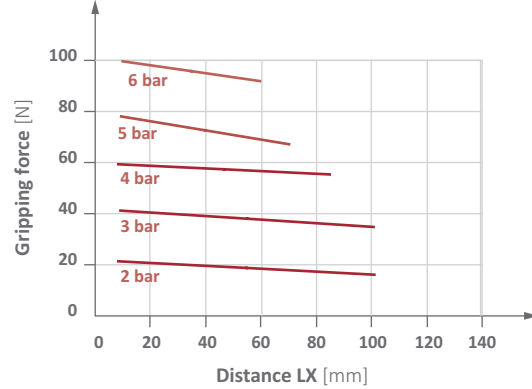
> Gripping force piston diameter 16 mm – versions 1 & 2



> Gripping force piston diameter 20 mm – standard version



> Gripping force piston diameter 20 mm – versions 1 & 2



* = LX distance to gripping point