



Series | Oval vacuum cups SO

Oval flat vacuum cups for dynamic handling of oily and dry metal sheets – SM-OF

Oval flat vacuum cups for dynamic handling of oily and dry metal sheets – SM-OF



EXCEPTIONALLY LONG LIFETIME

Product notes

Robust, oval NBR flat vacuum cups, 60° Shore A with vulcanized fittings made of aluminum.
Large area, multi-part anti-slip cleats.
Various connection threads available.
PWIS and silicone-free.

Advantage

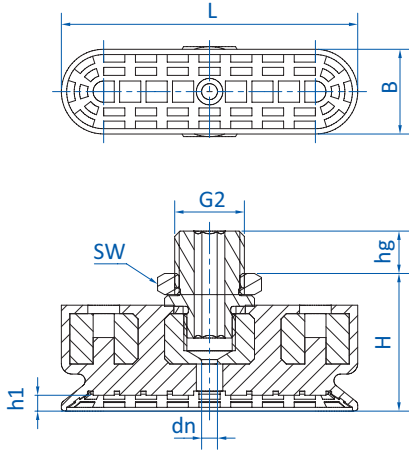
- > Exceptionally long lifetime – maximizes number of cycles and thus significantly reduces the costs of operation
- > Slip-free handling of oily and dry metal sheets due to anti-slip cleats. Good absorption of shear forces
- > Internal supports prevent deep drawing or deformation of thin sheets
- > Leak-free suction even with curved surfaces due to flexible sealing lip
- > Ideally suited for use in constricted spaces

Technical data

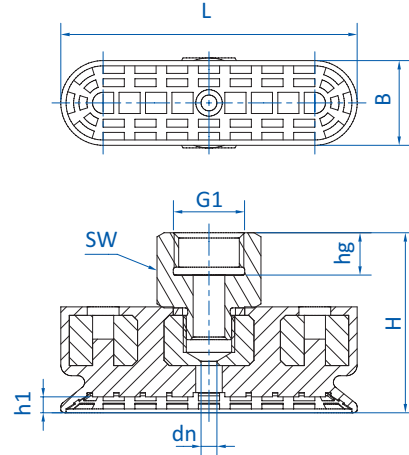
Model / Lip dimensions	Thread (Aluminium)						
	G1/4-male	G1/4-female	G3/8-female	M10-male	M14x1.5-male	Rectangular adapter	
SM-OF-55x16	130.55x16.140.1	130.55x16.141.1	130.55x16.142.1	130.55x16.143.1	130.55x16.144.1	130.55x16.145.1	3
SM-OF-65x20	130.65x20.146.1	130.65x20.147.1	130.65x20.148.1	130.65x20.149.1	130.65x20.150.1	130.65x20.151.1	3
SM-OF-95x30	130.95x30.152.1	130.95x30.153.1	130.95x30.154.1	130.95x30.155.1	130.95x30.156.1	130.95x30.157.1	3
SM-OF-85x40	130.85x40.158.1	130.85x40.159.1	130.85x40.160.1	130.85x40.161.1	130.85x40.162.1	130.85x40.163.1	4
SM-OF-105x50	130.105x50.164.1	130.105x50.165.1	130.105x50.166.1	130.105x50.167.1	130.105x50.168.1	130.105x50.169.1	5
SM-OF-125x60	130.125x60.170.1	130.125x60.171.1	130.125x60.172.1	130.125x60.173.1	130.125x60.174.1	130.125x60.175.1	6
SM-OF-145x70	130.145x70.176.1	130.145x70.177.1	130.145x70.178.1	130.145x70.179.1	130.145x70.180.1	130.145x70.181.1	7



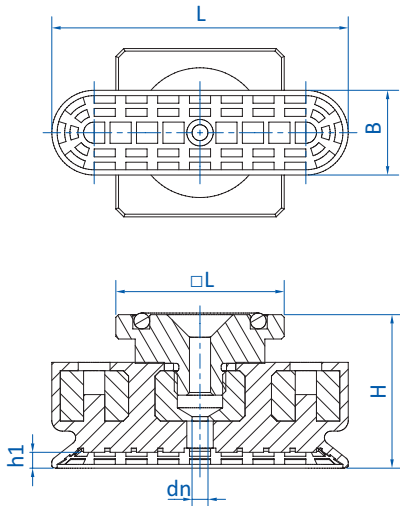
Dimensions



Drawing A



Drawing B



Drawing C

Item no.	Drawing	G1 (female)	G2 (male)	L [mm]	B [mm]	∅ dn [mm]	□L [mm]	H [mm]	h1 [mm]	hg [mm]	SW
130.55x16.140.1	A	--	G1/4	56	16	5	--	26	3	8	17
130.55x16.141.1	B	G1/4	--	56	16	6	--	34	3	8	17
130.55x16.142.1	B	G3/8	--	56	16	6	--	34	3	8	22
130.55x16.143.1	A	--	M10	56	16	5	--	26	3	12	17
130.55x16.144.1	A	--	M14x1.5	56	16	5	--	28	3	12	22
130.55x16.145.1	C	--	--	56	16	4	32	29	3	--	--
130.65x20.146.1	A	--	G1/4	66	23	5	--	18	3	8	17
130.65x20.147.1	B	G1/4	--	66	23	6	--	26	3	8	17
130.65x20.148.1	B	G3/8	--	66	23	6	--	26	3	8	22
130.65x20.149.1	A	--	M10	66	23	5	--	18	3	12	17
130.65x20.150.1	A	--	M14x1.5	66	23	5	--	20	3	12	22
130.65x20.151.1	C	--	--	66	23	4	32	21	3	--	--



Series | Oval vacuum cups SO

Oval flat vacuum cups for dynamic handling of oily and dry metal sheets – SM-OF

Item no.	Drawing	G1 (female)	G2 (male)	L [mm]	B [mm]	Ø dn [mm]	□L [mm]	H [mm]	h1 [mm]	hg [mm]	SW
130.95x30.152.*	A	--	G1/4	96	32	5	--	19	3	8	17
130.95x30.153.*	B	G1/4	--	96	32	6	--	27	3	8	17
130.95x30.154.*	B	G3/8	--	96	32	6	--	27	3	8	22
130.95x30.155.*	A	--	M10	96	32	5	--	19	3	12	17
130.95x30.156.*	A	--	M14x1.5	96	32	5	--	21	3	12	22
130.95x30.157.*	C	--	--	96	32	4	32	22	3	--	--
130.85x40.158.*	A	--	G1/4	86	40	5	--	20	4	8	17
130.85x40.159.*	B	G1/4	--	86	40	6	--	28	4	8	17
130.85x40.160.*	B	G3/8	--	86	40	6	--	28	4	8	22
130.85x40.161.*	A	--	M10	86	40	5	--	20	4	12	17
130.85x40.162.*	A	--	M14x1.5	86	40	5	--	22	4	12	22
130.85x40.163.*	C	--	--	86	40	4	32	23	4	--	--
130.105x50.164.*	A	--	G1/4	106	50	6	--	22	5	8	17
130.105x50.165.*	B	G1/4	--	106	50	8	--	30	5	8	17
130.105x50.166.*	B	G3/8	--	106	50	8	--	30.5	5	9	22
130.105x50.167.*	A	--	M10	106	50	5	--	22	5	12	17
130.105x50.168.*	A	--	M14x1.5	106	50	6	--	24	5	12	22
130.105x50.169.*	C	--	--	106	50	6	32	25	5	--	--
130.125x60.170.*	A	--	G1/4	126	60	6	--	24	6	8	17
130.125x60.171.*	B	G1/4	--	126	60	8	--	32	6	8	17
130.125x60.172.*	B	G3/8	--	126	60	8	--	32.5	6	9	22
130.125x60.173.*	A	--	M10	126	60	5	--	24	6	12	17
130.125x60.174.*	A	--	M14x1.5	126	60	6	--	26	6	12	22
130.125x60.175.*	C	--	--	126	60	6	32	27	6	--	--
130.145x70.176.*	A	--	G1/4	146	70	6	--	25	7	8	17
130.145x70.177.*	B	G1/4	--	146	70	8	--	33	7	8	17
130.145x70.178.*	B	G3/8	--	146	70	8	--	33.5	7	9	22
130.145x70.179.*	A	--	M10	146	70	5	--	25	7	12	17
130.145x70.180.*	A	--	M14x1.5	146	70	6	--	27	7	12	22
130.145x70.181.*	C	--	--	146	70	6	32	28	7	--	--