



Series | Flat vacuum cups SF

Flat vacuum cups, modular – SP-F

Flat vacuum cups, modular – SP-F



Product description

Universal flat vacuum cup in even, supported or deep design.
Design: Replacement sealing lip for attachment to fitting.





Advantage

- > High suction force
- > Fast cycle times possible
- > Very resistant to wear (Tepuflex®)
- > Compatible with established products from other vendors

Ordering notes:

Explanation of the ending of the accessory fitting:
> S: with screen

Technical data

Item no.	Model / Lip dimensions		Material / Colour	Accessories
Retaining ring:				
				
Smooth design				
102.005.090.*	SP-F-5	0.5	SI (tr), CR (sw)	--
102.007.091.*	SP-F-7	1	SI (tr), CR (sw)	--
102.009.092.*	SP-F-9	1.5	SI (tr), CR (sw)	--
102.011.093.*	SP-F-10	1	SI (tr), CR (sw)	--
102.016.098.*	SP-F-15	2	SI (tr), CR (sw)	--
102.020.095.*	SP-F-20	2.5	SI (tr), CR (sw)	78.011 (p.475)
102.030.096.*	SP-F-30	3.5	SI (tr), CR (sw)	78.011 (p.475)
102.040.094.*	SP-F-40	4	SI (tr), CR (sw)	78.012 (p.475)
102.050.097.*	SP-F-50	6.5	SI (tr), CR (sw)	78.013 (p.475)
				
With cleats				
104.016.003.*	SP-FA-16	0.5	SI (tr), CR (sw)	--
125.020.004.*	SP-FA-20	1	Tepuflex® (or), SI (tr), SI-LE (tr), CR (sw)	78.011 (p.475)
125.025.007.*	SP-FA-25	1	Tepuflex® (or), SI (tr), SI-LE (tr), CR (sw)	78.011 (p.475)
125.030.010.*	SP-FA-30	2	Tepuflex® (or), SI (tr), CR (sw)	78.011 (p.475)
125.040.013.*	SP-FA-40	2	Tepuflex® (or), SI (tr), CR (sw)	78.012 (p.475)
125.050.017.*	SP-FA-50	2.5	Tepuflex® (or), SI (tr), CR (sw)	78.013 (p.475)
154.078.027.*	SP-FA-75	3	Tepuflex® (or), SI (tr), SI-LE (tr), CR (sw)	--
154.113.028.*	SP-FA-110	5	Tepuflex® (or), SI (tr), SI-LE (tr), CR (sw)	--
154.155.026.*	SP-FA-150	5	Tepuflex® (or), SI (tr), SI-LE (tr), CR (sw)	--
				
Deep design				
122.016.012.*	SP-FD-16	1.5	SI (tr), CR (sw)	--
122.022.022.*	SP-FD-20	2.5	SI (tr), SI-LE (tr), CR (sw)	78.011 (p.475)
122.032.036.*	SP-FD-30	5	SI (tr), CR (sw)	78.011 (p.475)



Accessories

Item no.	Suitable fittings									
	M5- male	M5- female	M6- male	G1/8- male	G1/8- female	G1/4- male	G3/8- male	G3/8- female	G1/2- female	G3/4- female
Smooth design										
102.005.090.*	270.153	--	--	--	--	--	--	--	--	--
102.007.091.*	270.153	--	--	--	--	--	--	--	--	--
102.009.092.*	270.153	--	--	--	--	--	--	--	--	--
102.011.093.*	270.134	--	270.104	--	--	--	--	--	--	--
102.016.098.*	270.134	--	270.104	--	--	--	--	--	--	--
102.020.095.*	--	270.500-S	--	270.250, 270.503-S	--	--	--	--	--	--
102.030.096.*	--	270.500-S	--	270.250, 270.503-S	--	--	--	--	--	--
102.040.094.*	--	--	--	--	270.251, 270.501-S	270.506-S	270.505-S	--	--	--
102.050.097.*	--	--	--	--	270.252, 270.502-S	270.504-S	270.507-S	--	--	--
With cleats										
104.016.003.*	270.134	--	270.104	--	--	--	--	--	--	--
125.020.004.*	--	270.500-S	--	270.250, 270.503-S	--	--	--	--	--	--
125.025.007.*	--	270.500-S	--	270.250, 270.503-S	--	--	--	--	--	--
125.030.010.*	--	270.500-S	--	270.250, 270.503-S	--	--	--	--	--	--
125.040.013.*	--	--	--	--	270.251, 270.501-S	270.506-S	270.505-S	--	--	--
125.050.017.*	--	--	--	--	270.252, 270.502-S	270.504-S	270.507-S	--	--	--
154.078.027.*	--	--	--	--	270.527-S	--	--	270.528-S	270.529-S	--
154.113.028.*	--	--	--	--	--	--	--	270.530-S	270.531-S	--
154.155.026.*	--	--	--	--	--	--	--	--	270.532-S	270.533-S
Deep design										
122.016.012.*	270.134	--	270.104	--	--	--	--	--	--	--
122.022.022.*	--	270.500-S	--	270.250, 270.503-S	--	--	--	--	--	--
122.032.036.*	--	270.500-S	--	270.250, 270.503-S	--	--	--	--	--	--

* When ordering please add the appropriate material code to item no. You will find it on www.fipa.com.

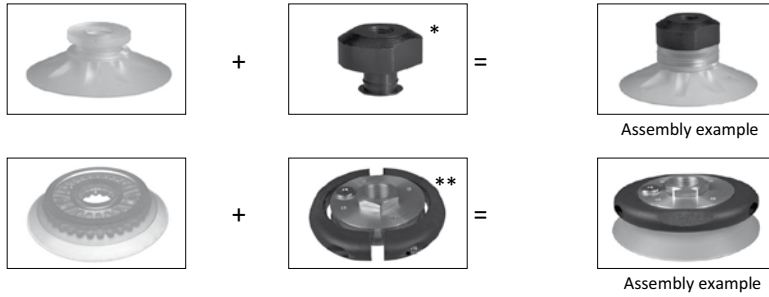


Series | Flat vacuum cups SF

Flat vacuum cups, modular – SP-F

Flat vacuum cups, modular

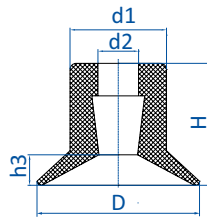
Example:



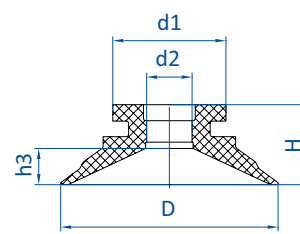
- * Fittings are optionally available with and without filter screen
- ** Fittings come fitted with filter screen as standard

- > The modular series allows you to assemble your own vacuum cups
- > Worn sealing lips can be replaced quickly, cost-effective and easily
- > High flexibility thanks to a large selection of fitting threads

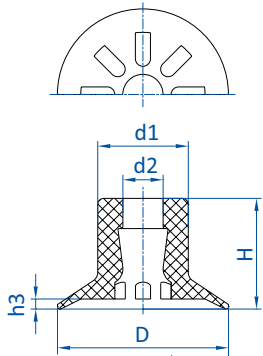
Dimensions



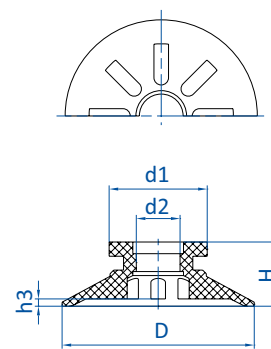
Drawing A



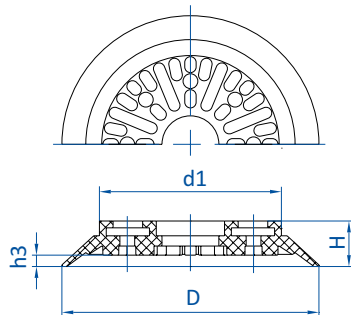
Drawing B



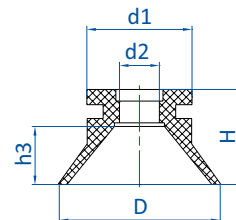
Drawing C



Drawing D



Drawing E



Drawing F

* When ordering please add the appropriate material code to item no. You will find it on www.fipa.com.



Item no.	Drawing	Ø D [mm]	Ø d1 [mm]	Ø d2 [mm]	H [mm]	h3 [mm]
Smooth design						
102.005.090._*	A	5	4.5	2	6	0.5
102.007.091._*	A	7	5	2	7	0.9
102.009.092._*	A	9.5	5	2	7	1.1
102.011.093._*	A	11	9	3.8	10.5	0.8
102.016.098._*	A	16	9.5	4	12	3
102.020.095._*	B	22	14.5	5.5	8	3
102.030.096._*	B	32	14.5	6.5	10.5	4.7
102.040.094._*	B	42	20	7	13.5	6
102.050.097._*	B	52	27	11	19	8.5
With cleats						
104.016.003._*	C	17	9	4	11	1
125.020.004._*	D	22	14.5	5.5	8	0.9
125.025.007._*	D	28	14	5.5	9	1
125.030.010._*	D	32	14.5	6.5	10.5	1.2
125.040.013._*	D	42	20	7	13.5	2.1
125.050.017._*	D	53	27	12	17.5	2
154.078.027._*	E	78	55	--	13	3
154.113.028._*	E	113	80	--	20	5
154.155.026._*	E	155	109	--	24	5
Deep design						
122.016.012._*	F	17.5	9	4	17	8
122.022.022._*	F	22	14.5	5.5	13	8
122.032.036._*	F	32	14.5	5.5	19.5	14.4

* When ordering please add the appropriate material code to item no. You will find it on www.fipa.com.