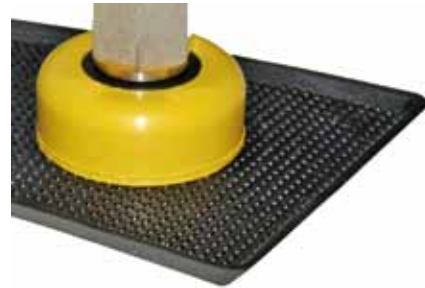




Series | Flat vacuum cups SF

Flat vacuum cups with a short stroke – SFK

Flat vacuum cups with a short stroke – SFK




Product description

Flat vacuum cups with a minimum stroke for flat surfaces. HNBR version especially suited for removing hot plastic parts from an injection molding machine, as they are silicone-free and temperature-resistant up to 160 °C (320 °F).
SFK-G series particularly suitable for clamping elements. Connection via a form-locking, snap-in aluminum plate.


Advantage

- > Great suction power thanks to the largest active vacuum suction surface possible
- > Minimized wear, as the suction lip does not slide over the product during suction
- > Low space requirement
- > Cost-effective replacement of worn seals

Technical data

Item no.	Model / Lip dimensions		Material / Colour	Usage temperature [°C (°F)]
	SFK-K			
102.020.458._*	SFK-K-20	0.5	HNBR (ge), NR (br)	0 - 160 (32 - 320)
102.030.459._*	SFK-K-30	0.8	HNBR (ge), NR (br)	0 - 160 (32 - 320)
102.045.460._*	SFK-K-45	1.2	HNBR (ge), NR (br)	0 - 160 (32 - 320)
	SFK-G			
154.065.003._*	SFK-G-65	3	NBR (sw), SI (w), NR (sw)	--
154.110.014._*	SFK-G-110	1.5	NBR (sw), SI (w)	--
154.150.021._*	SFK-G-150	2	NBR (sw), SI (w)	--

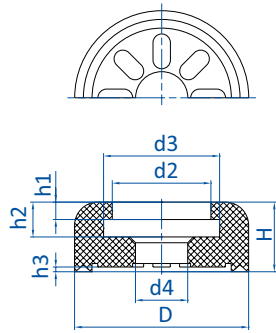
Accessories

Item no.	 Suitable fittings				
	M5-male	G1/8-female	G1/4-female	G3/8-female	G1/2-female
SFK-K					
102.020.458._*	270.521	--	--	--	--
102.030.459._*	--	270.234	--	--	--
102.045.460._*	--	270.235	--	--	--
SFK-G					
154.065.003._*	--	270.158	270.264	270.161	270.286
154.110.014._*	--	--	270.224	270.167	270.266
154.150.021._*	--	--	270.171	270.173	270.268

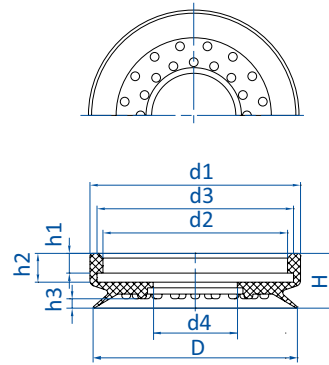
* When ordering please add the appropriate material code to item no. You will find it on www.fipa.com.



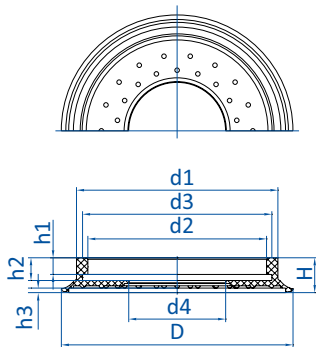
Dimensions



Drawing A



Drawing B



Drawing C

Item no.	Drawing	Ø D [mm]	Ø d1 [mm]	Ø d2 [mm]	Ø d3 [mm]	Ø d4 [mm]	H [mm]	h1 [mm]	h2 [mm]	h3 [mm]
SFK-K										
102.020.458._*	A	20	20	10	14	6.5	12	3	7	0.5
102.030.459._*	A	30	30	17	20	9	12	3	6	0.8
102.045.460._*	A	45	45	25	28	9	12	3.5	5.5	1.2
SFK-G										
154.065.003._*	B	65	67	59	63	27	17.5	6.3	9	3
154.110.014._*	C	114	96	88	91	53	17	8	11	1.2
154.150.021._*	C	153	133	118	125	64	23	11	15	3

* When ordering please add the appropriate material code to item no. You will find it on www.fipa.com.