



Series | Bellows vacuum cups SB

High temperature HNBR bellows cups, 1.5 folds – SKH-B1

High temperature HNBR bellows cups, 1.5 folds – SKH-B1

UP TO 160 °C (320 °F) &
MINIMUM MARKING




Product description

Bellows vacuum cups for uneven surfaces with suitability for removing hot plastic parts to be painted from an injection molding machine.


Advantage

- > Free of silicone and other paint-wetting-impairment substances (PWIS)
- > Minimum-marking
- > Bellows compensate differences in height and enable good adaptation to curved or uneven product surfaces

Technical data

| Item no. | Model / Lip dimensions |  | Number of folds | Material / Colour | Usage temperature [°C (°F)] |
|---------------|------------------------|---|-----------------|-------------------|-----------------------------|
| 23.005.178._* | SKH-B1-5 | 2 | 1.5 | HNBR (ge) | 0 - 160 (32 - 320) |
| 23.008.166._* | SKH-B1-8 | 3.5 | 1.5 | HNBR (ge) | 0 - 160 (32 - 320) |
| 23.011.008._* | SKH-B1-11 | 4.5 | 1.5 | HNBR (ge) | 0 - 160 (32 - 320) |
| 23.015.122._* | SKH-B1-15 | 5 | 1.5 | HNBR (ge) | -- |
| 23.016.016._* | SKH-B1-16 | 6 | 1.5 | HNBR (ge) | 0 - 160 (32 - 320) |
| 23.020.124._* | SKH-B1-20 | 8 | 1.5 | HNBR (ge) | -- |
| 23.030.125._* | SKH-B1-30 | 9 | 1.5 | HNBR (ge) | -- |
| 23.043.096._* | SKH-B1-43 | 12 | 1.5 | HNBR (ge) | 0 - 160 (32 - 320) |

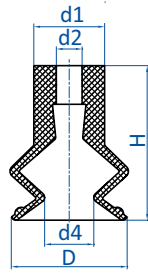
Accessories

| Item no. |  Suitable fittings | | | | | | |
|---------------|---|-----------|------------|-----------|-------------|-----------|-------------|
| | M5-male | M5-female | M6-male | G1/8-male | G1/8-female | G1/4-male | G1/4-female |
| 23.005.178._* | 270.153 | -- | -- | -- | -- | -- | -- |
| 23.008.166._* | 270.153 | -- | -- | -- | -- | -- | -- |
| 23.011.008._* | 270.013 | 270.005 | 270.103 | 270.003 | 270.015 | -- | -- |
| 23.015.122._* | 270.010 | 270.005 | -- | 270.009 | 270.007 | -- | -- |
| 23.016.016._* | 270.013 | 270.005 | 270.103 | 270.003 | 270.015 | -- | -- |
| 23.020.124._* | 270.311 | -- | -- | 270.063 | 270.061 | -- | -- |
| 23.030.125._* | -- | -- | 270.312/19 | 270.030 | 270.019 | 270.274 | 270.275 |
| 23.043.096._* | -- | -- | 270.315 | 270.196 | 270.114 | 270.190 | 270.192 |

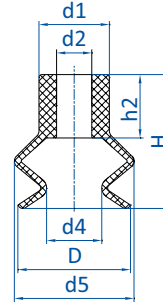
* When ordering please add the appropriate material code to item no. You will find it on www.fipa.com.



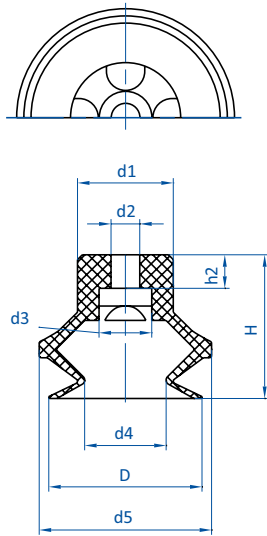
Dimensions



Drawing A



Drawing B



Drawing C

| Item no. | Drawing | Ø D [mm] | Ø d1 [mm] | Ø d2 [mm] | Ø d3 [mm] | Ø d4 [mm] | Ø d5 [mm] | H [mm] | h2 [mm] |
|---------------|---------|----------|-----------|-----------|-----------|-----------|-----------|--------|---------|
| 23.005.178._* | A | 6 | 5 | 2 | -- | 2.2 | -- | 9 | -- |
| 23.008.166._* | A | 9 | 5.5 | 2 | -- | 3.8 | -- | 12 | -- |
| 23.011.008._* | B | 12 | 10 | 5 | -- | 4.5 | 12 | 16 | 9 |
| 23.015.122._* | C | 15 | 8.5 | 3.6 | 6 | 8 | 17 | 16 | 1.7 |
| 23.016.016._* | B | 16 | 10 | 5 | -- | 8 | 17 | 19 | 9 |
| 23.020.124._* | C | 21.5 | 15 | 4.5 | 11 | 10 | 23.5 | 20 | 4.6 |
| 23.030.125._* | C | 32 | 20 | 6 | 11 | 17 | 36 | 30 | 7 |
| 23.043.096._* | B | 43 | 18 | 8 | -- | 23 | 45 | 27 | 12 |

* When ordering please add the appropriate material code to item no. You will find it on www.fipa.com.