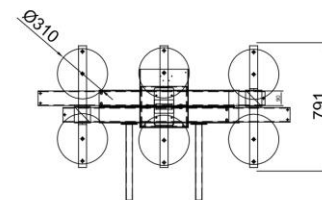
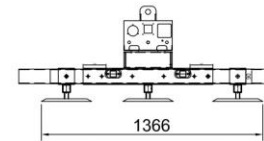
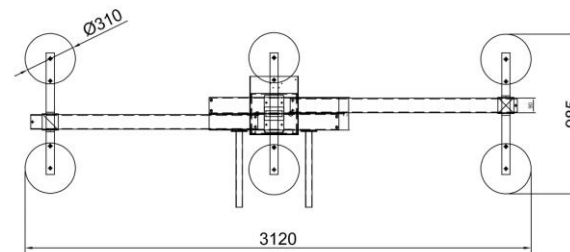
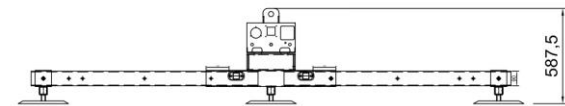


Vacuum Metal Sheet Lifter serie FTS6EB 1000

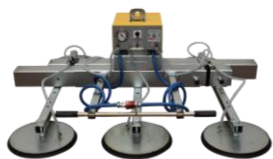


Technical specification

Application	Metal sheet, stainless steel, aluminum, plastic panels
Lifting capacity	1000 kg
Suction pads	No. 6 suction pads in vulcanized rubber, diameter 310 mm Suction pads with spring supports Exclusion of suction pads by cross arm
Frame	Steel TELESCOPIC frame structure fixed in horizontal position Telescopic frame that permits 3 different configuration Min 1366 mm – max 3120 mm The suction pads are distributed on three cross arms Adjustable position of suction pads on the arm
Operating system	Electric 400V 3 phase 50Hz or 220V 1 phase 50Hz > to specify at order
Vacuum system Safety systems	Vacuum circuit with vacuum reservoir, non-return valve, vacuum filter Vacuum gauge with colored scale Audio visual low vacuum warning powered independently and with back up battery
Weight of lifter	Depends on the configuration
Command	Suction and release by slide valve command with safety system The command valve is positioned on telescopic handle



- **Electric operating system**
- **Telescopic frame** from 1366 to 3120 mm
- **Telescopic handle**
- 6 suction pad d.310 mm
- fixed frame for horizontal lifting
- lifting capacity 1000 kg
- Safety devices



Telescopic handle

