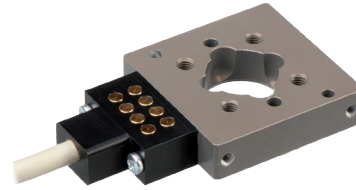




Electronic connectors for automatic quick-changers



Display with quick-change system – robot side



Display with quick-change system – gripper side

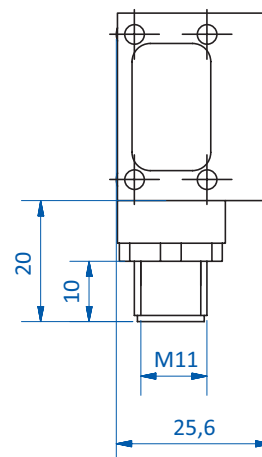
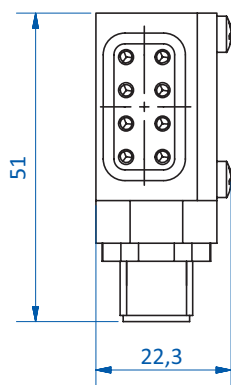
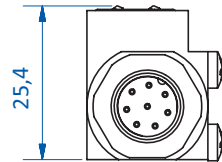
Product notes

- > Electronic modules for transmitting up to eight signals
- > Automatic electrical connection via spring loaded pins

Technical data

Item no.	Max. operating voltage [V]	Number of electrical channels	Max. current consumption [A]	Connection	Operating temperature [°C (°F)]	Weight [g]
ASR48-A-ME	60	8	2	M12	10 - 60 (50 - 140)	50
ASR48-B-ME	60	8	2	M12	10 - 60 (50 - 140)	20
ASR60-A-ME	60	8	2	M12	10 - 60 (50 - 140)	50
ASR60-B-ME	60	8	2	M12	10 - 60 (50 - 140)	20

Dimensions



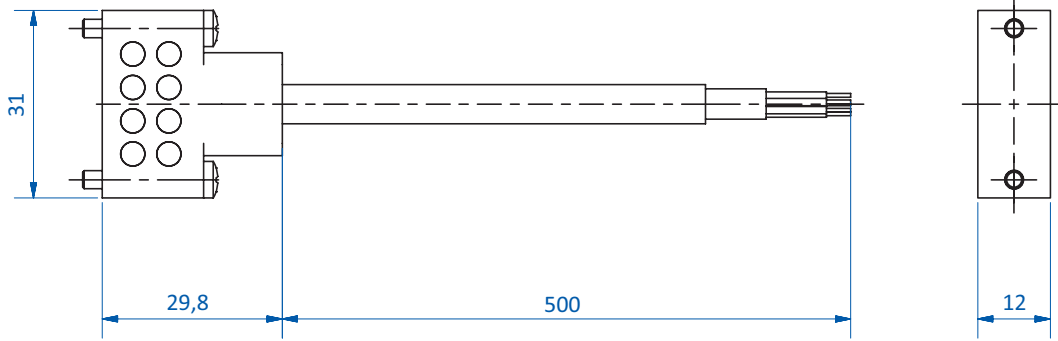
ASR48-A-ME



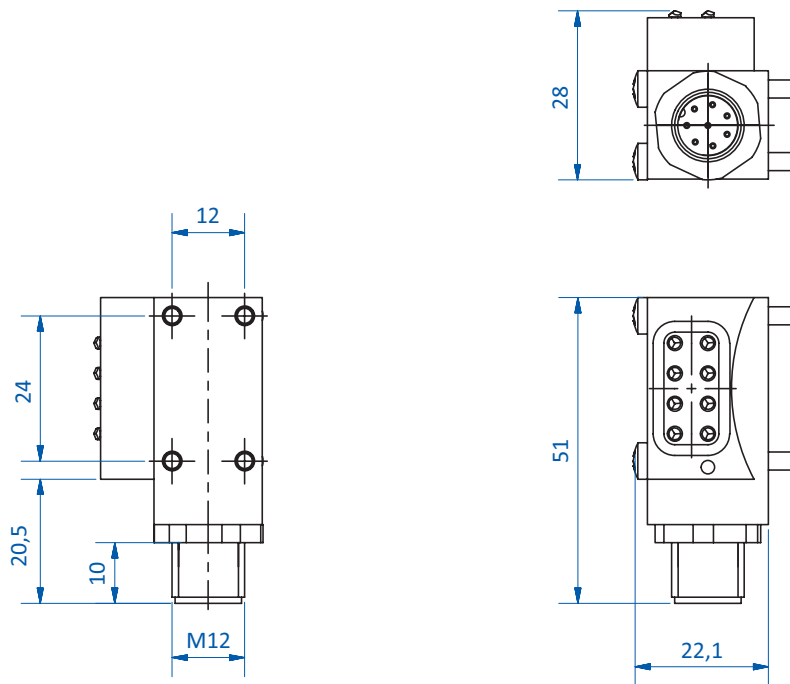
Quick-change systems | ASR Series

Electronic connectors for automatic quick-changers

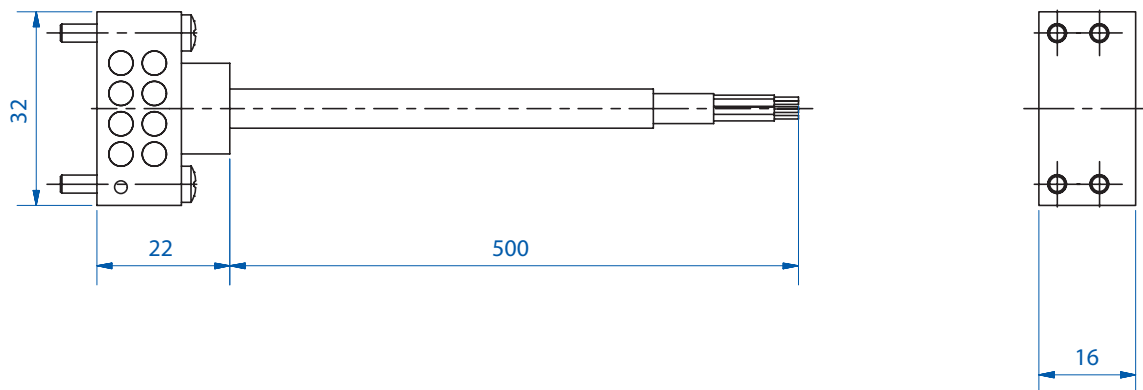
Dimensions



ASR48-B-ME



ASR60-A-ME



ASR60-B-ME