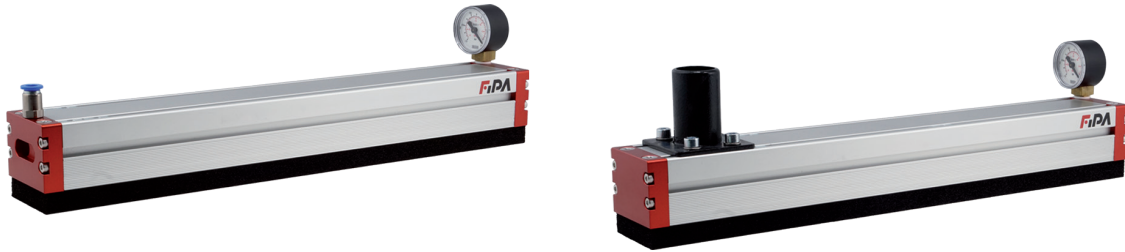


# Area gripper FSG 60

## Area gripper FSG 60 with sealing foam

### Area gripper FSG 60 with sealing foam



#### Product notes

- > For automated handling of individual products or product layers without changing grippers.
- > Especially for use in confined spaces
- > Low noise emissions for a pleasant working environment
- > With built-in ejectors or with connection to central vacuum supply
- > With check valves or flow resistors
- > The sealing foam can be replaced quickly, non-destructively and without leaving residues
- > Suitable for handling inherently stable products such as wood or glass

#### Technical data

Item no.	Valve type	Vacuum generation	Number of suction cells	Working pressure [bar (psi)]	Air consumption at 6 bar (87 psi) [Nl/min]	Suction power at 6 bar (87 psi) [Nl/min]	Nominal flow rate [Nl/min]	Suction force at nominal power [N]	Vacuum level [mbar (inHg)]	Weight [kg]	Dimensions
											A [mm]
<b>FSG.VG60.320.3F15C1</b>	Check valve	with integrated ejectors	45	4 - 6 (58 - 87)	100	350	--	243	-600 (-17.7)	1.4	320
<b>FSG.VG60.420.3F15C2</b>	Check valve	with integrated ejectors	60	4 - 6 (58 - 87)	200	700	--	324	-600 (-17.7)	1.6	420
<b>FSG.VG60.520.3F15C2</b>	Check valve	with integrated ejectors	75	4 - 6 (58 - 87)	200	700	--	405	-600 (-17.7)	1.8	520
<b>FSG.VG60.720.3F15C2</b>	Check valve	with integrated ejectors	105	4 - 6 (58 - 87)	200	700	--	567	-600 (-17.7)	2.3	720
<b>FSG.VG60.820.3F15C2</b>	Check valve	with integrated ejectors	120	4 - 6 (58 - 87)	200	700	--	648	-600 (-17.7)	2.5	820
<b>FSG.VG60.1020.3F15C3</b>	Check valve	with integrated ejectors	150	4 - 6 (58 - 87)	300	1,050	--	811	-600 (-17.7)	3	1,020
<b>FSG.VG60.1120.3F15C3</b>	Check valve	with integrated ejectors	165	4 - 6 (58 - 87)	300	1,050	--	892	-600 (-17.7)	3.2	1,120
<b>FSG.VG60.1220.3F15C3</b>	Check valve	with integrated ejectors	180	4 - 6 (58 - 87)	300	1,050	--	973	-600 (-17.7)	3.4	1,220
<b>FSG.PG60.320.3F15C1</b>	Flow reduction	with integrated ejectors	45	4 - 6 (58 - 87)	100	350	--	243	-600 (-17.7)	1.4	320
<b>FSG.PG60.420.3F15C2</b>	Flow reduction	with integrated ejectors	60	4 - 6 (58 - 87)	200	700	--	324	-600 (-17.7)	1.6	420
<b>FSG.PG60.520.3F15C2</b>	Flow reduction	with integrated ejectors	75	4 - 6 (58 - 87)	200	700	--	405	-600 (-17.7)	1.8	520
<b>FSG.PG60.720.3F15C2</b>	Flow reduction	with integrated ejectors	105	4 - 6 (58 - 87)	200	700	--	567	-600 (-17.7)	2.3	720
<b>FSG.PG60.820.3F15C2</b>	Flow reduction	with integrated ejectors	120	4 - 6 (58 - 87)	200	700	--	648	-600 (-17.7)	2.5	820
<b>FSG.PG60.1020.3F15C3</b>	Flow reduction	with integrated ejectors	150	4 - 6 (58 - 87)	300	1,050	--	811	-600 (-17.7)	3	1,020
<b>FSG.PG60.1120.3F15C3</b>	Flow reduction	with integrated ejectors	165	4 - 6 (58 - 87)	300	1,050	--	892	-600 (-17.7)	3.2	1,120

# Area gripper FSG 60

## Area gripper FSG 60 with sealing foam

### Technical data

Item no.	Valve type	Vacuum generation	Number of suction cells	Working pressure [bar (psi)]	Air consumption at 6 bar (87 psi) [NI/min]	Suction power at 6 bar (87 psi) [NI/min]	Nominal flow rate [NI/min]	Suction force at nominal power [N]	Vacuum level [mbar (inHg)]	Weight [kg]	Dimensions
											A [mm]
<b>FSG.PG60.1220.3F15C3</b>	Flow reduction	with integrated ejectors	180	4 - 6 (58 - 87)	300	1,050	--	973	-600 (-17.7)	3.4	1,220
<b>FSG.VG60.320.3F15T</b>	Check valve	central vacuum supply	45	--	--	--	150	162	-400 (-11.8)	1	320
<b>FSG.VG60.420.3F15T</b>	Check valve	central vacuum supply	60	--	--	--	300	216	-400 (-11.8)	1.2	420
<b>FSG.VG60.520.3F15T</b>	Check valve	central vacuum supply	75	--	--	--	390	270	-400 (-11.8)	1.4	520
<b>FSG.VG60.720.3F15T</b>	Check valve	central vacuum supply	105	--	--	--	510	378	-400 (-11.8)	1.9	720
<b>FSG.VG60.820.3F15T</b>	Check valve	central vacuum supply	120	--	--	--	560	432	-400 (-11.8)	2.1	820
<b>FSG.VG60.1020.3F15T</b>	Check valve	central vacuum supply	150	--	--	--	750	540	-400 (-11.8)	2.6	1,020
<b>FSG.VG60.1120.3F15T</b>	Check valve	central vacuum supply	165	--	--	--	900	594	-400 (-11.8)	2.8	1,120
<b>FSG.VG60.1220.3F15T</b>	Check valve	central vacuum supply	180	--	--	--	900	648	-400 (-11.8)	3.1	1,220
<b>FSG.PG60.320.3F15T</b>	Flow reduction	central vacuum supply	45	--	--	--	150	162	-400 (-11.8)	1	320
<b>FSG.PG60.420.3F15T</b>	Flow reduction	central vacuum supply	60	--	--	--	300	216	-400 (-11.8)	1.2	420
<b>FSG.PG60.520.3F15T</b>	Flow reduction	central vacuum supply	75	--	--	--	390	270	-400 (-11.8)	1.4	520
<b>FSG.PG60.720.3F15T</b>	Flow reduction	central vacuum supply	105	--	--	--	510	378	-400 (-11.8)	1.9	720
<b>FSG.PG60.820.3F15T</b>	Flow reduction	central vacuum supply	120	--	--	--	560	432	-400 (-11.8)	2.1	820
<b>FSG.PG60.1020.3F15T</b>	Flow reduction	central vacuum supply	150	--	--	--	750	540	-400 (-11.8)	2.6	1,020
<b>FSG.PG60.1120.3F15T</b>	Flow reduction	central vacuum supply	165	--	--	--	900	594	-400 (-11.8)	2.8	1,120
<b>FSG.PG60.1220.3F15T</b>	Flow reduction	central vacuum supply	180	--	--	--	900	648	-400 (-11.8)	3.1	1,220

### Optional accessories and spare parts

Optional accessories:

- > Electronic vacuum switch with display GS02.001
- > Electronic vacuum switch GS02.003
- > Electronic vacuum and pressure switch 20.026

>

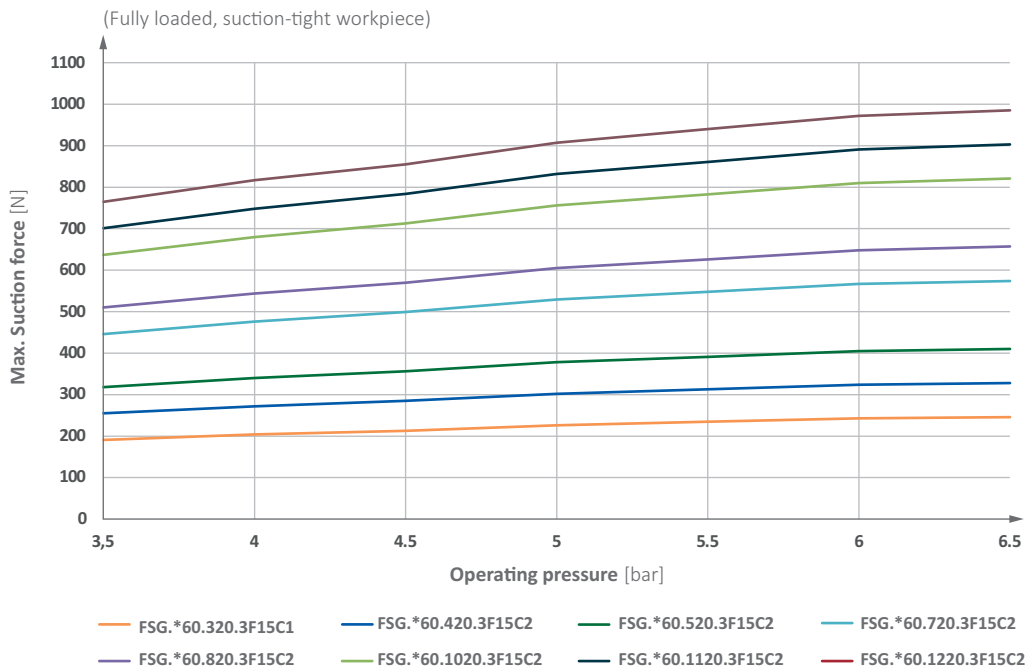
Spare parts:

- > Cartridge ejector for area gripper FSG.ACC130.0003

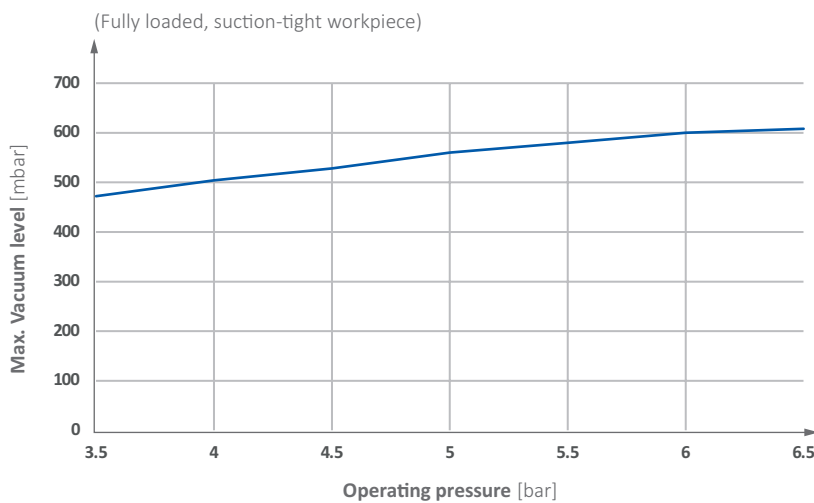
# Area gripper FSG 60

Area gripper FSG 60 with sealing foam

## Max. Suction force as a function of operating pressure



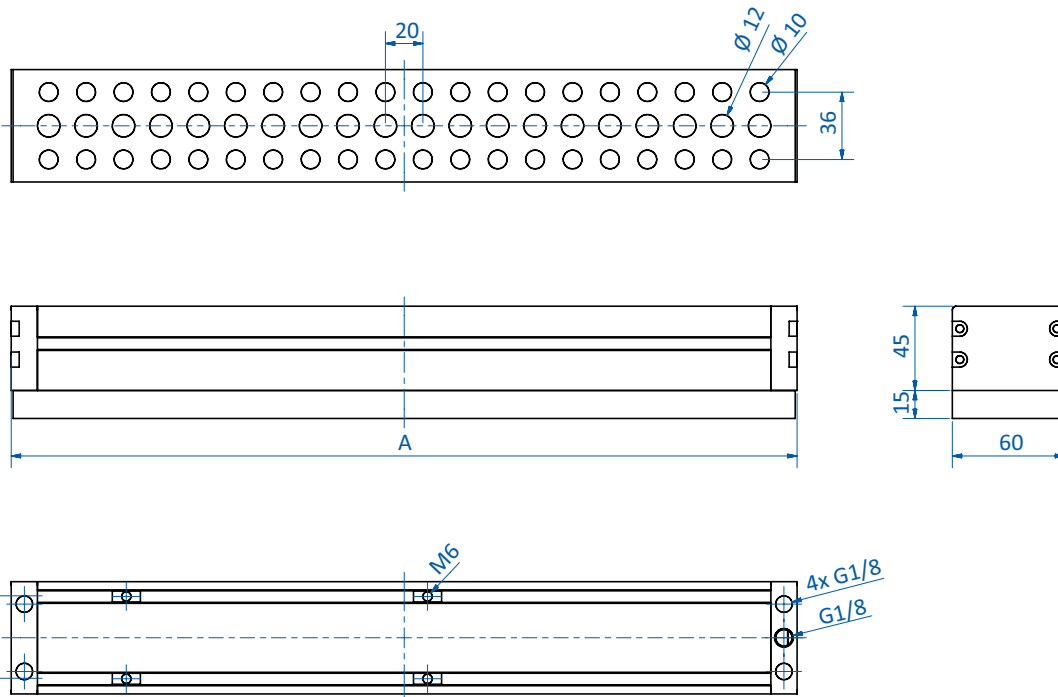
## Max. Vacuum level above operating pressure



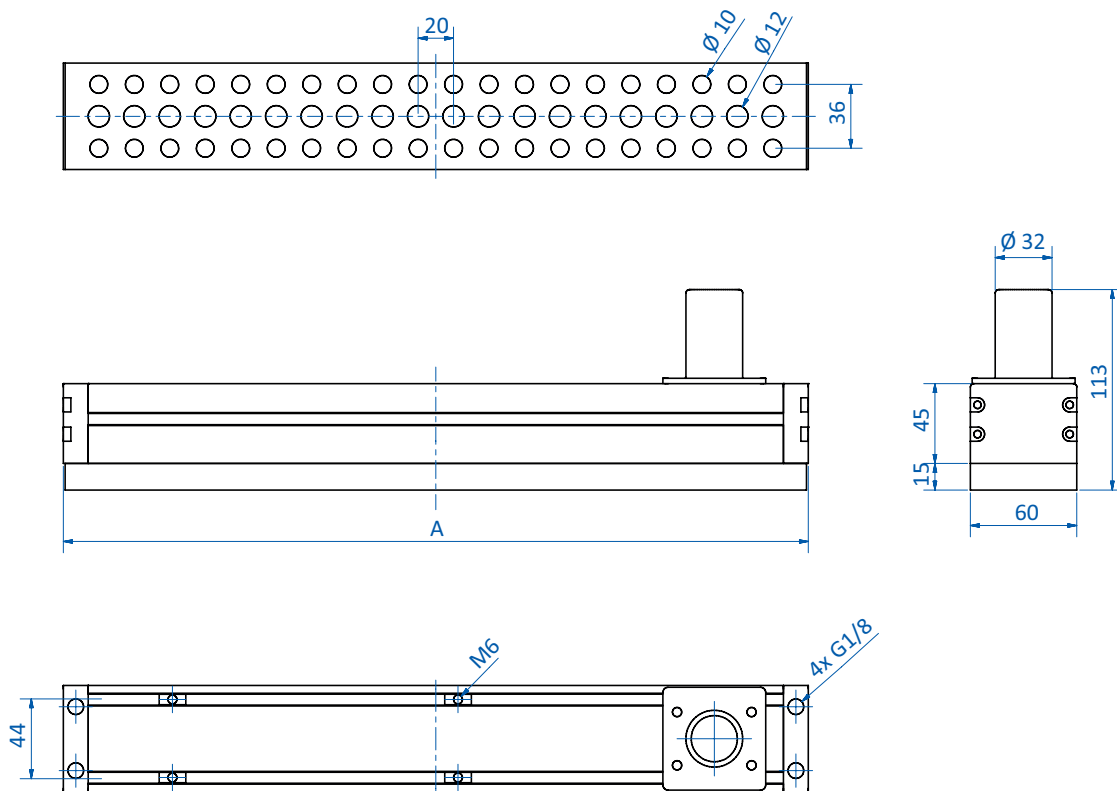
# Area gripper FSG 60

Area gripper FSG 60 with sealing foam

## Dimensions



FSG.VG60.320.3F15C1 | FSG.VG60.420.3F15C2 | FSG.VG60.520.3F15C2 | FSG.VG60.720.3F15C2 | FSG.VG60.820.3F15C2 | FSG.VG60.1020.3F15C3 | FSG.VG60.1120.3F15C3 | FSG.VG60.1220.3F15C3 | FSG.PG60.320.3F15C1 | FSG.PG60.420.3F15C2 | FSG.PG60.520.3F15C2 | FSG.PG60.720.3F15C2 | FSG.PG60.820.3F15C2 | FSG.PG60.1020.3F15C3 | FSG.PG60.1120.3F15C3 | FSG.PG60.1220.3F15C3



FSG.VG60.320.3F15T | FSG.VG60.420.3F15T | FSG.VG60.520.3F15T | FSG.VG60.720.3F15T | FSG.VG60.820.3F15T | FSG.VG60.1020.3F15T | FSG.VG60.1120.3F15T | FSG.VG60.1220.3F15T | FSG.PG60.320.3F15T | FSG.PG60.420.3F15T | FSG.PG60.520.3F15T | FSG.PG60.720.3F15T | FSG.PG60.820.3F15T | FSG.PG60.1020.3F15T | FSG.PG60.1120.3F15T | FSG.PG60.1220.3F15T