

# System holder SH Line

Unique feature: Foldable and pivotable mechanism for fewer interfering contours and more flexibility during installation

New



High durability



Increased wear resistance



Dimensional stability



Free of halogens and cadmium/acc. to DIN 53474



High mechanical strength



Flexible and easy maintenance



Resistant to chemicals

## Material characteristics

System holder Glass fiber reinforced polyamide6 (PA 6 GF 30)

Color / layer Black

## Characteristics

Category	Unit	Value
----------	------	-------

### Mechanical characteristics

Tensile modulus	MPa	9.100
Tear resistance	MPa	175
Notched impact strength	kJ/m <sup>2</sup>	10
Flexural strength	MPa	260

### Flammability characteristics

Fire performance mm/min HB acc. to UL94

### Thermal characteristics

Continuous operating temperature	°C	80 - 120
Melting temperature	°C	+ 223

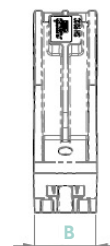
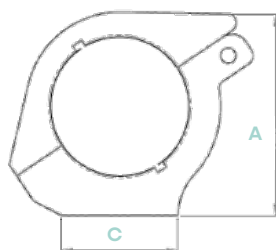
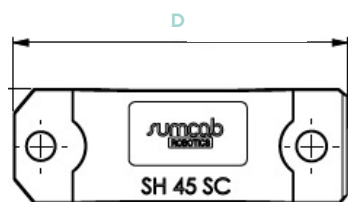
### Environmental characteristics

RoHS- and REACH-conform	Yes
Free of halogens acc. to DIN 53474	Yes
Free from paint wetting impairment substances (e.g. silicone)	Yes

### Weathering resistance

Weathering (UV/humidity) Very good

## Dimensions



Article name	Article number	Tube diameter (I.D.)	Suitable corrugated tubes	Dimensions mm (nom.)			
				A	B	C	D
SH 45SC	91.205.060.020.450	45	NW29	68	25,5	40	75,2
SH 70SC	91.205.060.020.700	70	NW36 / NW48	94	31	70	118,8
SH 90SC	91.205.060.020.900	90	NW70	120	37	70	158,6
SH 110SC	91.205.060.020.110	110	NW70	152	43	70	177



Follow us



**Sumotex**  
Sumcab Motion Textile  
[www.sumcab.de](http://www.sumcab.de)

