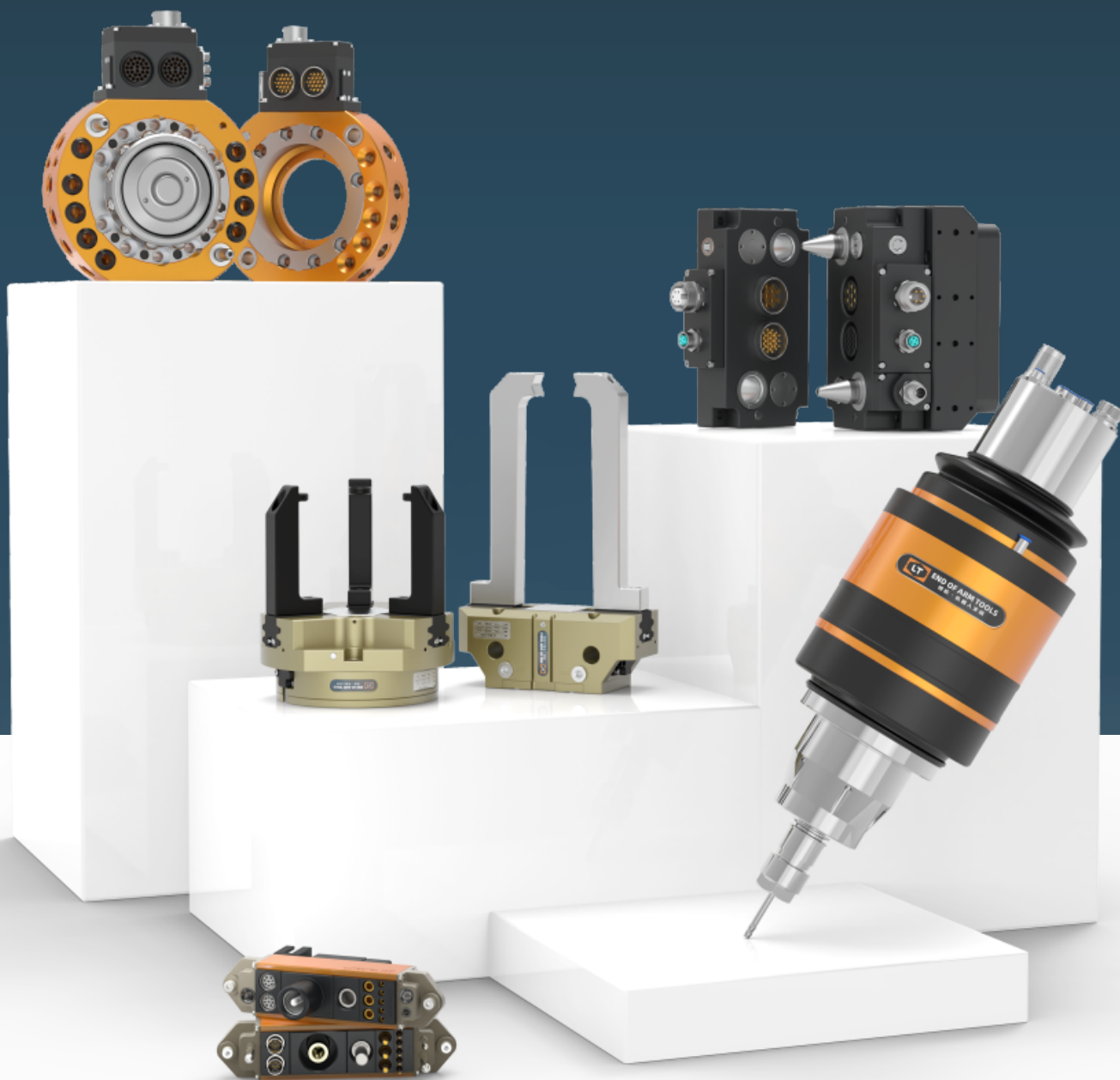




领航 · 机器人末端
End Of Arm Tools

LT Products Overview

Stable Safe Efficient Excellent



ZHENGZHOU LINGHANG ROBOT CO.,LTD





Company Profile

Zhengzhou Linghang Robot Co.,Ltd with brand name "LT" (mentioned as "LT" afterwards), was founded in year 2015, with registered capital of RMB 22 millions, listed in Zhongyuan stock exchange Market(stock code 200649), located in No.11 Building, Zhengtuo technology Innovation park, Mazhai industrial development zone, Erqi district, Zhengzhou, China. LT has a professional independent research and development team and a modern intelligent production factory, is a national high-tech enterprise which integrated design, production, sales and service as a whole concept.

LT has several offices in South China, East China, Center China, Northeast China, Southwest China, and has agents and dealers in Europe, South America, Southeast Asia, the products has exported to more than 30 countries and regions.

LT has been awarded honorary titles of National high technology enterprise, Henan science and technology enterprise, Zhengzhou Specialized and special New Enterprise, the products have passed ISO9001 quality system certification, CE and SIL safety certifications. LT has gained more than 60 patents and 5 copyrights.

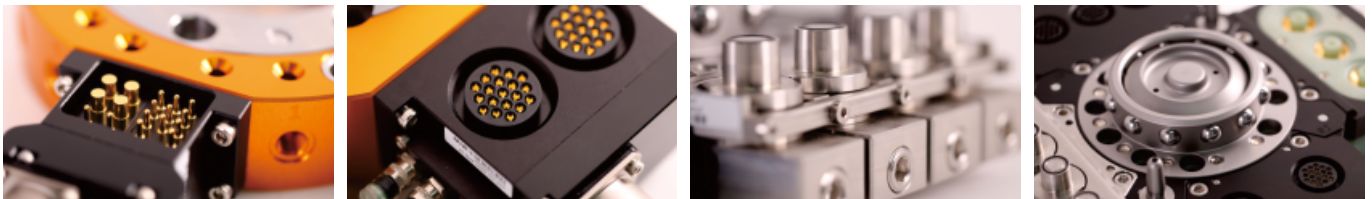
LT main products are robot tool quick change system, welding tool changer, energy connector, floating material removal tool and pneumatic gripper, can offer unlimited tool change solutions for robot applications, and then improve robot's product efficiency and safety. They are widely used in industrial sites such as automatic spot welding, automatic handling, assembly, deburring, palletizing ,etc.

-  **Company Vision:** Committed to becoming the world's best robot terminal equipment provider
-  **Company mission:** Keep the original intention of craftsmen, help Chinese intelligence manufacturing to release human labor
-  **Company spirit:** Innovation, Excellence, Efficiency, Focus
-  **Team Concept:** Treat with sincerity, do with truth



Robot Tool Changer

LT · tool changer is a flexible device which can help single industrial robot match with more end-effectors, each robot side can match with more tool sides, increase robot production lines' flexibility and utilization of robots. It's widely used in end-of-arm-tools switching, such as spot welding torches, end-effectors, grippers, press guns, deburring removal tools, visible tools, Ultrasonic welding guns ,etc.



Locking mechanism

Patent material and produce process connect with the special angle structure perfectly, make locking to be safe.

Redundancy technology

Innovated RD connection technology, make the data and signal transfer more stable.

Fluid module

Excellent fluid connection technology realize millions operation without leak.

Safety docking

Unique patented technology of tool and bracket interlocking, when tool changer operate normally, the tool changer won't open even industrial robots output order mistakenly to solenoid valve module.



Model: LTC-0005A

- ◆ Recommended payload $\leq 5\text{KG}$
- ◆ Locking force: 770N
- ◆ Allowable static moment: 13.2N·m
- ◆ Allowable static torque: 18N·m
- ◆ With 4 x M5 air ports, 1 available module interface



Model: LTC-0010E

- ◆ Recommended payload $\leq 10\text{KG}$
- ◆ Locking force: 1193N
- ◆ Allowable static moment: 26.5N·m
- ◆ Allowable static torque: 35.7N·m
- ◆ With 4 x M5 air ports, 2 available module interfaces
- ◆ Master plate with locking/unlocking sensor and tool-in-position sensor



Model: LTC-0010F

- ◆ Recommended payload ≤ 10KG
- ◆ Locking force: 1193N
- ◆ Allowable static moment: 26.5N·m
- ◆ Allowable static torque: 35.7N·m
- ◆ With 6 x M5 air ports, 2 available module interfaces



Model: LTC-0020D

- ◆ Recommended payload ≤ 20KG
- ◆ Locking force: 2514N
- ◆ Allowable static moment: 58.6N·m
- ◆ Allowable static torque: 80N·m
- ◆ With 12 x M5 air ports, 4 available module interfaces
- ◆ Master plate with locking/unlocking sensor and tool-in-position sensor



Model: LTC-0020E

- ◆ Recommended payload ≤ 20KG
- ◆ Locking force: 2514N
- ◆ Allowable static moment: 58.6N·m
- ◆ Allowable static torque: 80N·m
- ◆ With 12 x M5 air ports, 4 available module interfaces



Model: LTC-0040A

- ◆ Recommended payload ≤ 40KG
- ◆ Locking force: 7497N
- ◆ Allowable static moment: 216N·m
- ◆ Allowable static torque: 228N·m
- ◆ With 8 x PT1/8 air ports, 2 available module interfaces
- ◆ Master plate with locking/unlocking sensor and tool-in-position sensor



Model: LTC-0070A

- ◆ Recommended payload ≤ 70KG
- ◆ Locking force: 9973N
- ◆ Allowable static moment: 328.5N·m
- ◆ Allowable static torque: 451N·m
- ◆ With 8 x PT1/8 air ports, 2 available module interfaces
- ◆ Master plate with locking/unlocking sensor and tool-in-position sensor



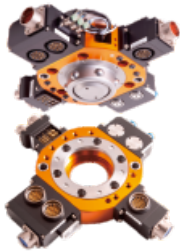
Model: LTC-0070B

- ◆ Recommended payload $\leq 70\text{KG}$
- ◆ Locking force: 9973N
- ◆ Allowable static moment: 328.5N·m
- ◆ Allowable static torque: 451N·m
- ◆ With 6 x PT1/8 air ports, 4 available module interfaces
- ◆ Master plate with locking/unlocking sensor and tool-in-position sensor



Model: LTC-0120C

- ◆ Recommended payload $\leq 120\text{KG}$
- ◆ Locking force: 15407N
- ◆ Allowable static moment: 842N·m
- ◆ Allowable static torque: 1200N·m
- ◆ With 10 x PT1/8 air ports, 2 available module interfaces
- ◆ Master plate with locking/unlocking sensor and tool-in-position sensor



Model: LTC-0120D

- ◆ Recommended payload $\leq 120\text{KG}$
- ◆ Locking force: 15407N
- ◆ Allowable static moment: 842N·m
- ◆ Allowable static torque: 1200N·m
- ◆ With 8 x PT1/8 air ports, 4 available module interfaces
- ◆ Master plate with locking/unlocking sensor and tool-in-position sensor



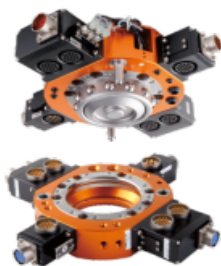
Model: LTC-0200D

- ◆ Recommended payload $\leq 230\text{KG}$
- ◆ Locking force: 31458N
- ◆ Allowable static moment: 2260N·m
- ◆ Allowable static torque: 2245N·m
- ◆ With 9 x PT3/8 air ports, 2 available module interfaces
- ◆ Master plate with locking/unlocking sensor and tool-in-position sensor



Model: LTC-0200E

- ◆ Recommended payload $\leq 230\text{KG}$
- ◆ Locking force: 31458N
- ◆ Allowable static moment: 2260N·m
- ◆ Allowable static torque: 2245N·m
- ◆ With 18 x PT1/8 air ports, 2 available module interfaces
- ◆ Master plate with locking/unlocking sensor and tool-in-position sensor



Model: LTC-0200F

- ◆ Recommended payload ≤ 230KG
- ◆ Locking force: 31458N
- ◆ Allowable static moment: 2260N·m
- ◆ Allowable static torque: 2245N·m
- ◆ With 6 x PT1/8 air ports, 2 x PT3/8 air ports, 4 available module interfaces
- ◆ Master plate with locking/unlocking sensor and tool-in-position sensor



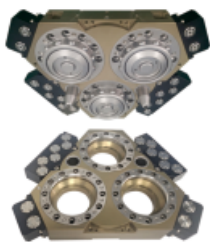
Model: LTC-0300G

- ◆ Recommended payload ≤ 300KG
- ◆ Locking force: 35421N
- ◆ Allowable static moment: 2767N·m
- ◆ Allowable static torque: 2526N·m
- ◆ With 10 x PT3/8 air ports, 2 available module interfaces
- ◆ Master plate with locking/unlocking sensor and tool-in-position sensor



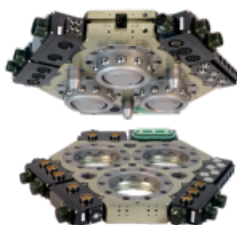
Model: LTC-0630F

- ◆ Recommended payload ≤ 650KG
- ◆ Locking force: 72930N
- ◆ Allowable static moment: 5000N·m
- ◆ Allowable static torque: 5000N·m
- ◆ 4 available module interfaces
- ◆ Master plate with locking/unlocking sensor and tool-in-position sensor



Model: LTC-1300A

- ◆ Recommended payload ≤ 1300KG
- ◆ Locking force: 106263N
- ◆ Allowable static moment: 6830N·m
- ◆ Allowable static torque: 6920N·m
- ◆ 6 available module interfaces
- ◆ Master plate with locking/unlocking sensor and tool-in-position sensor









Model: LTC-3000A

- ◆ Recommended payload ≤ 3000KG
- ◆ Locking force: 130200N
- ◆ Allowable static moment: 13600N·m
- ◆ Allowable static torque: 13000N·m
- ◆ 6 available module interfaces
- ◆ Master plate with locking/unlocking sensor and tool-in-position sensor

Pneumatic Gripper

Pneumatic gripper is one of end-effectors which takes compressed air as power to clamp or grab workpieces, can replace human hand, used to catch workpiece with different shapes, measurements, weights and materials, to combine grabbing force and grabbing stroke perfectly and then improve the stability of production process.

					
LT technology high strength mechanism grippers	Trapezoidal skeleton structure, stronger resistance to deformation	Multi-tooth guide rail design provides greater clamping force	Sensitive sensing block in sensors flexible perception of fingers operation	Unique self-lubrication design, longer service life with maintenance-free	More than 400 combinations of function expansion



LT Two-finger parallel mechanical gripper



Model: LT-PG2-80series

- ◆ Stroke per jaw: 4mm/8mm
- ◆ Closing force: 400N~1520N
- ◆ Recommended workpiece weight: 2kg~7.6kg
- ◆ The allowed longest fingers: 80mm~110mm
- ◆ The allowed heaviest fingers: 0.6kg
- ◆ Optional basic type, force holding type, strength enhance type, dust-proof type, high temperature type, etc.



Model: LT-PG2-100series

- ◆ Stroke per jaw: 5mm/10mm
- ◆ Closing force: 640N~2520N
- ◆ Recommended workpiece weight: 3.2kg~12.6kg
- ◆ The allowed longest fingers: 100mm~145mm
- ◆ The allowed heaviest fingers: 1.1kg
- ◆ Optional basic type, force holding type, strength enhance type, dust-proof type, high temperature type, etc.



Model: LT-PG2-125series

- ◆ Stroke per jaw: 6.5mm/13mm
- ◆ Closing force: 1050N~4120N
- ◆ Recommended workpiece weight: 5.3kg~20.6kg
- ◆ The allowed longest fingers: 125mm~180mm
- ◆ The allowed heaviest fingers: 2.1kg
- ◆ Optional basic type, force holding type, strength enhance type, dust-proof type, high temperature type, etc.



Model: LT-PG2-160series

- ◆ Stroke per jaw: 8mm/16mm
- ◆ Closing force: 1610N~6060N
- ◆ Recommended workpiece weight: 8kg~30kg
- ◆ The allowed longest fingers: 125mm~220mm
- ◆ The allowed heaviest fingers: 3.5kg
- ◆ Optional basic type, force holding type, strength enhance type, dust-proof type, high temperature type, etc.



Model: LT-PG2-200series

- ◆ Stroke per jaw: 14mm/25mm
- ◆ Closing force: 2680N~9140N
- ◆ Recommended workpiece weight: 13.4kg~45.7kg
- ◆ The allowed longest fingers: 160mm~280mm
- ◆ The allowed heaviest fingers: 6.5kg
- ◆ Optional basic type, force holding type, strength enhance type, dust-proof type, high temperature type, etc.



Model: LT-PG2-240series

- ◆ Stroke per jaw: 17mm/30mm
- ◆ Closing force: 3880N~8540N
- ◆ Recommended workpiece weight: 19.4kg~33kg
- ◆ The allowed longest fingers: 240mm~320mm
- ◆ The allowed heaviest fingers: 8.5kg
- ◆ Optional basic type, force holding type, dust-proof type, high temperature type, etc.



Model: LT-PG2-300series

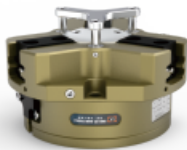
- ◆ Stroke per jaw: 20mm/35mm
- ◆ Closing force: 5260N~11400N
- ◆ Recommended workpiece weight: 26kg~45kg
- ◆ The allowed longest fingers: 250mm~350mm
- ◆ The allowed heaviest fingers: 11.5kg
- ◆ Optional basic type, force holding type, dust-proof type, high temperature type, etc.



Model: LT-PG2-380series

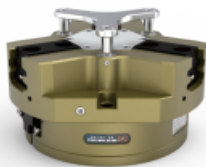
- ◆ Stroke per jaw: 26mm/45mm
- ◆ Closing force: 8700N~20700N
- ◆ Recommended workpiece weight: 43.5kg~74kg
- ◆ The allowed longest fingers: 300mm~400mm
- ◆ The allowed heaviest fingers: 17kg
- ◆ Optional basic type, force holding type, dust-proof type, high temperature type, etc.

LT Three-point centering mechanical gripper



Model: LT-PG3-80series

- ◆ Stroke per jaw: 4mm/8mm
- ◆ Closing force: 990N~3780N
- ◆ Recommended workpiece weight: 4.9kg~18.9kg
- ◆ The allowed longest fingers: 80mm~110mm
- ◆ The allowed heaviest fingers: 0.6kg
- ◆ Optional basic type, force holding type, strength enhance type, dust-proof type, high temperature type, scrap wing components, etc.



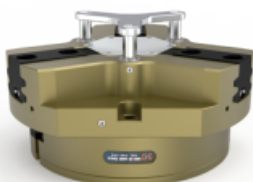
Model: LT-PG3-100series

- ◆ Stroke per jaw: 5mm/10mm
- ◆ Closing force: 1850N~7260N
- ◆ Recommended workpiece weight: 9.2kg~36kg
- ◆ The allowed longest fingers: 80mm~145mm
- ◆ The allowed heaviest fingers: 1.1kg
- ◆ Optional basic type, force holding type, strength enhance type, dust-proof type, high temperature type, scrap wing components, etc.



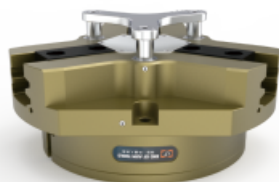
Model: LT-PG3-125series

- ◆ Stroke per jaw: 6.5mm/13mm
- ◆ Closing force: 2930N~11500N
- ◆ Recommended workpiece weight: 14.6kg~57.5kg
- ◆ The allowed longest fingers: 100mm~180mm
- ◆ The allowed heaviest fingers: 2.1kg
- ◆ Optional basic type, force holding type, strength enhance type, dust-proof type, high temperature type, scrap wing components, etc.



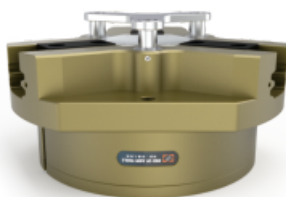
Model: LT-PG3-160series

- ◆ Stroke per jaw: 8mm/16mm
- ◆ Closing force: 5400N~20320N
- ◆ Recommended workpiece weight: 27kg~101kg
- ◆ The allowed longest fingers: 100mm~220mm
- ◆ The allowed heaviest fingers: 3.5kg
- ◆ Optional basic type, force holding type, strength enhance type, dust-proof type, high temperature type, scrap wing components, etc.



Model: LT-PG3-200series

- ◆ Stroke per jaw: 14mm/25mm
- ◆ Closing force: 7400N~17320N
- ◆ Recommended workpiece weight: 37kg~63kg
- ◆ The allowed longest fingers: 200mm~280mm
- ◆ The allowed heaviest fingers: 6.5kg
- ◆ Optional basic type, force holding type, dust-proof type, high temperature type, scrap wing components, etc.



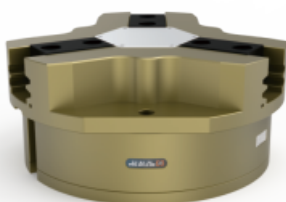
Model: LT-PG3-240series

- ◆ Stroke per jaw: 17mm/30mm
- ◆ Closing force: 10700N~25500N
- ◆ Recommended workpiece weight: 53kg~91kg
- ◆ The allowed longest fingers: 200mm~300mm
- ◆ The allowed heaviest fingers: 8.5kg
- ◆ Optional basic type, force holding type, dust-proof type, high temperature type, scrap wing components, etc.



Model: LT-PG3-300series

- ◆ Stroke per jaw: 20mm/35mm
- ◆ Closing force: 14400N~35600N
- ◆ Recommended workpiece weight: 72kg~123kg
- ◆ The allowed longest fingers: 200mm~250mm
- ◆ The allowed heaviest fingers: 11.5kg
- ◆ Optional basic type, force holding type, dust-proof type, high temperature type, scrap wing components, etc.



Model: LT-PG3-380series

- ◆ Stroke per jaw: 26mm/45mm
- ◆ Closing force: 26250N~56200N
- ◆ Recommended workpiece weight: 131kg~224kg
- ◆ The allowed longest fingers: 200mm~250mm
- ◆ The allowed heaviest fingers: 13.5kg
- ◆ Optional basic type, force holding type, dust-proof type, high temperature type, etc.

Floating Material Removal Tool

LT force-controlled Floating Material Removal tool is an efficient and flexible automatically deburring tool, equipped with powerful electric motor, it can quickly and automatically remove burrs, seams and edge -breaking of various materials. Applied in multi-process, suitable for components with materials such as cast iron, steel, aluminum alloy, plastic, etc. Under operation condition, the floating mechanism and the cutter can comply the irregular workpiece burrs and conduct adaptive processing, avoid the damage of the cutter and the workpiece, eliminate the error of workpiece shape and positioning.

					
Flexible contact, adjustable rotate speed	360 degree floating in Radial direction, floating in axial direction	Durable contact component, dust-proof, air leakage proof	Aluminum alloy shell, light weight design	Build-in steel ball to reduce friction and lengthen service life	Replaceable Variety grinding heads, meet customized deburring requirement

Radial floating tools replaceable series



Model: LT-FRC030B-3060

- ◆ The Max rotate speed: 60000rpm
- ◆ The max torque: 9cN·m
- ◆ Floating force: 7N~30N
- ◆ Axial floating distance: 7mm
- ◆ Radial floating angle 360-degree, Floating angle (X, Y) $\pm 5^\circ$
- ◆ Support replaceable cutters automatically, Replaceable tool holder diameter 0.5mm~6.35mm
- ◆ Power: 350W



Model: LT-FRC030B-3030T

- ◆ The Max rotate speed: 30000rpm
- ◆ The max torque: 18cN·m
- ◆ Floating force: 7N~30N
- ◆ Axial floating distance: 7mm
- ◆ Radial floating angle 360-degree, Floating angle (X, Y) $\pm 5^\circ$
- ◆ Support replaceable cutters automatically, Replaceable tool holder diameter 0.5mm~6.35mm
- ◆ Power: 350W

Radial floating tools series



Model: LT-FR020A-20-S6000

- ◆ The Max rotate speed: 60000rpm
- ◆ The max torque: 9cN·m
- ◆ Power: 250W
- ◆ Floating force: 3N~14N
- ◆ Axial floating distance: 4mm
- ◆ Radial floating angle 360-degree, Floating angle (X, Y) $\pm 5^\circ$



Model: LT-FR030B-3060

- ◆ The Max rotate speed: 60000rpm
- ◆ The max torque: 9cN·m
- ◆ Power: 350W
- ◆ Floating force: 7N~30N
- ◆ Axial floating distance: 5mm
- ◆ Radial floating angle 360-degree, Floating angle (X, Y) $\pm 5^\circ$



Model: LT-FR030B-3030T

- ◆ The Max rotate speed: 30000rpm
- ◆ The max torque: 18cN·m
- ◆ Power: 350W
- ◆ Floating force: 7N~30N
- ◆ Axial floating distance: 5mm
- ◆ Radial floating angle 360-degree, Floating angle (X, Y) $\pm 5^\circ$



Model: LT-FR040B-S4040

- ◆ The Max rotate speed: 20000rpm
- ◆ The max torque: 60cN·m
- ◆ Power: 400W
- ◆ Floating force: 7N~29N
- ◆ Axial floating distance: 6.5mm
- ◆ Radial floating angle 360-degree, Floating angle (X, Y) $\pm 5^\circ$



Model: LT-6000

- ◆ The Max rotate speed: 36000rpm
- ◆ The max torque: 2.8N·m
- ◆ Power: 6KW
- ◆ Floating force: 96N~203.8N
- ◆ Axial floating distance: 10mm
- ◆ Radial floating angle 360-degree, Floating angle (X, Y) $\pm 4^\circ$

Energy connector

Energy connector can provide energy connection between the main station and the slave station, and pass through energy media such as electrical power, air, fluid, communication, etc. The fixed station with a unique flexible mechanical device, which can compensate the position errors and mechanism errors during the docking process. The main application is for automotive manufacturing, to provide electrical power, air, signals to equipment or trolley during the quick docking of trolley, equipment and molds.



Provide energy connection between master station and slave station, including power, data, I/O and other media



Medium unit modular design, collocation more flexible



With X, Y, Z directional floating performance, eliminate docking error



Optional servo motor or cylinder drive

Model: LT-F31



- ◆ Realize quick connection of energy media such as pneumatic, electric current, communication, etc
- ◆ With 2×PT3/8 self-sealed pneumatic ports
- ◆ Optional driven way: servo motor or cylinder

Model: LT-F31C



- ◆ Realize quick connection of energy media such as pneumatic, liquid, electric current, communication, etc
- ◆ Optional 1~4 channels PT1/2 pneumatic port or water port
- ◆ Optional driven way: servo motor or cylinder

Model: LT-F41



- ◆ Realize quick connection of energy media such as electric current, communication, etc
- ◆ Compact design with light weight
- ◆ Optional driven way: servo motor or cylinder

LT Energy coupling device

The Energy coupling device is a collection of multiple connection types on a single frame or housing, and can be configured according to specific specifications. It can meet the multi-function and frequent plug requirements, integrated the power, signal, data, fiber, liquid and pneumatic, etc. Suitable for applications which need combine electrical, power and pneumatic connections together.



High stability
High reliability



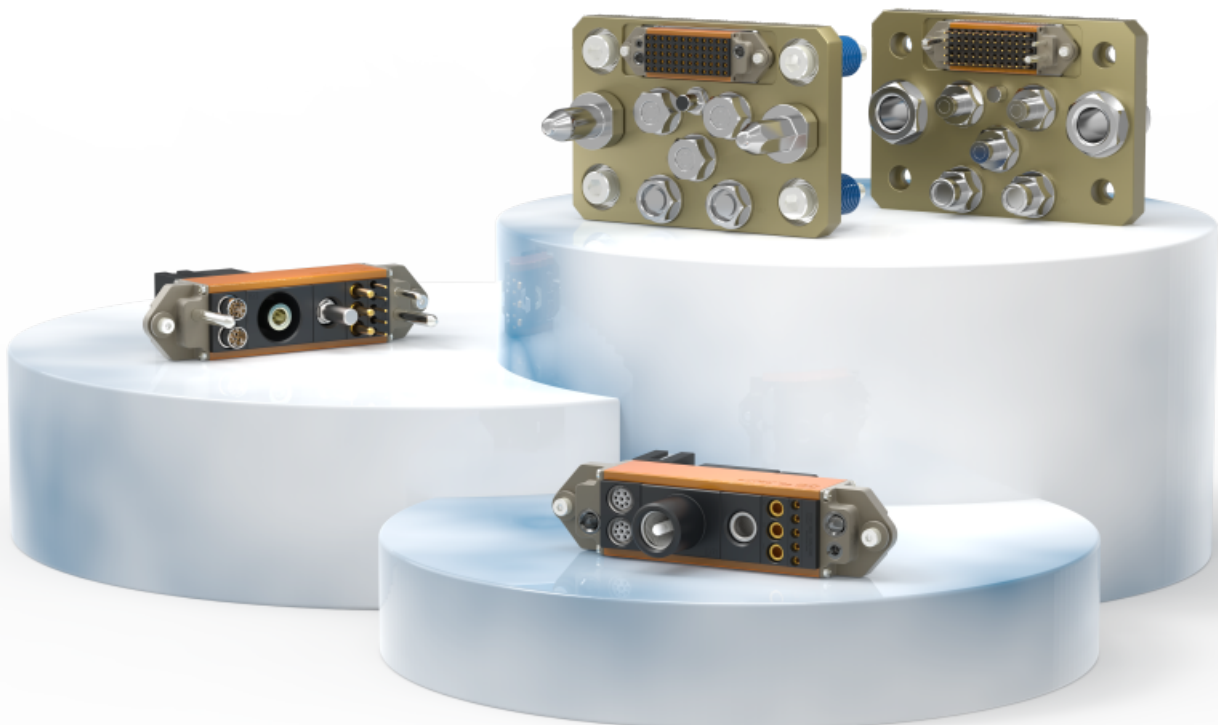
Ultra-high plug-life



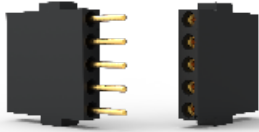
Strong current
carrying capacity



Strong resistance to
vibration
and impact

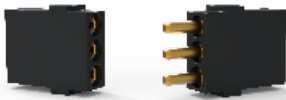


Φ1.6 Signal Module



- ◆ Mechanical parameters: Insertion force/N: 1 Pullout force/N: 0.5
Mechanical life/times: ≥100000 Jack type: Springtac TM
- ◆ Electrical parameters: Maximum continuous current/A: 13
Instantaneous current/A: 25 Contact resistance (max) /mΩ: 2.5
- ◆ Wire specification/mm²: 1.5
- ◆ Material/Coating: Copper alloy/gold plating
- ◆ Environmental protection requirements: RoHS2.0

Φ4 Power Module



- ◆ Mechanical parameters: Insertion force/N: 6 Pullout force/N: 3
Mechanical life/times: ≥100000 Jack type: Springtac TM
- ◆ Electrical parameters: Maximum continuous current/A: 25
Instantaneous current/A: 50 Contact resistance (max) /mΩ: 0.8
- ◆ Wire specification/mm²: 4
- ◆ Material/Coating: Copper alloy/gold plating
- ◆ Environmental protection requirements: RoHS2.0

Φ8 Power Module



- ◆ Mechanical parameters: Insertion force/N: 25 Pullout force/N: 15
Mechanical life/times: ≥100000 Jack type: Springtac TM
- ◆ Electrical parameters: Maximum continuous current/A: 105
Instantaneous current/A: 210 Contact resistance (max) /mΩ: 0.35
- ◆ Wire specification/mm²: 35
- ◆ Material/Coating: Copper alloy/gold plating
- ◆ Environmental protection requirements: RoHS2.0

Φ14 Power Module



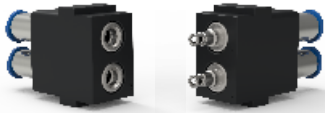
- ◆ Mechanical parameters: Insertion force/N: 40 Pullout force/N: 30
Mechanical life/times: ≥100000 Jack type: Springtac TM
- ◆ Electrical parameters: Maximum continuous current/A: 400
Instantaneous current/kA: 40 Contact resistance (max) /mΩ: 135
- ◆ Wire specification/mm²: 50/70
- ◆ Material/Coating: Copper alloy/gold plating
- ◆ Environmental protection requirements: RoHS2.0

1000Mbps Network Module



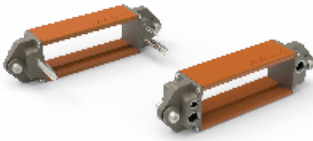
- ◆ Termination Methods: Welded plate
- ◆ Mechanical property: Mechanical life: 50000 times
Vibration and shock: GB/T 21563 Class I Level B requirements
- ◆ Electrical property: Rated voltage: 500V Rated current: 4A
Voltage resistance: 650V Contact resistance: ≤8mΩ
- ◆ Work temperature: -40 °C ~ 125 °C
- ◆ Network performance: 1000 Mbps
- ◆ Environmental protection requirements: RoHS 2.0

Φ3 Two-core pneumatic&liquid module



- ◆ Used for coupling compressed air and coolant
- ◆ Poles number: 2
- ◆ Support block material :POM
- ◆ (mbar) Min working pressure :14
- ◆ -15~90 (°C) Work temperature
- ◆ Sealing material NBR
- ◆ Pipe outer diameter (mm) : 6
- ◆ Diameter (mm) :3
- ◆ Max working pressure (bar) : 15
- ◆ Mechanical life ≥100000

LT-FEC Frame



- ◆ Frame float (FEC frame with Φ4 ground)
- ◆ X/Y direction: ±1mm
- ◆ Z direction: ±0.2mm
- ◆ Floating Angle: ±1°
- ◆ Positioning Repeatability: ±0.1mm
- ◆ Rail length (mm) : 48/72/96/144

Φ4 Ground Pin



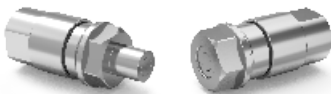
- ◆ Mechanical capacity: Insertion and extraction force/N: 4~8
Mechanical life/usage times: ≥100000
- ◆ Work Environment: Work temperature: -40°C~+125°C
- ◆ Material/Coating/Appearance:
Pinhole parts/terminals: Copper alloy Plated with silver
- ◆ Standard and certification:
Environmental requirement: RoHS 2.0

Water&Pneumatic Interface



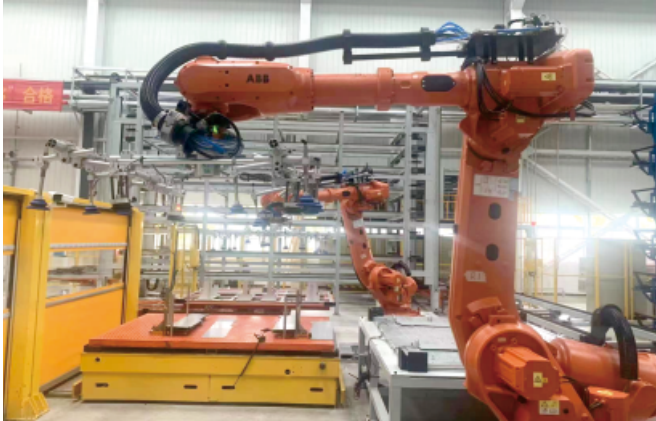
- ◆ Diamete (mm) : 8
- ◆ Max pressure (MPa) : 1.6
- ◆ Conntection force without pressure (N) : 150
- ◆ Repulsive cross-sectional area (cm²) : 4.35
- ◆ Service life (million times): 100

Hydraulic Interface



- ◆ Hydraulic interface: LTPH08、LTPH08B、LTPH12、LTPH12B
- ◆ Diameter (mm) : LTPH08、LTPH08B: 8; LTPH12、LTPH12B: 12
- ◆ Conntection force without pressure (N) : LTPH08、LTPH08B: 163; LTPH12、LTPH12B: 210
- ◆ Socket/Plug repulsive cross-sectional area (cm²) : LTPH08、LTPH08B: 2.14; LTPH12、LTPH12B: 4.52
- ◆ Flow (speed 5m/s) (l/min) : LTPH08、LTPH08B: 16.49; LTPH12、LTPH12B: 37.31
- ◆ Insertion and extraction service life(number): ≥100000
- ◆ Max pressure (MPa) : LTPH08: 16; LTPH08B: 25; LTPH12: 16; LTPH12B: 25

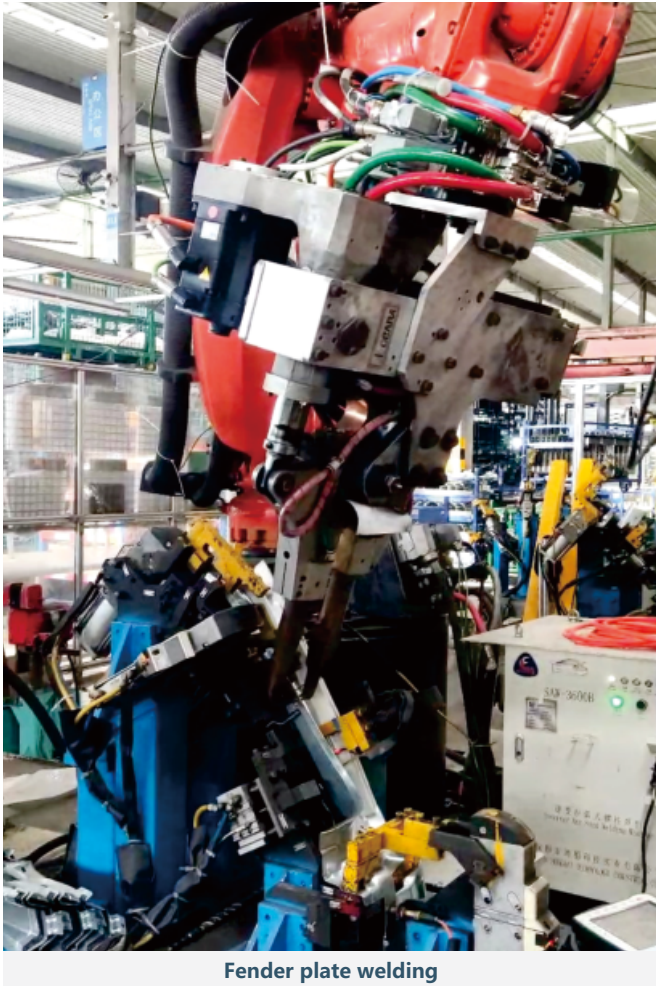
Industry Case



welding shop loading and unloading



Floor welding line



Fender plate welding

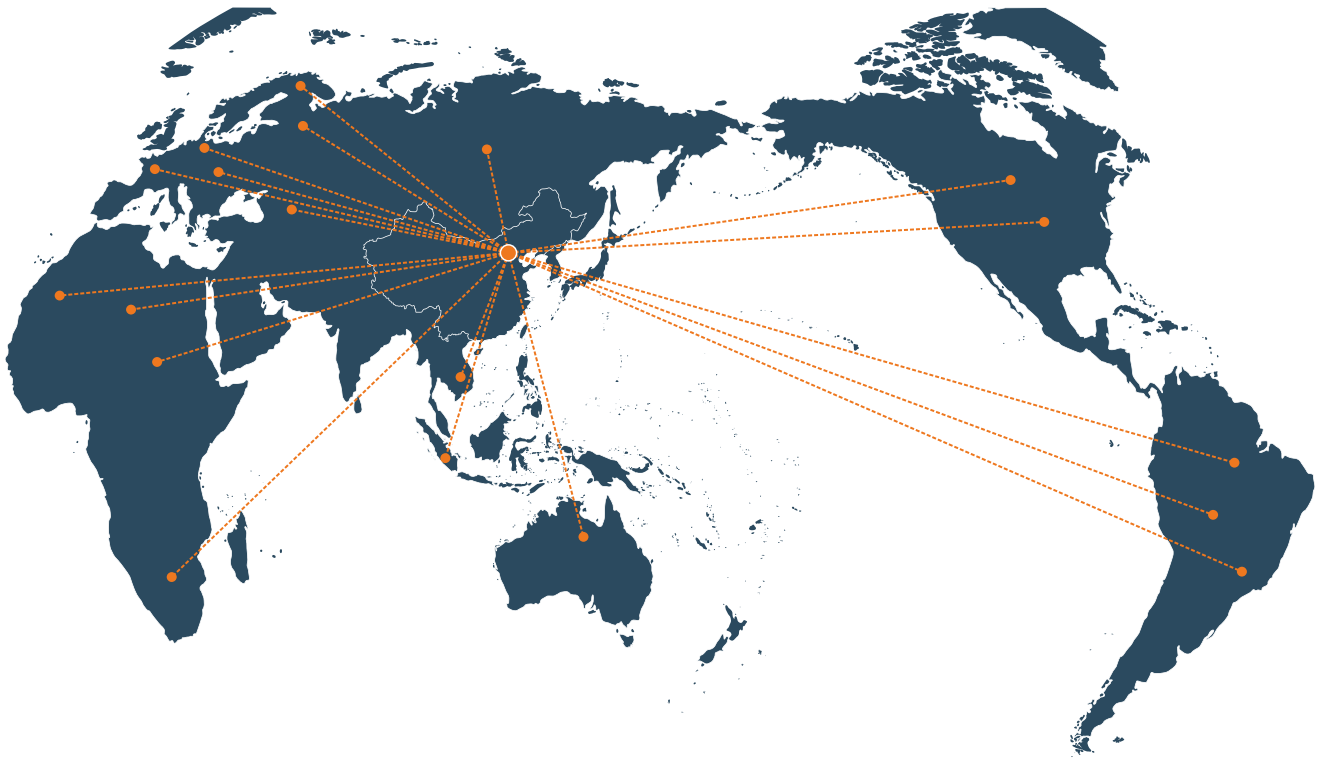


Body welding main line



TOX Application

Service Network



Address: No.11 Building, Zhengtuo Technology Innovation Park, Duqin Road, Mazhai industrial zone, Erqi District, Zhengzhou, China 450000

WhatsApp: +86 17335767268

E-Mail: info@ltautotools.com

Web: www.ltautotools.com





领航 · 机器人末端
End Of Arm Tools

Committed to becoming the world's best robot terminal equipment provider



Hot Line:

+86 17335767268
+86 15333867590

Website: www.ltautotools.com

Mail: info@ltautotools.com

Address: No.11 Building, Zhengtuo Technology Innovation Park, Duqin Road,
Mazhai industrial zone, Erqi District, Zhengzhou, China 450000