



# Series | Bellows vacuum cups SB

High-temperature Thermalon® bellows cups, 1.5 folds – SKT-B1

## High-temperature Thermalon® bellows cups, 1.5 folds – SKT-B1

UP TO 160 °C (320 °F) & MINIMUM MARKING



### Product notes

Bellows vacuum cups for uneven surfaces especially suited for removing hot plastic parts to be painted from an injection molding machine. Thermalon® is a material mixture specially optimized for the plastics industry with a hardness of 60° Shore A. Connection via plug-in nipple.

### Advantage

- > Extremely low-marking
- > Free of silicone and other paint-wetting-impairment substances (PWIS)
- > Bellows compensate differences in height and enable good adaptation to curved or uneven product surfaces

### Technical data

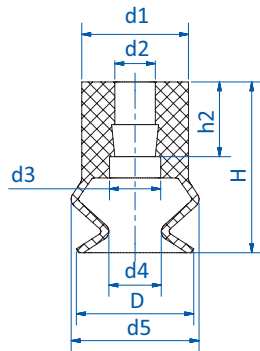
Item no.	Model		Number of folds	Material / Color	Short-term working temperature < 30 Sec [°C (°F)]
23.005.286.19	SKT-B1-5	2	1.5	Thermalon® (bl)	0 - 160 (32 - 320)
23.011.234.19	SKT-B1-11	5.5	1.5	Thermalon® (bl)	0 - 160 (32 - 320)
23.014.235.19	SKT-B1-14	5	1.5	Thermalon® (bl)	0 - 160 (32 - 320)
23.016.236.19	SKT-B1-16	8.5	1.5	Thermalon® (bl)	0 - 160 (32 - 320)
23.018.237.19	SKT-B1-18	5	1.5	Thermalon® (bl)	0 - 160 (32 - 320)
23.020.238.19	SKT-B1-20	5	1.5	Thermalon® (bl)	0 - 160 (32 - 320)
23.022.239.19	SKT-B1-22	8	1.5	Thermalon® (bl)	0 - 160 (32 - 320)
23.025.240.19	SKT-B1-25	12	1.5	Thermalon® (bl)	0 - 160 (32 - 320)
23.033.241.19	SKT-B1-33	11	1.5	Thermalon® (bl)	0 - 160 (32 - 320)
23.043.242.19	SKT-B1-43	12.5	1.5	Thermalon® (bl)	0 - 160 (32 - 320)
23.053.243.19	SKT-B1-53	15	1.5	Thermalon® (bl)	0 - 160 (32 - 320)
23.063.244.19	SKT-B1-63	15	1.5	Thermalon® (bl)	0 - 160 (32 - 320)



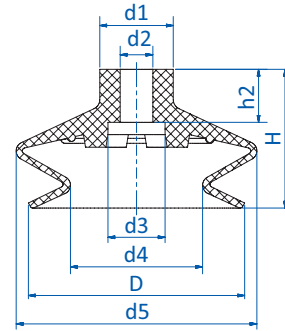
### Accessories

Item no.	Suitable fittings						
	M5-male	M5-female	M6-male	G1/8-male	G1/8-female	G1/4-male	G1/4-female
23.005.286.19	270.772	--	--	--	--	--	--
23.011.234.19	270.772	270.347	270.104	270.033	270.478	--	--
23.014.235.19	270.772	270.347	270.104	270.033	270.478	--	--
23.016.236.19	270.772	270.347	270.104	270.033	270.478	--	--
23.018.237.19	270.772	270.347	270.104	270.033	270.478	--	--
23.020.238.19	270.772	270.347	270.104	270.033	270.478	--	--
23.022.239.19	270.772	270.347	270.104	270.033	270.478	--	--
23.025.240.19	270.772	270.347	270.104	270.033	270.478	--	--
23.033.241.19	--	--	270.315	270.196	270.114	270.190	270.192
23.043.242.19	--	--	270.315	270.196	270.114	270.190	270.192
23.053.243.19	--	--	270.315	270.196	270.114	270.190	270.192
23.063.244.19	--	--	270.315	270.196	270.114	270.190	270.192

### Dimensions



Drawing A



Drawing B

Item no.	Drawing	Ø D [mm]	Ø d1 [mm]	Ø d2 [mm]	Ø d3 [mm]	Ø d4 [mm]	Ø d5 [mm]	H [mm]	h2 [mm]
23.005.286.19	A	5.5	7	3.8	--	2.5	6	11	7
23.011.234.19	A	11	10	3.8	4.8	4.9	12	16	7
23.014.235.19	A	14	10	3.8	4.8	4.8	14	16	7
23.016.236.19	A	16	10	3.8	4.8	8.2	17.5	19	7
23.018.237.19	A	18	10	3.8	4.8	7.8	18	16.5	7
23.020.238.19	A	19	10	3.8	4.8	10.6	20	16	7
23.022.239.19	A	22	10	3.8	4.8	11.4	24	19	7
23.025.240.19	A	24	10	3.8	4.8	9.2	25	23	7
23.033.241.19	B	33	18	8	16	17	36	27.5	13
23.043.242.19	B	43	18	8	14	22.5	46	28	13
23.053.243.19	B	53	18	8	14	32.4	59	34	13
23.063.244.19	B	63	18	8	14	42.5	67	34	13