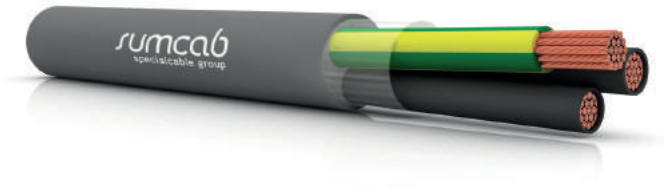


Sumflex® CP 2100

Power & control

Application: Power and control cable, extra flexible with PVC sheath, for use in cable chains with movement speed of up to 200 m/min. Flame retardant cable.



Design

Conductor	Fine threads of bare copper, extra flexible, Class 6 according to EN 60228
Insulation	PVC
Identification	Black with white numbers, conductor yw/grn (G)
Cabling	In concentric layers with optimum feed-through cabling
Exterior sheath	PVC, grey colour RAL 7001

Technical Details

Service voltage	300/500V
Test voltage	2.500V
Minimum bend radius	7.5 x outer diameter
Service temperature	-5°C to +80°C
Max. movement speed	200m/min.
Max. acceleration/ deceleration	15 m/s ²
Max. horizontal movement	distance 10 m
Number of cycles:	Min. 1 mio. / Max. 10 mio. Depending on the exact application. For more information, contact your Sumcab technical sales manager.

General features

IEC 60332-1-2	Flame retardant
IEC 60811-2-1	Resistance to oils and industrial greases

Application markets

Tool Machine
Automation
Packaging
Food & Beverage
Chemical Industry
Pharmaceutical Industry
Glass and Ceramics Industry
Electronics Industry
Aeronautical Industry
Transport & Logistics

Power & control

N° of conductors x mm ²	Outer diameter in mm	Weight kg/km
2x0,5	5,3	35
3G0,5	5,5	42,9
4G0,5	6	53,2
5G0,5	6,7	65,3
7G0,50	7,7	82,7
12G0,50	9,1	126,5
18G0,50	10,7	184,1
25G0,50	12,7	241,7
34G0,50	14,3	324,5
36G0,50	14,3	338,2
2x0,75	5,7	42,7
3G0,75	6,0	54
4G0,75	6,7	69,5
5G0,75	7,2	81,5
7G0,75	8,3	105,7
12G0,75	10,1	170,8
18G0,75	11,7	240,1
25G0,75	14,0	324,9
34G0,75	15,9	435,3
36G0,75	15,9	455,8
2x1	6,0	51,3
3G1	6,5	68
4G1	7,0	85,1
5G1	7,6	100,6
7G1	8,8	130
12G1	10,8	212,3

Sumcab reserves the right to modify these specifications with no prior notice.

Sumflex® CP 2100

N° of conductors x mm ²	Outer diameter in mm	Weight kg/km
18G1	12,7	306,2
25G1	15,2	409,7
34G1	17,10	548,3
36G1	17,10	574
2x1,5	6,8	65,7
3G1,5	7,1	85,3
4G1,5	7,7	106
5G1,5	8,4	127,6
7G1,5	10,0	167,5
12G1,5	12,0	275,5
18G1,5	14,1	402,9
25G1,5	17,1	549,8
34G1,5	19,3	736,2
36G1,5	19,3	772,3
2x2,5	8,1	91,8
3G2,5	8,6	122,1
4G2,5	9,6	153,8
5G2,5	10,4	193,1
7G2,5	12,3	254
12G2,5	15,1	420,8
18G2,5	17,8	615
25G2,5	22,0	842,4
2x4	9,8	135,2
3G4	10,4	188,4
4G4	11,4	238,7
5G4	12,6	289,3

Power & control

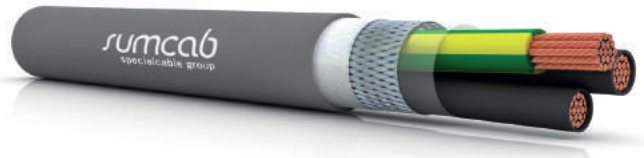
N° of conductors x mm ²	Outer diameter in mm	Weight kg/km
7G4	14,9	394,6
2x6	11,3	186,8
3G6	12,0	424,5
4G6	13,4	519,2
5G6	14,7	639,2
6G6	16,2	732,3
7G6	17,6	799,2
2x10	14,5	320,5
3G10	15,6	443,2
4G10	17,2	578,3
5G10	19,1	702,9
6G10	21,3	868,3
7G10	23,2	983,4
3G16	18,2	635,5
4G16	20,7	835,6
5G16	22,8	1047,2
3G25	22,7	1212,1
4G25	25,0	1312,8
5G25	27,8	1617,8
3G35	25,5	1320,4

Sumcab reserves the right to modify these specifications with no prior notice.

Sumflex® CP 2100C

Power & control

Application: Shielded power and control cable, extra flexible with PVC sheath, for use in cable chains with movement speed of up to 200 m/min. Flame retardant cable.



Design

Conductor	Fine threads of bare copper, extra flexible, Class 6 according to EN 60228
Insulation	PVC
Identification	Black with white numbers, conductor yw/grn (G)
Cabling	In concentric layers with optimum feed-through cabling
Shielding	Tinned copper braid
Exterior sheath	PVC, grey colour RAL 7001

Technical Details

Service voltage	300/500V
Test voltage	2.500V
Minimum bend radius	10 x outer diameter
Service temperature	-5°C to +80°C
Max. movement speed	200m/min.
Max. acceleration/ deceleration	15 m/s²
Max. horizontal movement	distance 10 m
Number of cycles:	Min. 1 mio. / Max. 10 mio. Depending on the exact application. For more information, contact your Sumcab technical sales manager.

General features

IEC 60332-1-2	Flame retardant
IEC 60811-2-1	Resistance to oils and industrial greases

Application markets

Tool Machine
Automation
Packaging
Food & Beverage
Chemical Industry
Pharmaceutical Industry
Glass and Ceramics Industry
Electronics Industry
Aeronautical Industry
Transport & Logistics

Power & control

N° of conductors x mm ²	Outer diameter in mm	Weight kg/km
2x0,5	5,8	51,5
3G0,5	6	60,7
4G0,5	6,4	71
5G0,5	7,1	85,8
7G0,50	8,3	109,6
12G0,50	9,7	172,9
18G0,50	11,4	236,7
25G0,50	13,6	307,5
34G0,50	15,0	396
36G0,50	15,0	410,7
2x0,75	6,2	60,7
3G0,75	6,4	71,9
4G0,75	7,1	90
5G0,75	7,8	104,4
7G0,75	9,0	149,6
12G0,75	10,8	220,5
18G0,75	12,4	299,1
25G0,75	14,4	398,1
34G0,75	16,6	516,1
36G0,75	16,6	535,6
2x1	6,6	69,8
3G1	7,2	88,9
4G1	7,9	105,8
5G1	8,5	123,8
7G1	9,6	175,3
12G1	11,9	264,9

Sumcab reserves the right to modify these specifications with no prior notice.

Sumflex® CP 2100C

N° of conductors x mm ²	Outer diameter in mm	Weight kg/km
18G1	13,9	366,4
25G1	16,6	481,9
34G1	18,4	628,4
36G1	18,4	653,7
2x1,5	7,3	88
3G1,5	7,8	109
4G1,5	8,4	132,3
5G1,5	9,1	171
7G1,5	10,7	227,7
12G1,5	12,7	338,7
18G1,5	15,1	477,7
25G1,5	18,0	639,8
34G1,5	20,2	873,6
36G1,5	20,2	909,8
2x2,5	8,6	118,3
3G2,5	9,1	164,2
4G2,5	10,3	200
5G2,5	11,1	242,7
7G2,5	13,0	318,7
12G2,5	16,0	496,8
18G2,5	18,8	706,3
25G2,5	22,9	985,4
2x4	10,5	180,7
3G4	11,1	237
4G4	12,1	295,5
5G4	13,4	352,5

Power & control

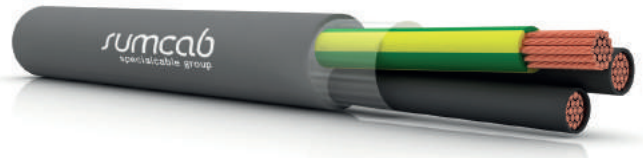
N° of conductors x mm ²	Outer diameter in mm	Weight kg/km
7G4	15,7	474,2
2x6	12,0	241,9
3G6	12,7	314,8
4G6	14,3	391,4
5G6	15,6	478,8
7G6	18,5	649,4
2x10	15,4	384,5
3G10	16,5	508,1
4G10	18,1	648,9
5G10	20,0	819,1
7G10	23,9	1131,8
3G16	19,1	732
4G16	21,6	975,9
5G16	23,5	1199,2
3G25	23,4	1198,4
4G25	25,9	1572
5G25	28,7	1095
3G35	26,4	1537,6
4G35	29,3	1963,5
5G35	33,1	2463,2

Sumcab reserves the right to modify these specifications with no prior notice.

Sumodrive® 510

Power & control

Application: Power and control cable, extra flexible with Thermoplastic polymer insulation and PUR sheath, for use in cable chains with movement speed of up to 250 m/min. UL & CSA certified. Halogen free and flame retardant cable.



Design

Conductor	Fine threads of bare copper, extra flexible, Class 6 according to EN 60228
Insulation	Thermoplastic polymer
Identification	Black with white numbers, conductor yw/grn
Cabling	In concentric layers with optimum feed-through cabling
Exterior sheath	PUR, grey colour RAL 7001

Technical Details

Service voltage	600V
Test voltage	4000V
Minimum bend radius	7.5 x outer diameter
Service temperature	-25°C to +80°C
Max. movement speed	250 m/min.
Max. acceleration/ deceleration	30 m/s ²
Max. horizontal movement	distance 25 m
Number of cycles:	Min. 1 mio. / Max. 10 mio. Depending on the exact application. For more information, contact your Sumcab technical sales manager.

General features

UL & CSA	Certification for USA and Canada
UL FT2	Flame retardant
HD 22.10	Resistance to oils and industrial greases
EN 60754-1	Halogen free
Other features	Good resistance to acids, alkaline solutions, solvents, hydraulic liquids, etc.
	Resistant to abrasion and cuts
	Outer sheath with low-adherence surface
	Excellent resistance to moisture

Application markets

Tool Machine
Automation
Packaging
Food & Beverage
Chemical Industry
Pharmaceutical Industry
Glass and Ceramics Industry
Electronics Industry
Aeronautical Industry
Transport & Logistics



Power & control

Code	N° of conductors x mm ²	Outer diameter in mm	Weight kg/km
155600020160100	2x0,50	5,6	35,6
155600030160100	3G0,50	5,8	42,7
155600040160100	4G0,50	6,2	51
155600050160100	5G0,50	6,7	59,4
155600070160100	7G0,50	7,6	73,4
155600120160100	12G0,50	8,9	111,9
155600180160100	18G0,50	10,3	159,4
155600250160100	25G0,50	12,2	209
155600340160100	34G0,50	13,7	277,5
155600360160100	36G0,50	13,7	288,8
155600020180100	2x0,75	6,2	44,8
155600030180100	3G0,75	6,5	55,3
155600040180100	4G0,75	6,9	65,4
155600050180100	5G0,75	7,5	78,1
155600070180100	7G0,75	8,6	98,5
155600120180100	12G0,75	10,3	158,7
155600180180100	18G0,75	11,8	219,5
155600250180100	25G0,75	14,2	296,9
155600360180100	36G0,75	15,8	405,7
155600020190100	2x1	6,6	52,4
155600030190100	3G1	6,9	64,9
155600040190100	4G1	7,4	79,2
155600050190100	5G1	8	93,5
155600070190100	7G1	9,2	120,4
155600120190100	12G1	11,1	194,6
155600180190100	18G1	13	277,8

Sumcab reserves the right to modify these specifications with no prior notice.

Sumodrive® 510

Code	N° of conductors x mm ²	Outer diameter in mm	Weight kg/km
155600250190100	25G1	15,5	370,1
155600340190100	34G1	17,4	493,1
155600360190100	36G1	17,4	515,7
155600020200100	2x1,5	7,3	66,4
155600030200100	3G1,5	7,7	86,5
155600040200100	4G1,5	8,3	106,1
155600050200100	5G1,5	8,9	124,8
155600070200100	7G1,5	10,3	164,3
155600120200100	12G1,5	12,6	268,5
155600180200100	18G1,5	14,5	388,1
155600250200100	25G1,5	17,5	525,4
155600340200100	34G1,5	19,9	703,1
155600360200100	36G1,5	19,9	737
155600020220100	2x2,5	8,7	92,1
155600030220100	3G2,5	9,2	121
155600040220100	4G2,5	10,2	153,2
155600050220100	5G2,5	11,1	188,5
155600070220100	7G2,5	13,2	248,7
155600120220100	12G2,5	16,1	407,2
155600180220100	18G2,5	18,7	594,6
155600250220100	25G2,5	22,8	809,6
155600340220100	34G2,5	25,7	1085,5
155600360220100	36G2,5	25,7	1139,6
155600030230100	3G4	10,5	177,6
155600040230100	4G4	11,4	225,1
155600050230100	5G4	12,4	270,9



Power & control

Code	N° of conductors x mm ²	Outer diameter in mm	Weight kg/km
155600060230100	6G4	13,7	327,4
155600070230100	7G4	14,8	369,2
155600030240100	3G6	12,4	421,8
155600040240100	4G6	13,8	504,9
155600050240100	5G6	15,1	621,1
155600060240100	6G6	16,6	714,1
155600070240100	7G6	18	777
155600030250100	3G10	15,6	409,5
155600040250100	4G10	17,3	532,3
155600050250100	5G10	19,3	650,8
155600060250100	6G10	21	776,9
155600070250100	7G10	23	882
155600030260100	3G16	18,2	599,7
155600040260100	4G16	20,2	776,7
155600050260100	5G16	22,4	963,1

Sumcab reserves the right to modify these specifications with no prior notice.