

Sumodrive® 410

Signal & data transmission

Application: Signal cable, extra flexible with thermoplastic polymer insulation and PUR sheath, for use in cable chains with movement speed of up to 250 m/min. UL & CSA certified. Halogen free and flame retardant cable.



Design

Conductor	Fine threads of bare copper, extra flexible, Class 6 according to EN 60228
Insulation	Thermoplastic polymer
Identification	DIN 47100 (colours)
Cabling	In concentric layers with optimum feed-through cabling
Exterior sheath	PUR, grey colour RAL 7001

Technical Details

Service voltage	600V
Test voltage	4000V
Minimum bend radius	7,5 x outer diameter
Service temperature	-5°C to +80°C
Max. movement speed	250 m/min.
Max. acceleration/ deceleration	30 m/s ²
Max. horizontal movement	max. 25m
Number of cycles:	Min. 1 mio. / Max. 10 mio. Depending on the exact application. For more information, contact your Sumcab technical sales manager.

General features

UL & CSA	Certification for USA and Canada
UL FT2	Flame retardant
HD 22.10	Resistance to oils and industrial greases
EN 60754-1	Halogen free
Other features	Good resistance to acids, alkaline solutions, solvents, hydraulic liquids, etc.
	Resistant to abrasion and cuts
	Outer sheath with low-adherence surface
	Excellent resistance to moisture

Application markets

Tool Machine
Automation
Packaging
Food & Beverage
Chemical Industry
Pharmaceutical Industry
Glass and Ceramics Industry
Electronics Industry
Aeronautical Industry
Transport & Logistics



Signal & data transmission

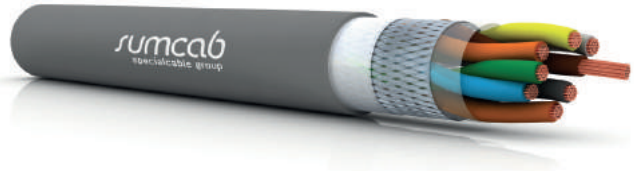
Code	N° of conductor x mm ²	Outer diameter in mm	Weight kg/km
155000020120100	2x0,25	4,2	19,7
155000030120100	3x0,25	4,4	23,4
155000040120100	4x0,25	4,7	27,4
155000050120100	5x0,25	5	31,1
155000070120100	7x0,25	5,7	40,5
155000120120100	12x0,25	7,0	61,9
155000180120100	18x0,25	8	84,4
155000250120100	25x0,25	9,4	109,9
155000020130100	2x0,34	4,4	22,5
155000030130100	3x0,34	4,6	27,2
155000040130100	4x0,34	4,9	33
155000050130100	5x0,34	5,3	37,6
155000070130100	7x0,34	6,1	48,8
155000120130100	12x0,34	7,4	76,3
155000180130100	18x0,34	8,5	103,7
155000250130100	25x0,34	10,2	140,9
155000020160100	2x0,50	5,6	35,6
155000030160100	3x0,50	5,8	42,7
155000040160100	4x0,50	6,2	51
155000050160100	5x0,50	6,7	59,4
155000070160100	7x0,50	7,6	73,4
155000120160100	12x0,50	8,9	111,9
155000180160100	18x0,50	10,3	159,4
155000250160100	25x0,50	12,2	209
155000340160100	34x0,50	13,7	277,5
155000360160100	36x0,50	13,7	288,8

Sumcab reserves the right to modify these specifications with no prior notice.

Sumodrive® 410C

Signal & data transmission

Application: Shielded signal cable, extra flexible with thermoplastic polymer insulation and PUR sheath, for use in cable chains with movement speed of up to 250 m/min. UL & CSA certified. Halogen free and flame retardant cable.



Design

Conductor	Fine threads of bare copper, extra flexible, Class 6 according to EN 60228
Insulation	Thermoplastic polymer
Identification	DIN 47100 (colours)
Cabling	In concentric layers with optimum feed-through cabling
Shielding	Tinned copper braid
Exterior sheath	PUR, grey colour RAL 7001

Technical Details

Service voltage	250V
Test voltage	2500V
Minimum bend radius	7.5 x outer diameter
Service temperature	-5°C to +80°C
Max. movement speed	250 m/min.
Max. acceleration/ deceleration	30 m/s ²
Max. horizontal movement	max. 25m
Number of cycles:	Min. 1 mio. / Max. 10 mio. Depending on the exact application. For more information, contact your Sumcab technical sales manager.

General features

UL & CSA	Certification for USA and Canada
UL FT2	Flame retardant
HD 22.10	Resistance to oils and industrial greases
EN 60754-1	Halogen free
Other features	Good resistance to acids, alkaline solutions, solvents, hydraulic liquids, etc.
	Resistant to abrasion and cuts
	Outer sheath with low-adherence surface
	Excellent resistance to moisture

Application markets

Tool Machine
Automation
Packaging
Food & Beverage
Chemical Industry
Pharmaceutical Industry
Glass and Ceramics Industry
Electronics Industry
Aeronautical Industry
Transport & Logistics



Signal & data transmission

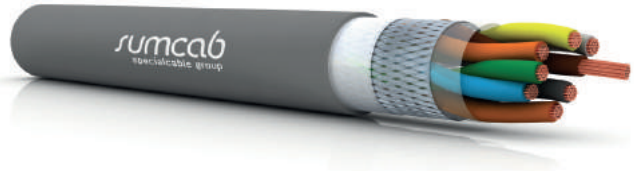
Code	No. of conductors x mm ²	Outer diameter in mm	Weight kg/km
155100020120100	2x0,25	4,6	30,4
155100030120100	3x0,25	4,8	35,2
155100040120100	4x0,25	5,1	40,4
155100050120100	5x0,25	5,5	46,5
155100070120100	7x0,25	6,2	56,4
155100120120100	12x0,25	7,5	81,7
155100180120100	18x0,25	8,5	108,6
155100250120100	25x0,25	10	151,1
155100020130100	2x0,34	4,9	35,4
155100030130100	3x0,34	5,1	39,2
155100040130100	4x0,34	5,5	46,3
155100050130100	5x0,34	5,8	53,3
155100070130100	7x0,34	6,6	66
155100120130100	12x0,34	7,9	97,5
155100180130100	18x0,34	9	144,2
155100250130100	25x0,34	10,8	188,4
155100020160100	2x0,50	6,1	50,7
155100030160100	3x0,50	6,3	59
155100040160100	4x0,50	6,7	68,8
155100050160100	5x0,50	7,1	78,2
155100070160100	7x0,50	8,2	98
155100120160100	12x0,50	9,6	154,3
155100180160100	18x0,50	11,1	208,9
155100250160100	25x0,50	12,9	267,8
155100340160100	34x0,50	14,6	344,8
155100360160100	36x0,50	14,6	356,1

Sumcab reserves the right to modify these specifications with no prior notice.

Sumodrive® 412C

Signal & data transmission

Application: Shielded and twisted in pairs signal cable, extra flexible with thermoplastic polymer insulation and PUR sheath, for use in cable chains with movement speed of up to 250 m/min. UL & CSA certified. Halogen free and flame retardant cable.



Design

Conductor	Fine threads of bare copper, extra flexible, Class 6 according to EN 60228
Insulation	Thermoplastic polymer
Identification	DIN 47100 (colours)
Cabling	Braiding in pairs
Shielding	Tinned copper braid
Exterior sheath	PUR, grey colour RAL 7001

Technical Details

Service voltage	250V
Test voltage	2500V
Minimum bend radius	7,5 x outer diameter
Service temperature	-5°C to +80°C
Max. movement speed	250 m/min.
Max. acceleration/ deceleration	30 m/s ²
Max. horizontal movement	max. 25m
Number of cycles:	Min. 1 mio. / Max. 10 mio. Depending on the exact application. For more information, contact your Sumcab technical sales manager.

General features

UL & CSA	Certification for USA and Canada
UL FT2	Flame retardant
HD 22.10	Resistance to oils and industrial greases
EN 60754-1	Halogen free
Other features	Good resistance to acids, alkaline solutions, solvents, hydraulic liquids, etc.
	Resistant to abrasion and cuts
	Outer sheath with low-adherence surface
	Excellent resistance to moisture

Application markets

Tool Machine
Automation
Packaging
Food & Beverage
Chemical Industry
Pharmaceutical Industry
Glass and Ceramics Industry
Electronics Industry
Aeronautical Industry
Transport & Logistics



Signal & data transmission

Code	N° of conductors x mm ²	Outer diameter in mm	Weight kg/km
155220010060100	1x2x0,14	4,4	23,8
155220020060100	2x2x0,14	5,3	34,2
155220030060100	3x2x0,14	5,9	41,6
155220040060100	4x2x0,14	6,3	48,1
155220050060100	5x2x0,14	6,7	53,9
155220060060100	6x2x0,14	7,4	63,6
155220070060100	7x2x0,14	7,8	70,2
155220120060100	12x2x0,14	9,4	111
155220180060100	18x2x0,14	10,4	141,2
155220250060100	25x2x0,14	11,7	177,7
155220010120100	1x2x0,25	4,6	27,6
155220020120100	2x2x0,25	5,7	41,2
155220030120100	3x2x0,25	6,3	51,3
155220040120100	4x2x0,25	7	63,1
155220050120100	5x2x0,25	7,5	71,9
155220060120100	6x2x0,25	8,1	83
155220070120100	7x2x0,25	8,5	91,3
155220120120100	12x2x0,25	10,5	149,7
155220180120100	18x2x0,25	11,4	191,5
155220250120100	25x2x0,25	12,9	245,2
155220010130100	1x2x0,34	4,9	32,3
155220020130100	2x2x0,34	6,1	48,5
155220030130100	3x2x0,34	7	62,8
155220040130100	4x2x0,34	7,5	74,1
155220050130100	5x2x0,34	8,1	85,8
155220060130100	6x2x0,34	8,9	110,7
155220070130100	7x2x0,34	9,3	121,7
155220120130100	12x2x0,34	11,3	178,8
155220180130100	18x2x0,34	12,4	234,9
155220250130100	25x2x0,34	14,2	307

Sumcab reserves the right to modify these specifications with no prior notice.